

# Wall Panel Schematics

Cellulose - R16 - 2x6 - 1/2" Plywood

ReCover Initiative

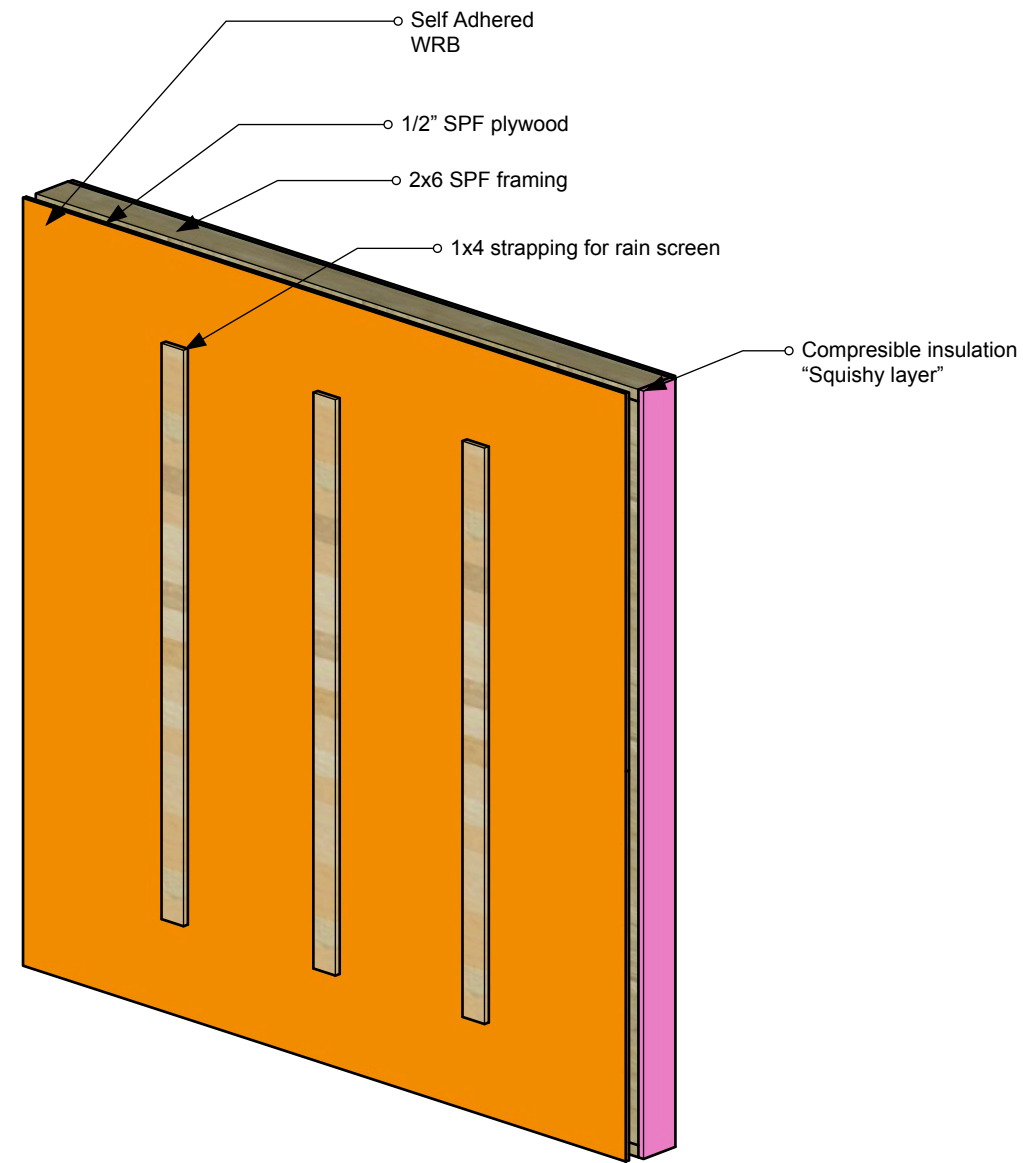


Version Date  
February 27, 2023

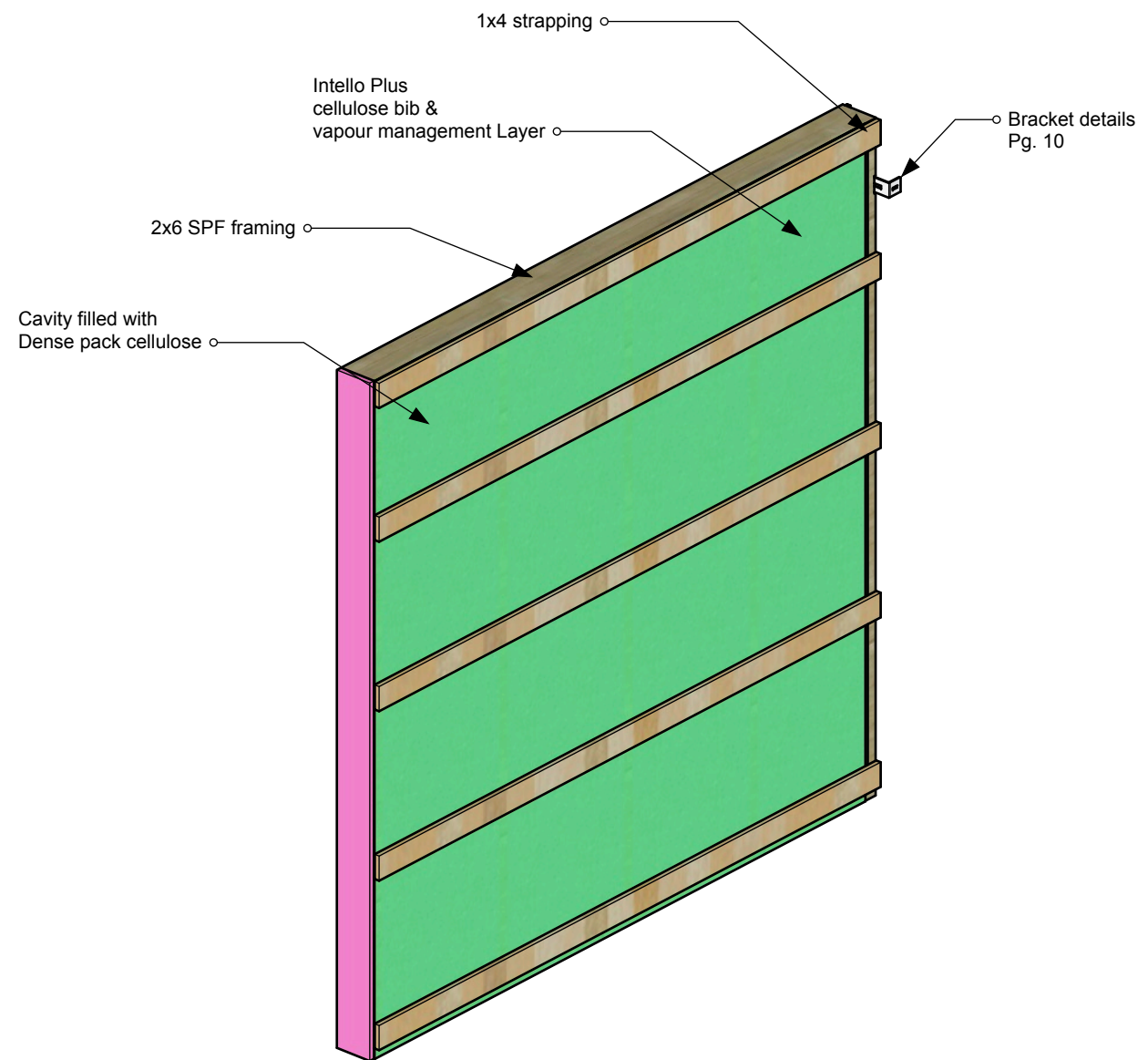
PROJECT  
2x6 R 16 Cellulose  
Panel Schematics

Drawn By  
Nick Rudnicki

# Basic Panel - Overview

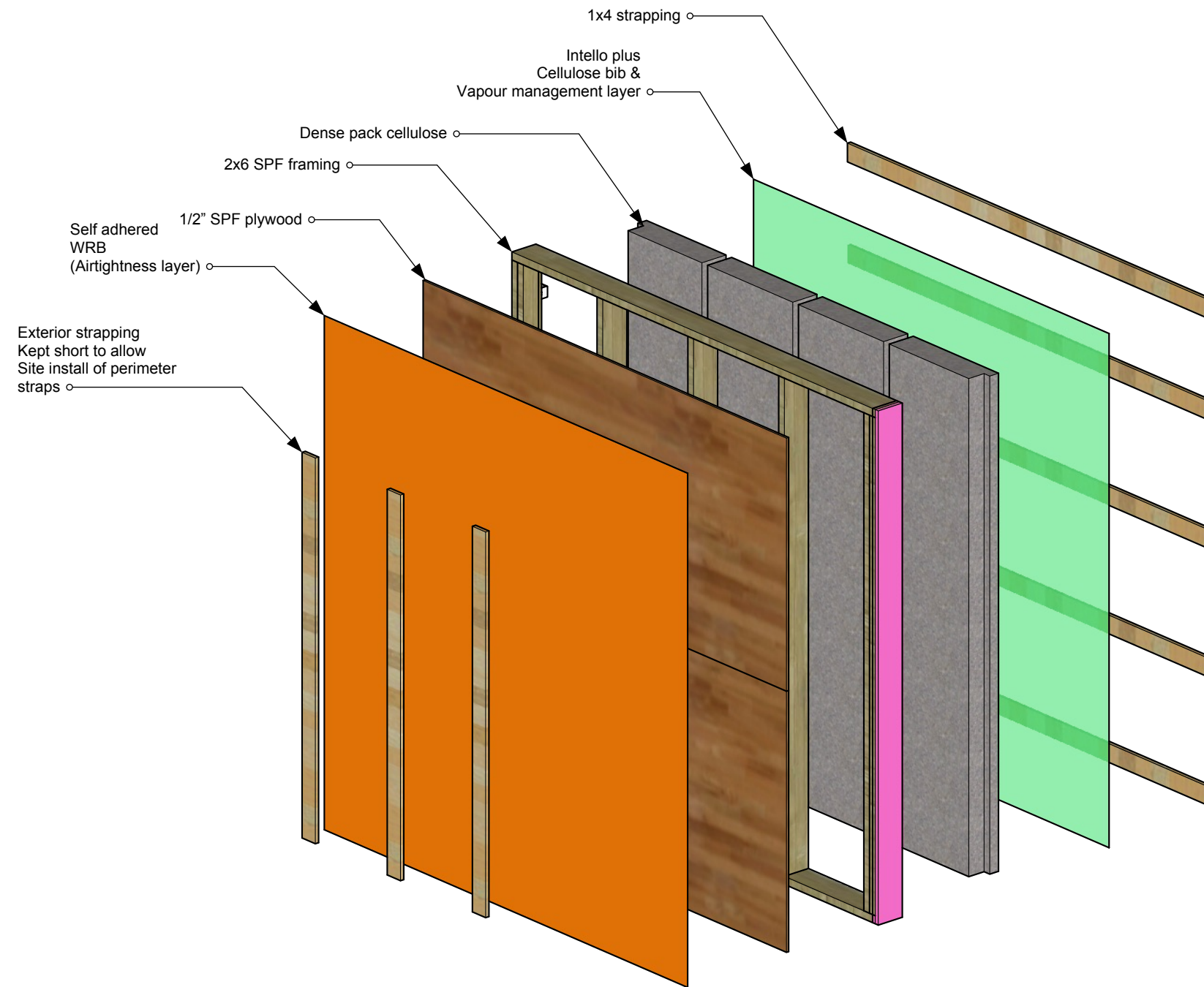


EXTERIOR VIEW

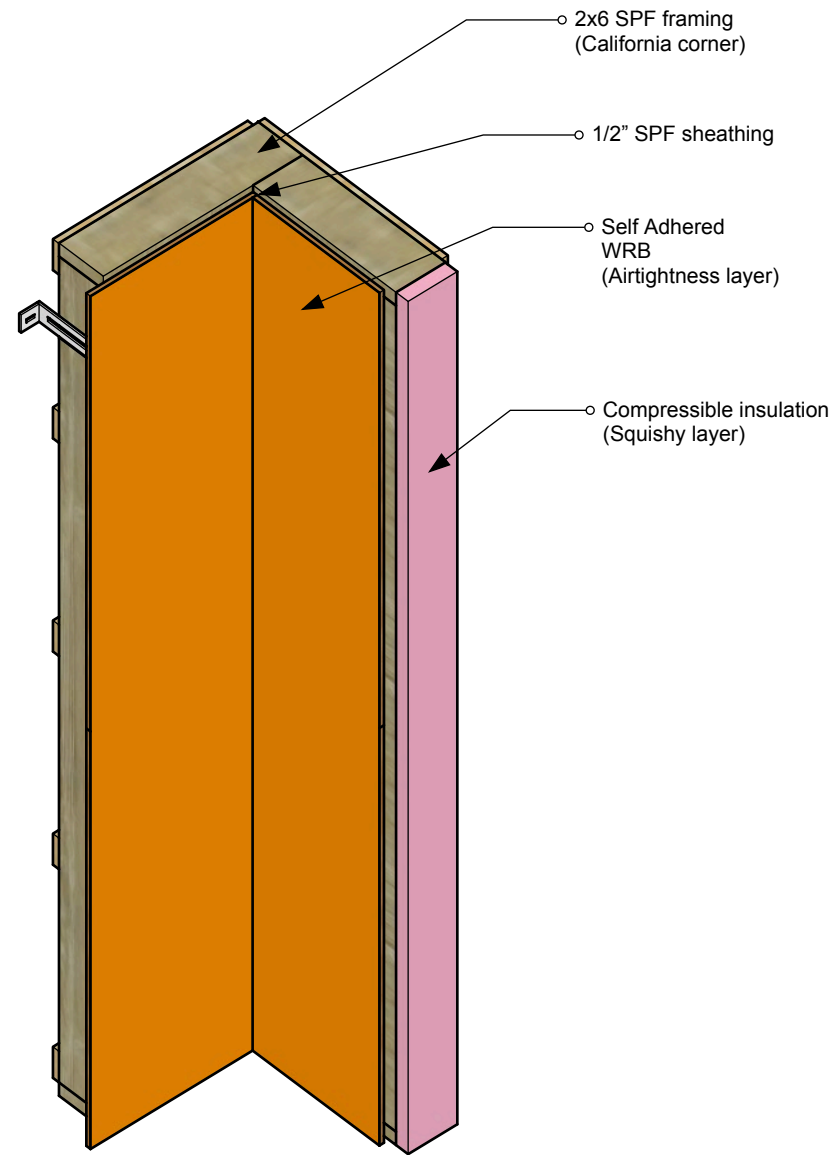


INTERIOR VIEW

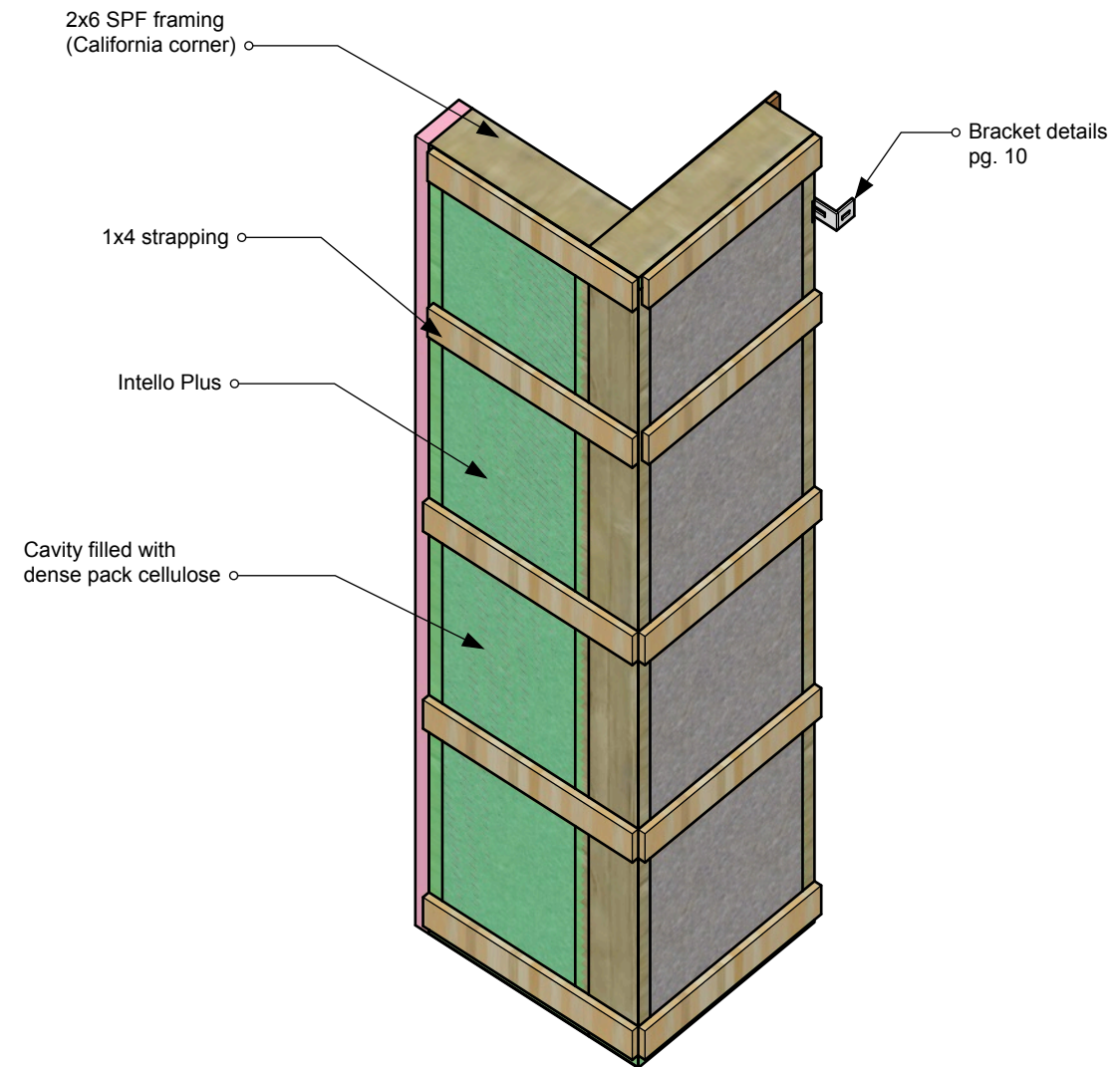
# Basic Panel - Exploded View



# Inside Corner Panel - Overview

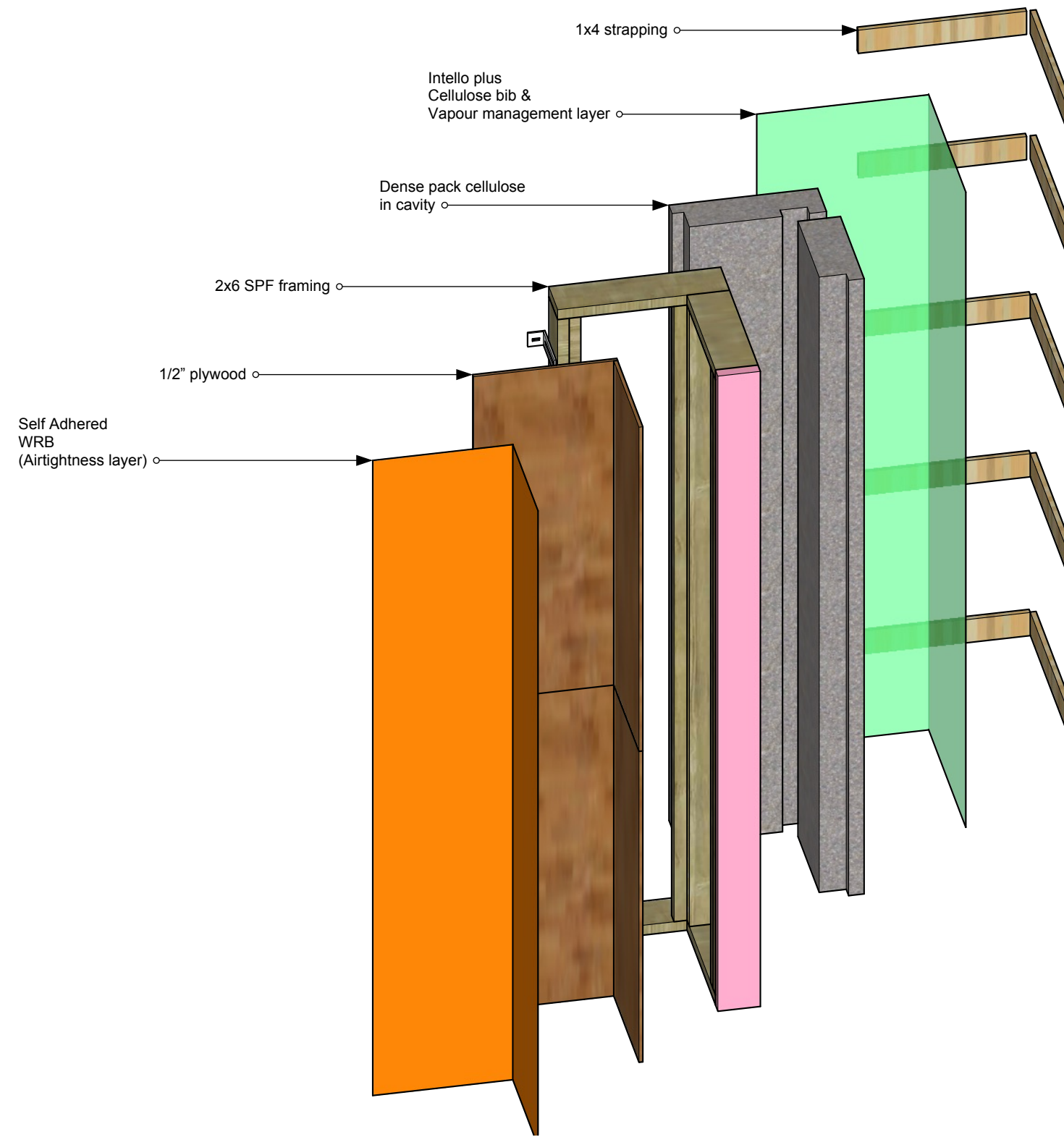


EXTERIOR VIEW

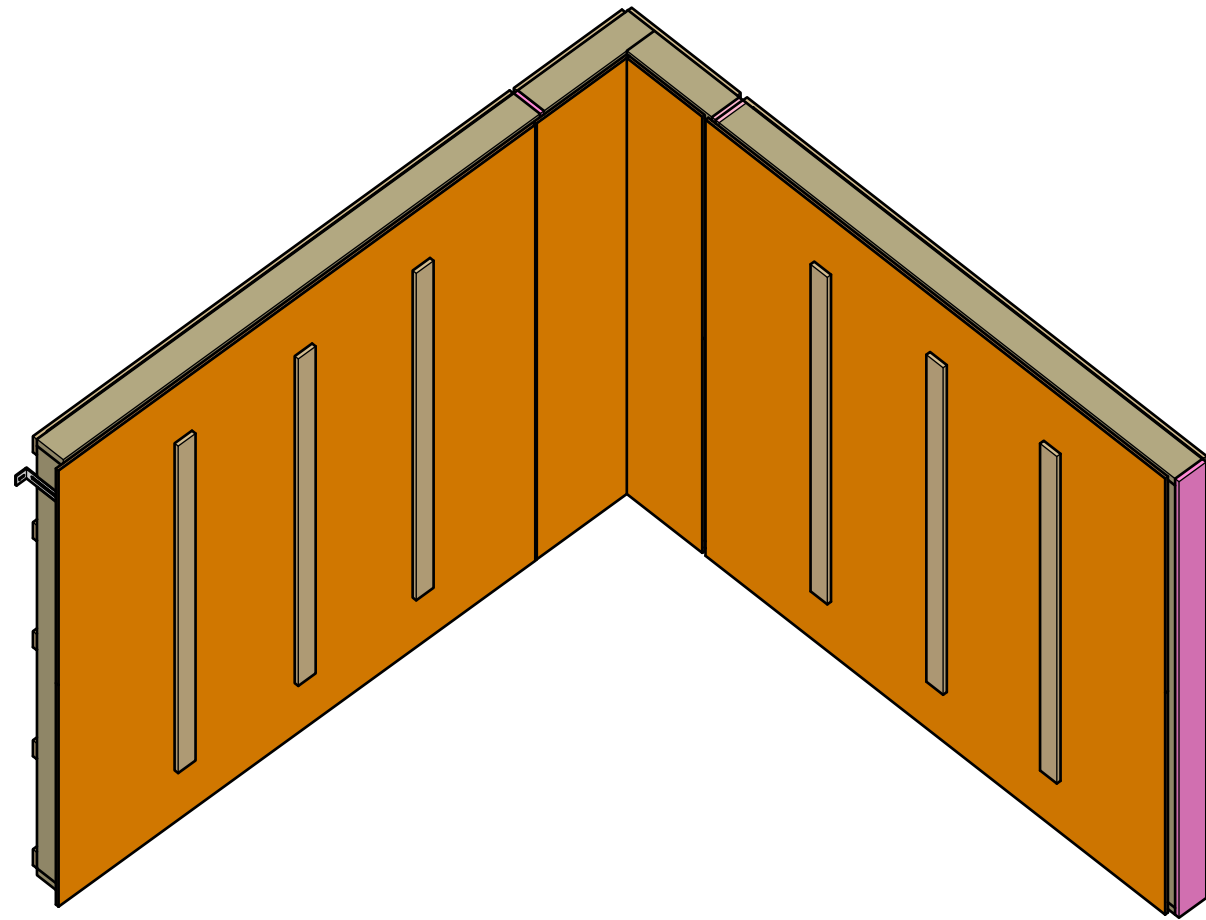


INTERIOR VIEW

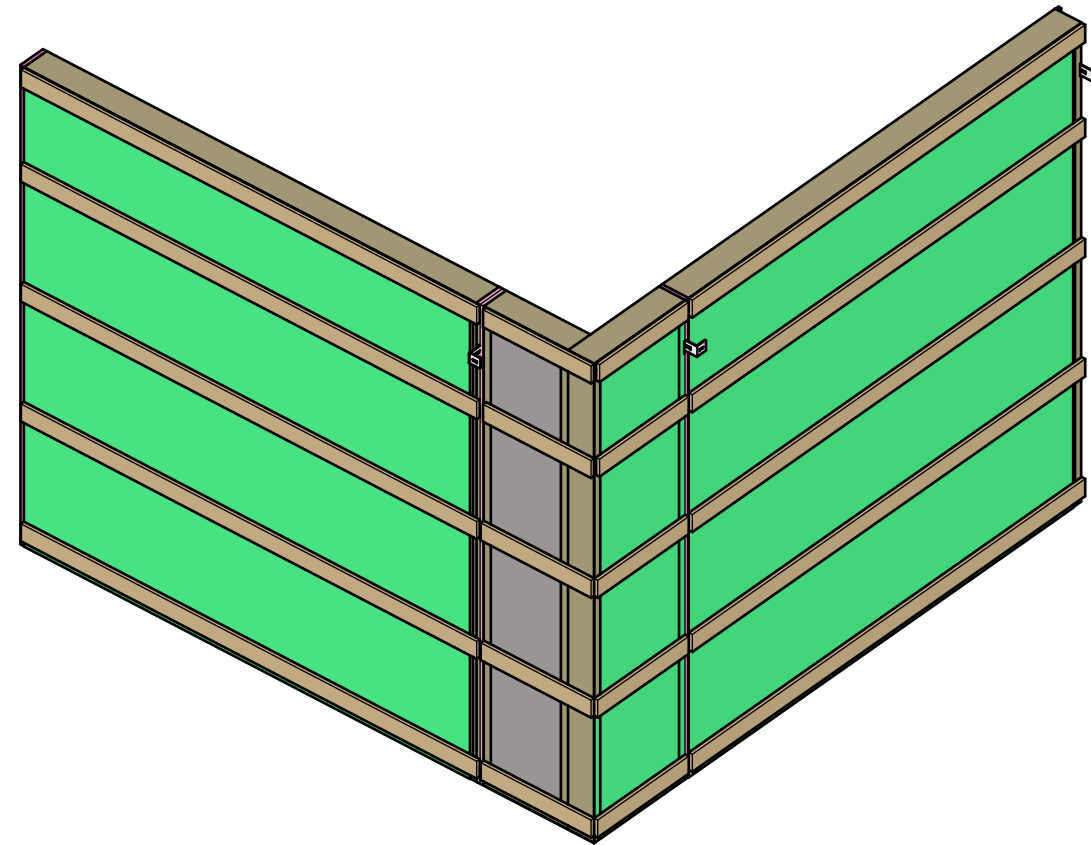
# Inside Corner Panel - Exploded View



# Inside Corner Installed

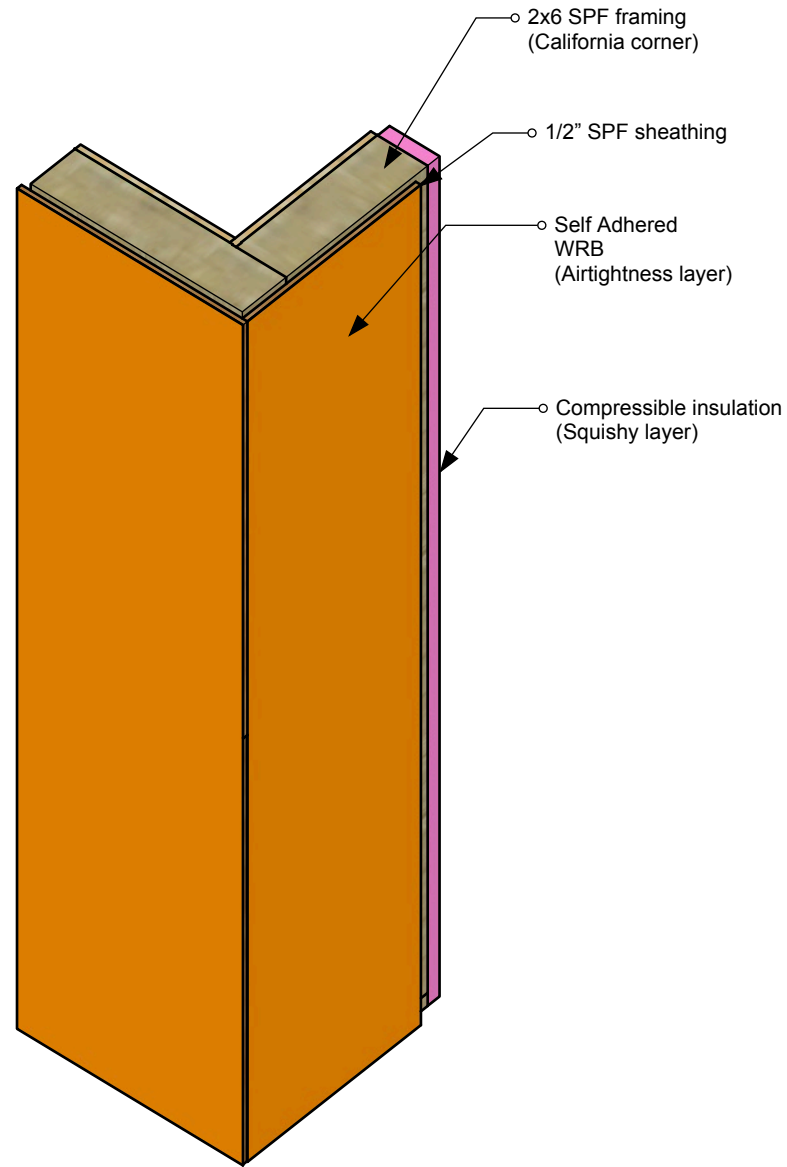


EXTERIOR VIEW

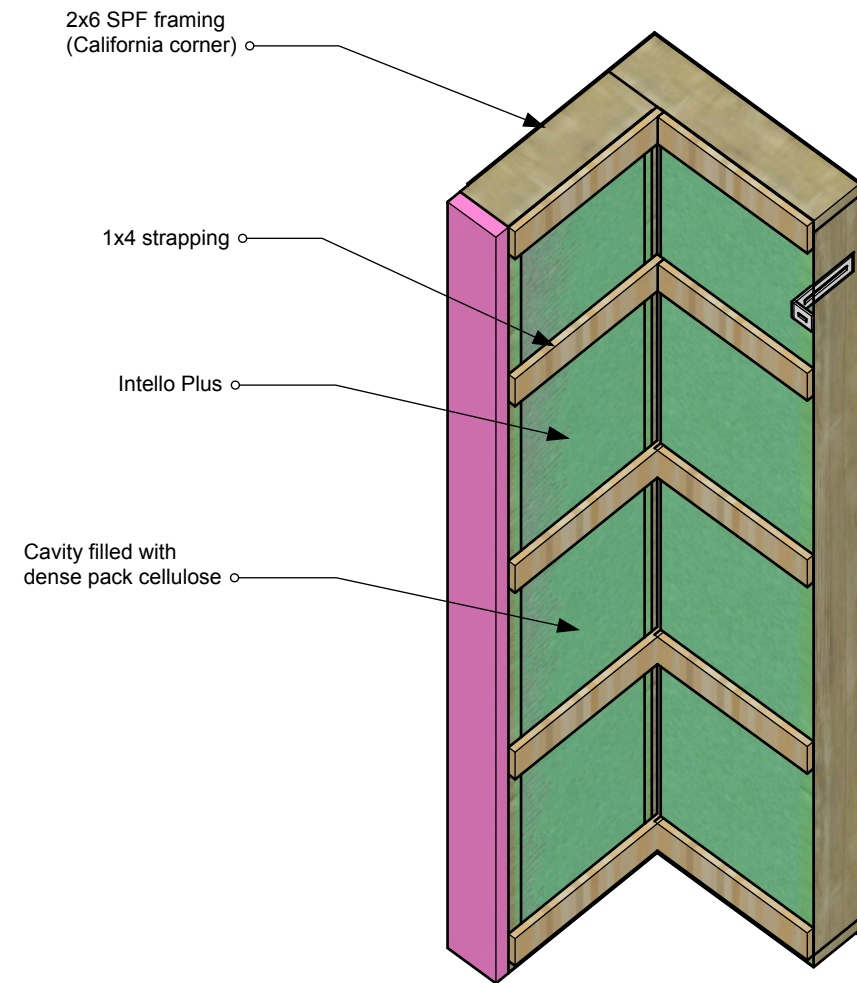


INTERIOR VIEW

# Outside Corner Panel - Overview

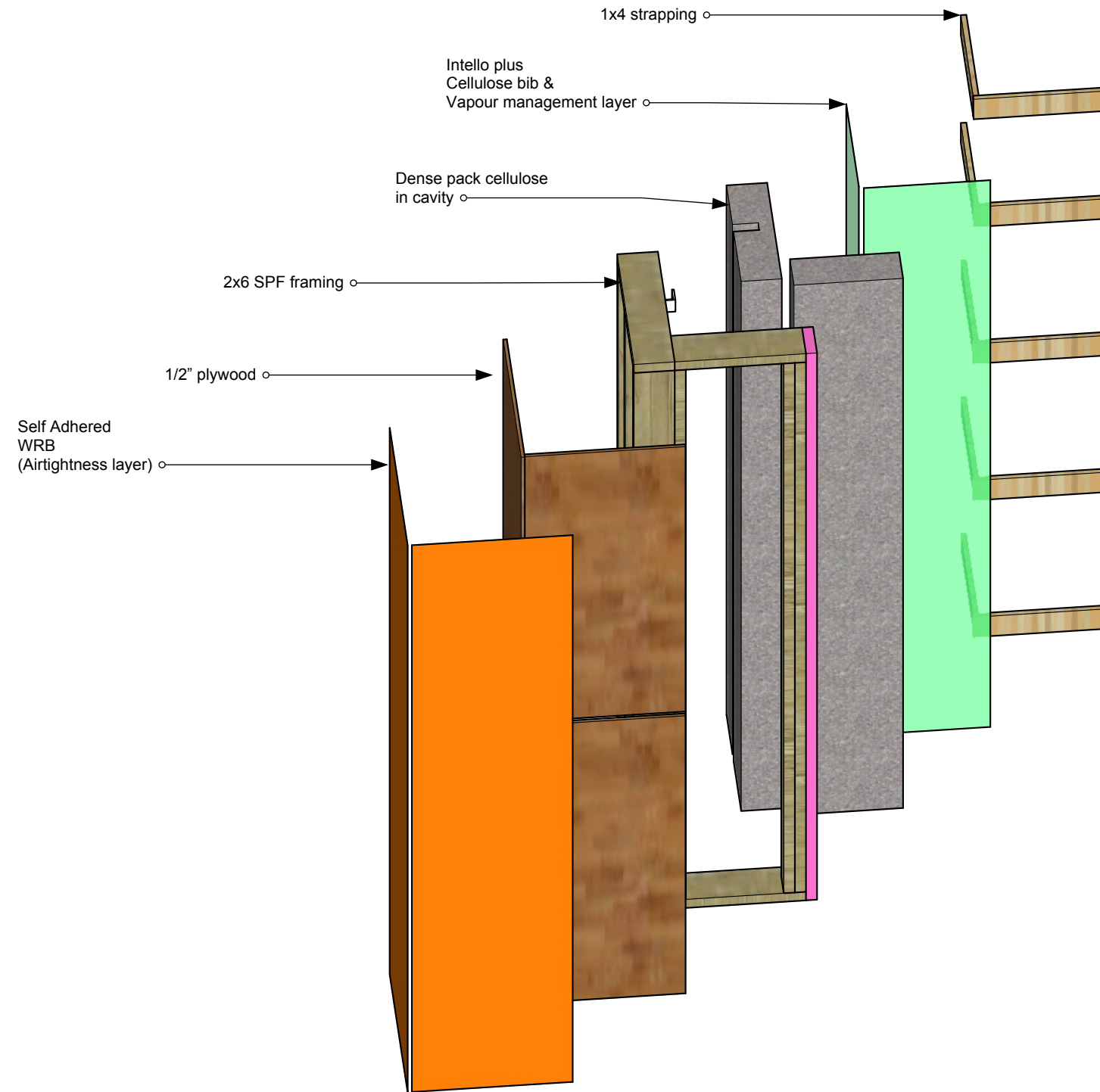


EXTERIOR VIEW



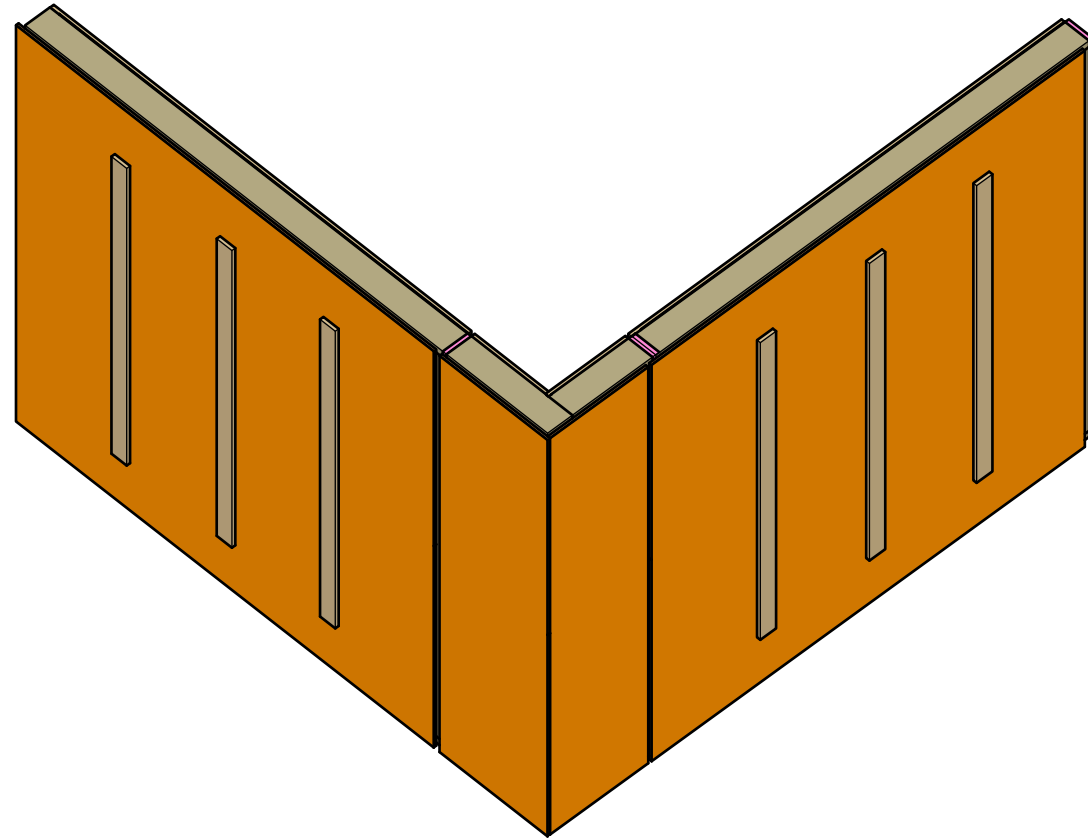
INTERIOR VIEW

# Outside Corner Panel - Exploded View

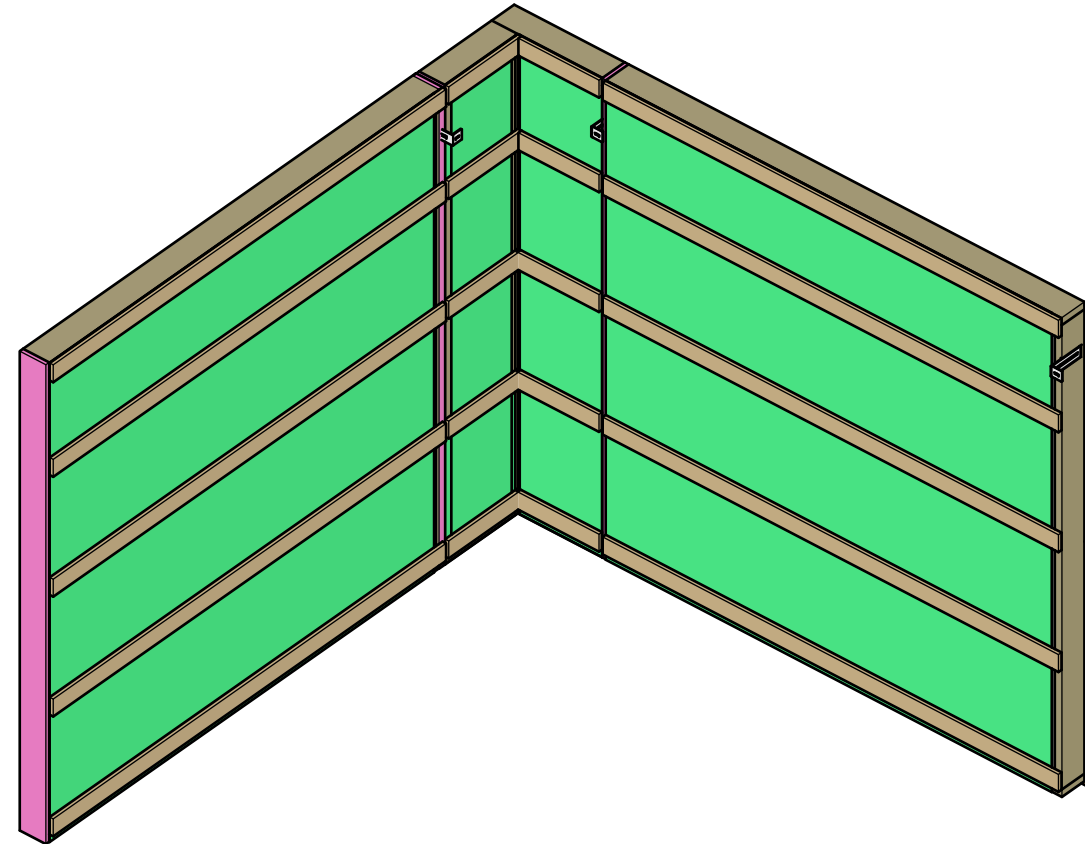




# Outside Corner Installed



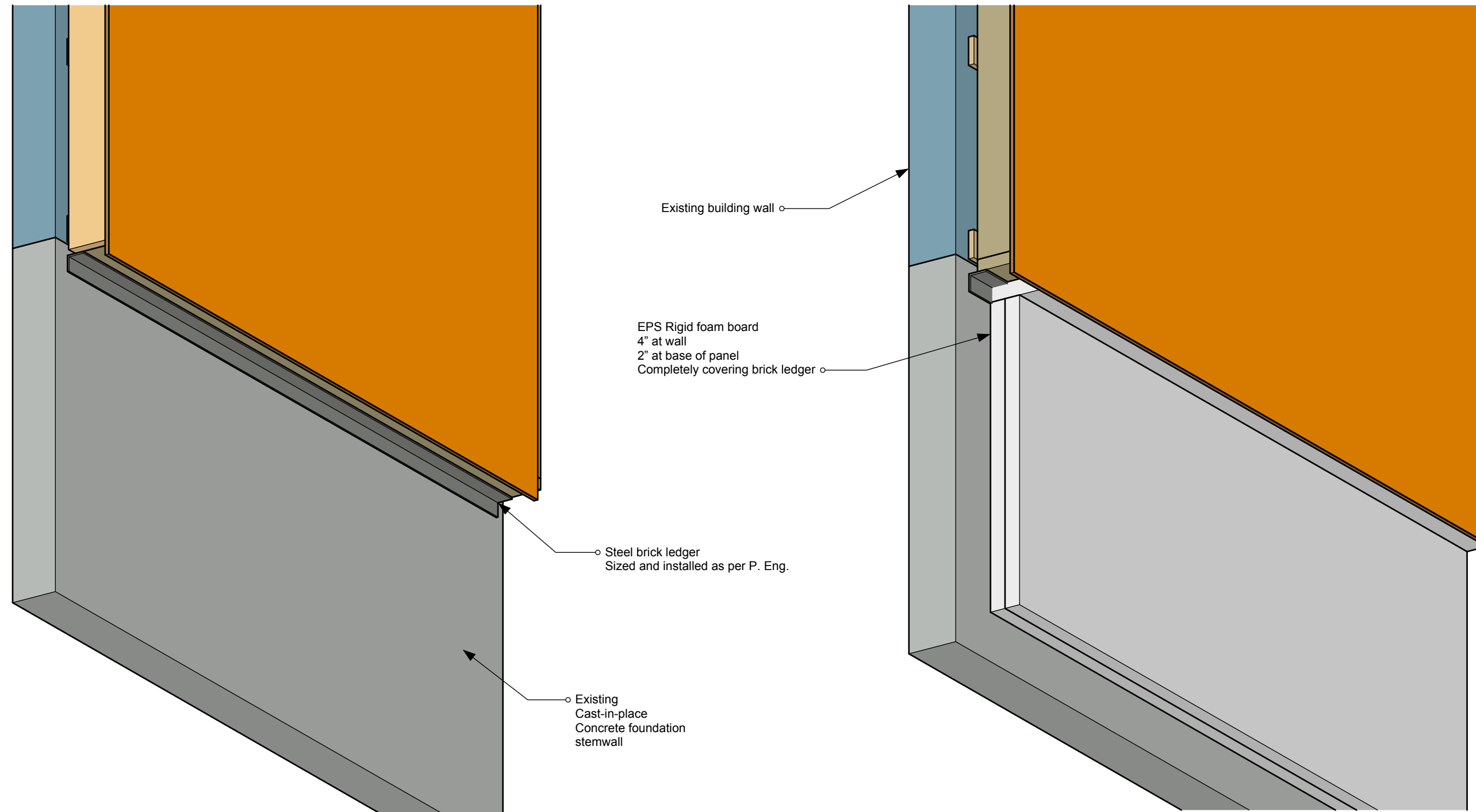
EXTERIOR VIEW



INTERIOR VIEW

# Foundation Attachment - Brick Ledger

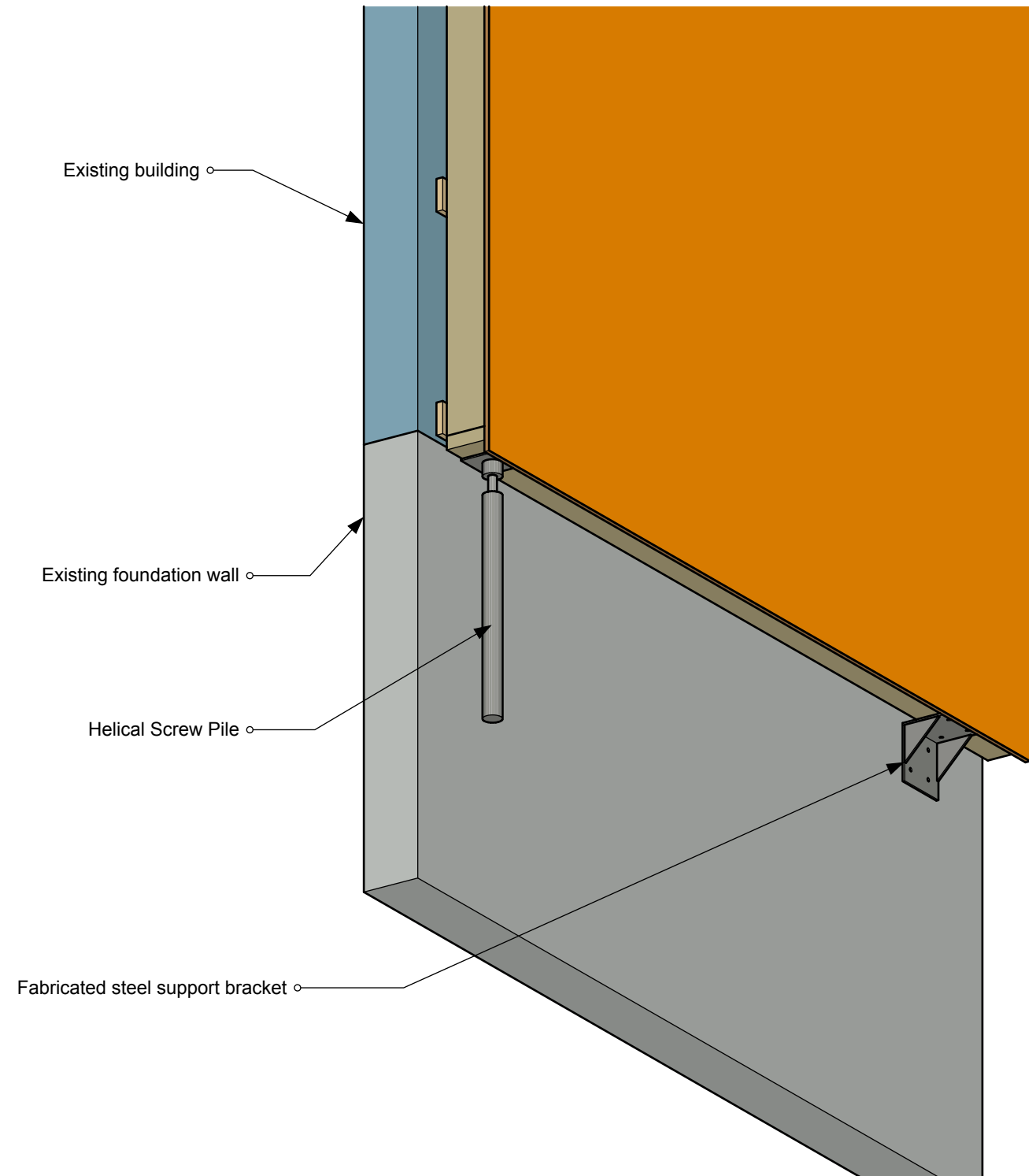
"Brick Ledger" style continuous ledger for panel support



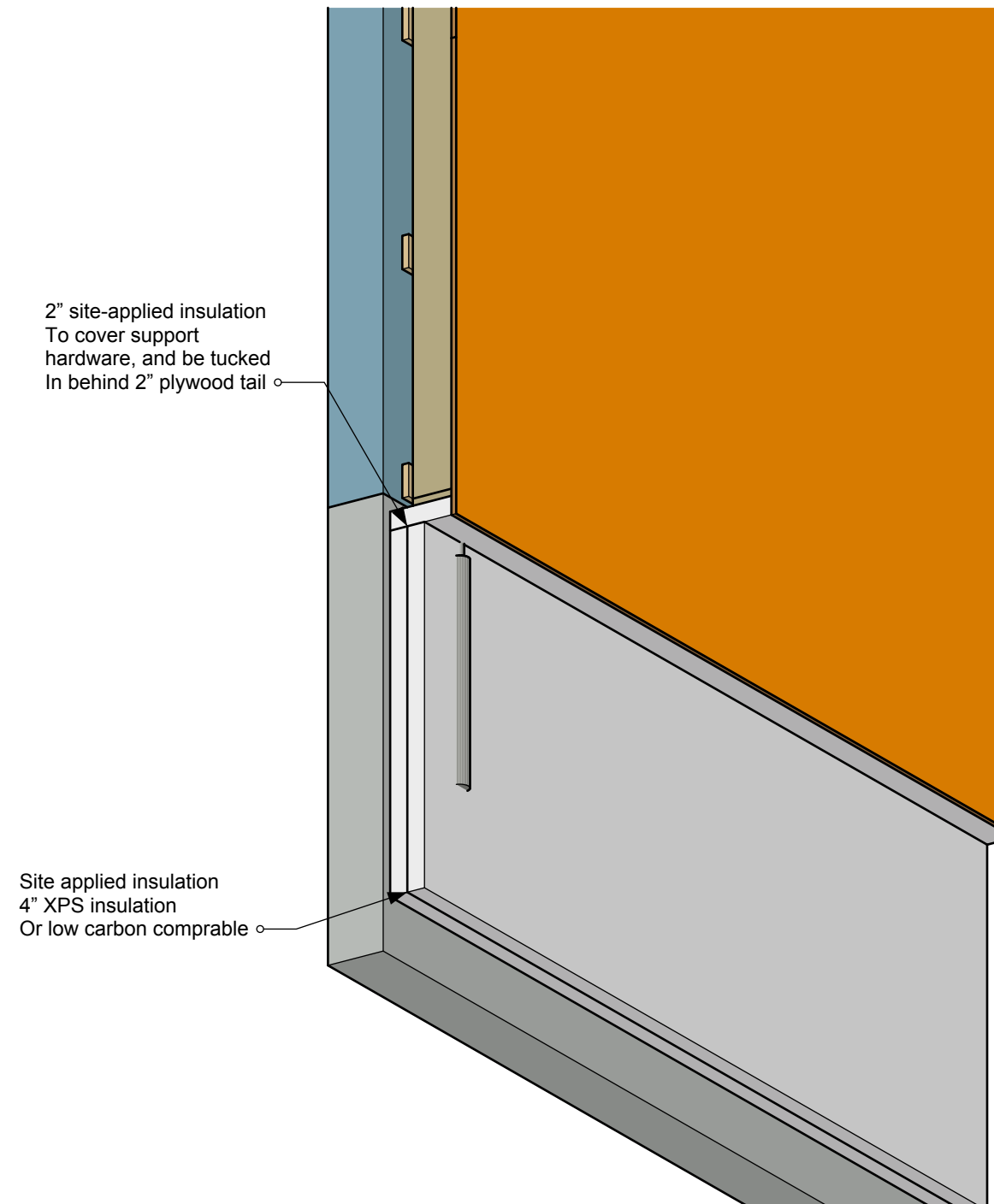
**BEFORE SITE INSULATION**

**AFTER SITE INSULATION**

# Alternate Foundation Attachment - Pile or Bracket



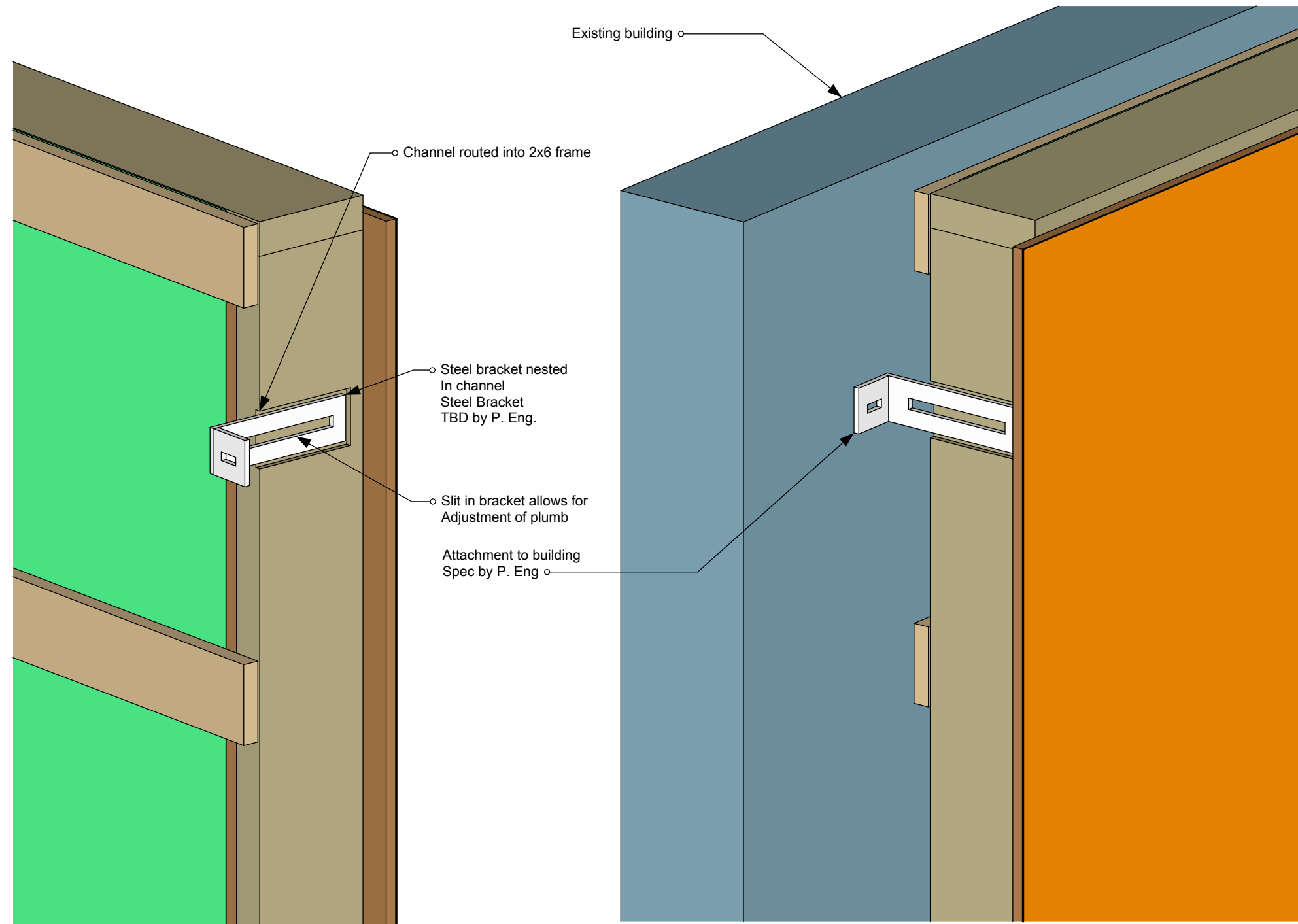
BEFORE SITE INSULATION



AFTER SITE INSULATION

# Attach to Existing Building

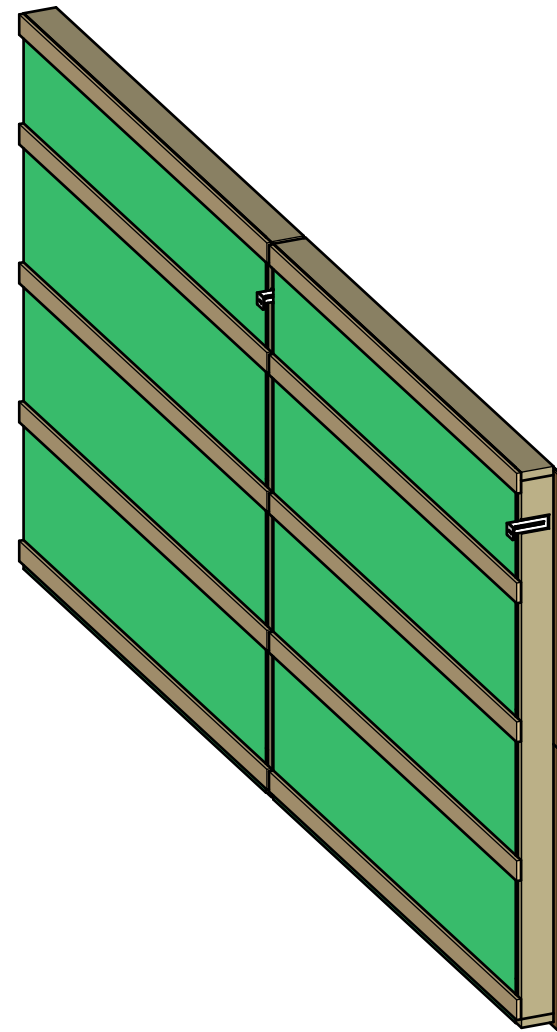
Bracket to attach individual panels to existing



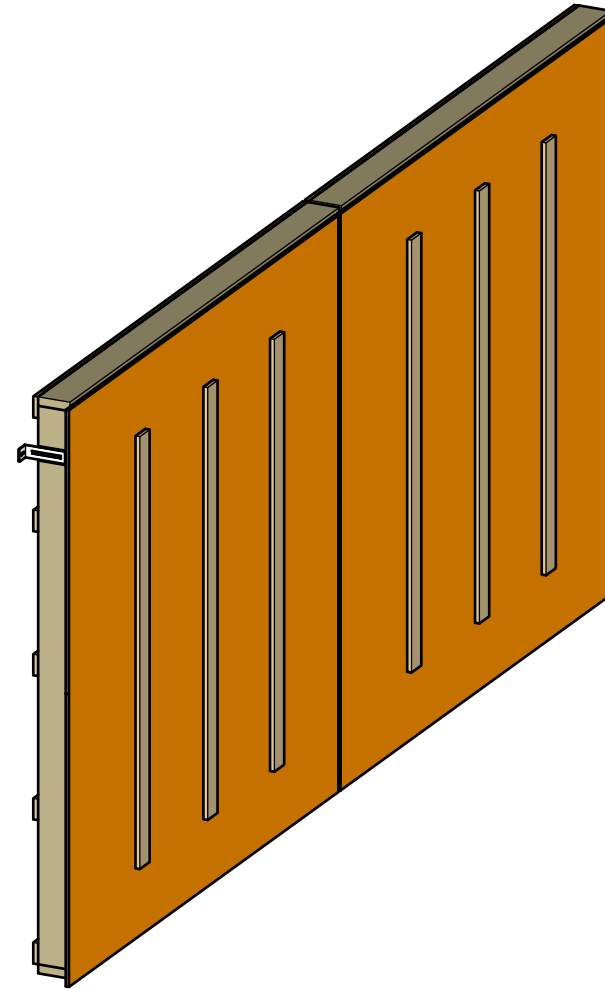
INTERIOR VIEW

EXTERIOR VIEW

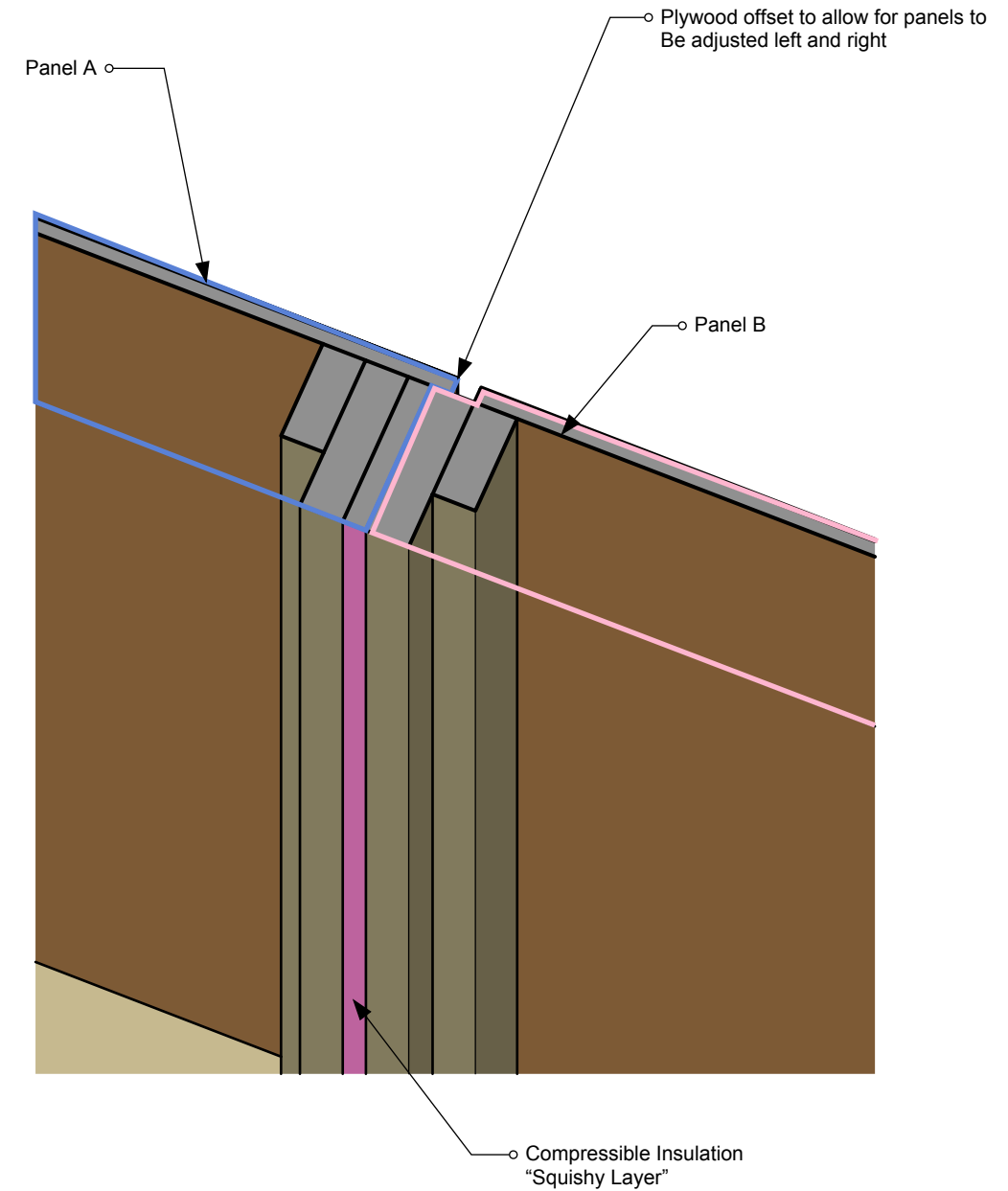
# Vertical Wall Joints



INTERIOR VIEW

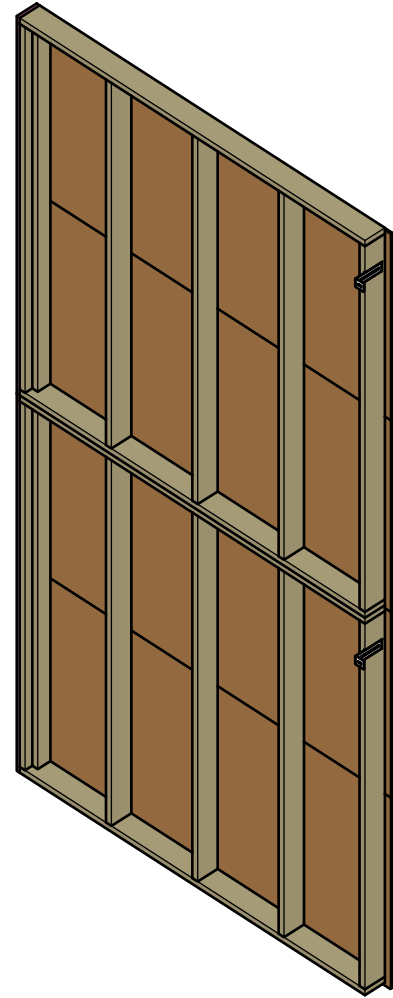


EXTERIOR VIEW

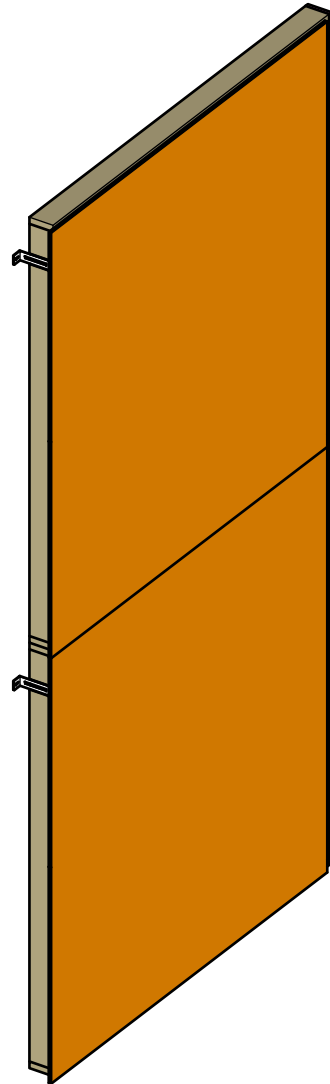


SECTION VIEW

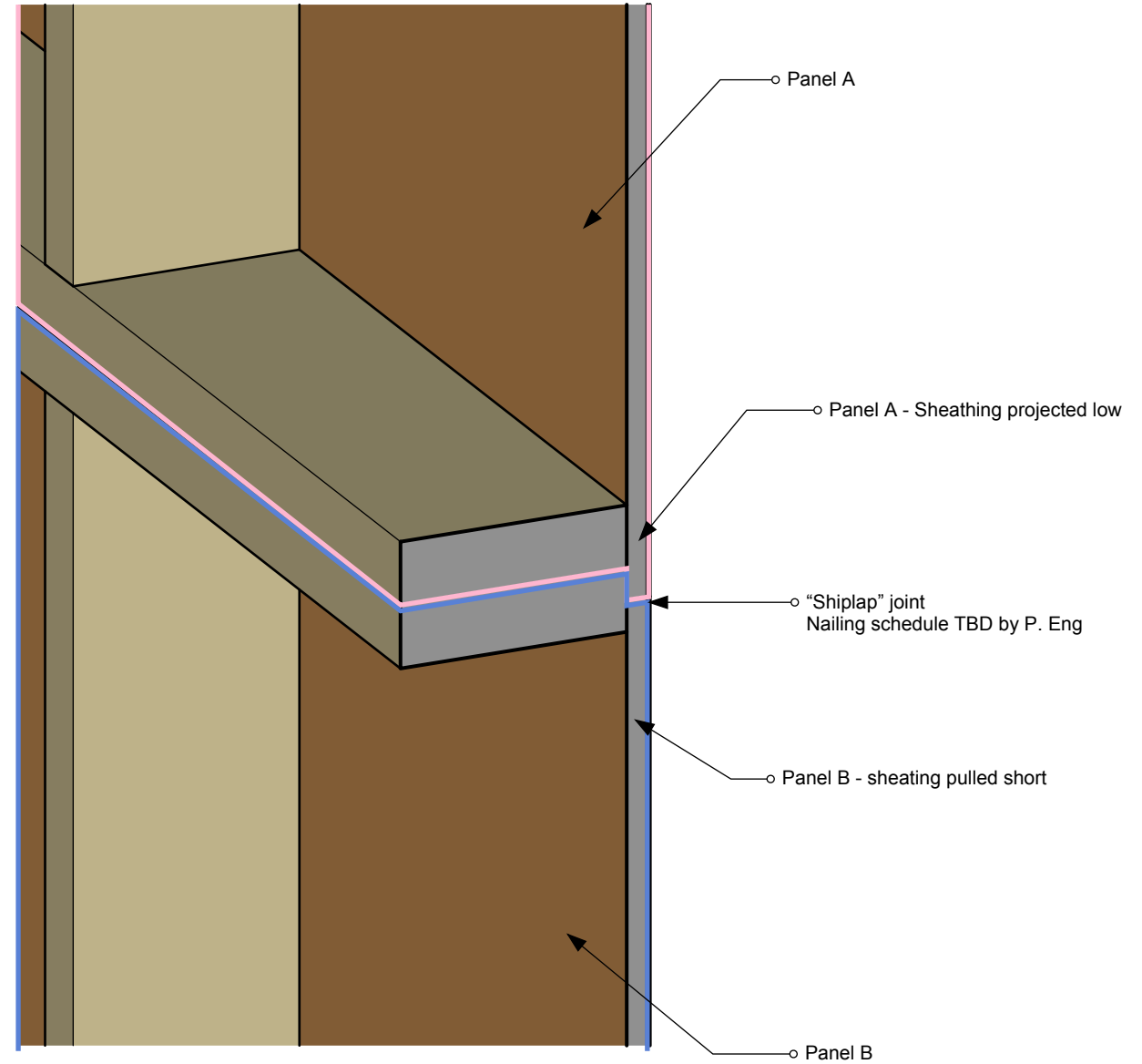
# Horizontal Wall Joins



INTERIOR VIEW

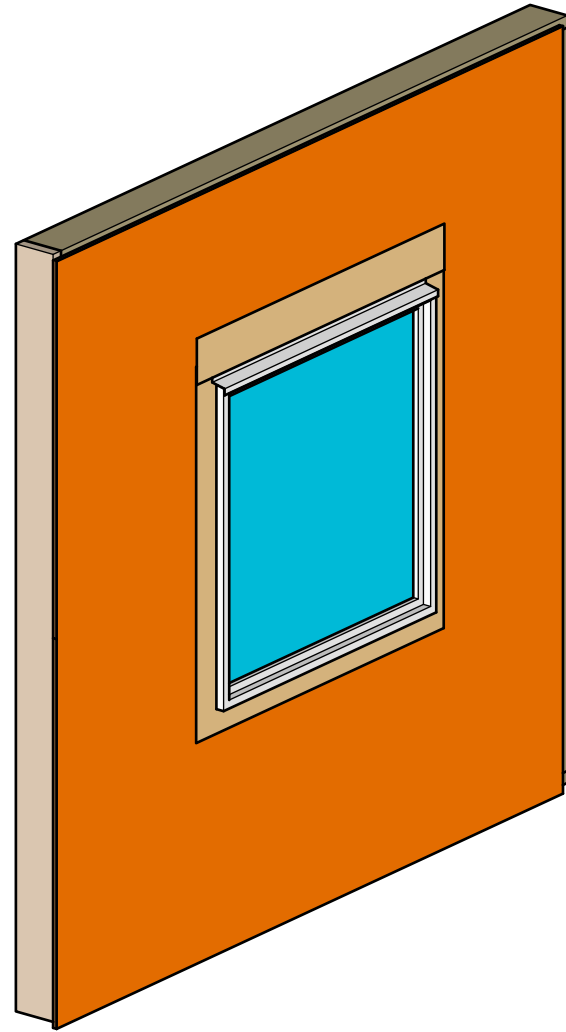


EXTERIOR VIEW



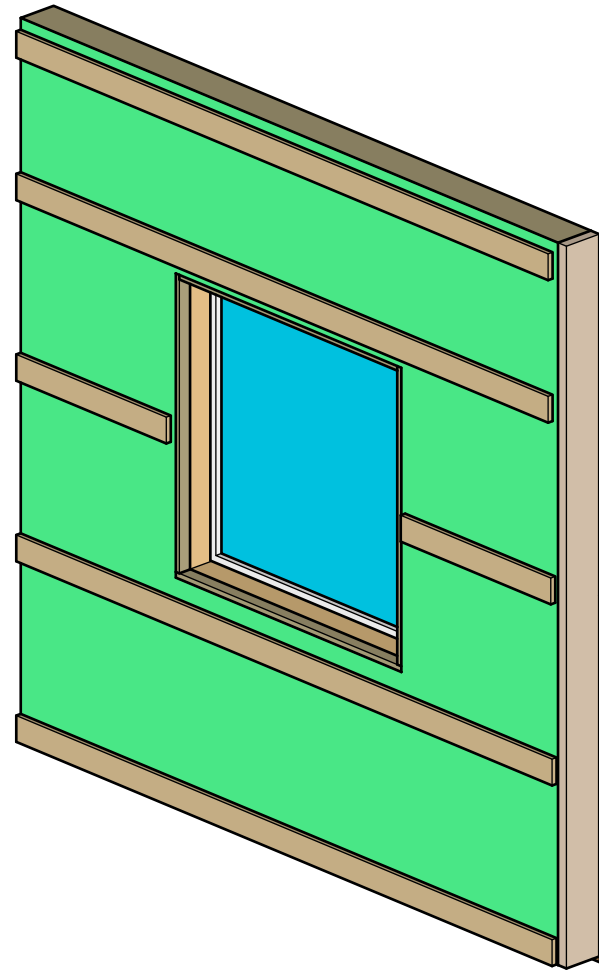
SECTION VIEW

# Window Panel

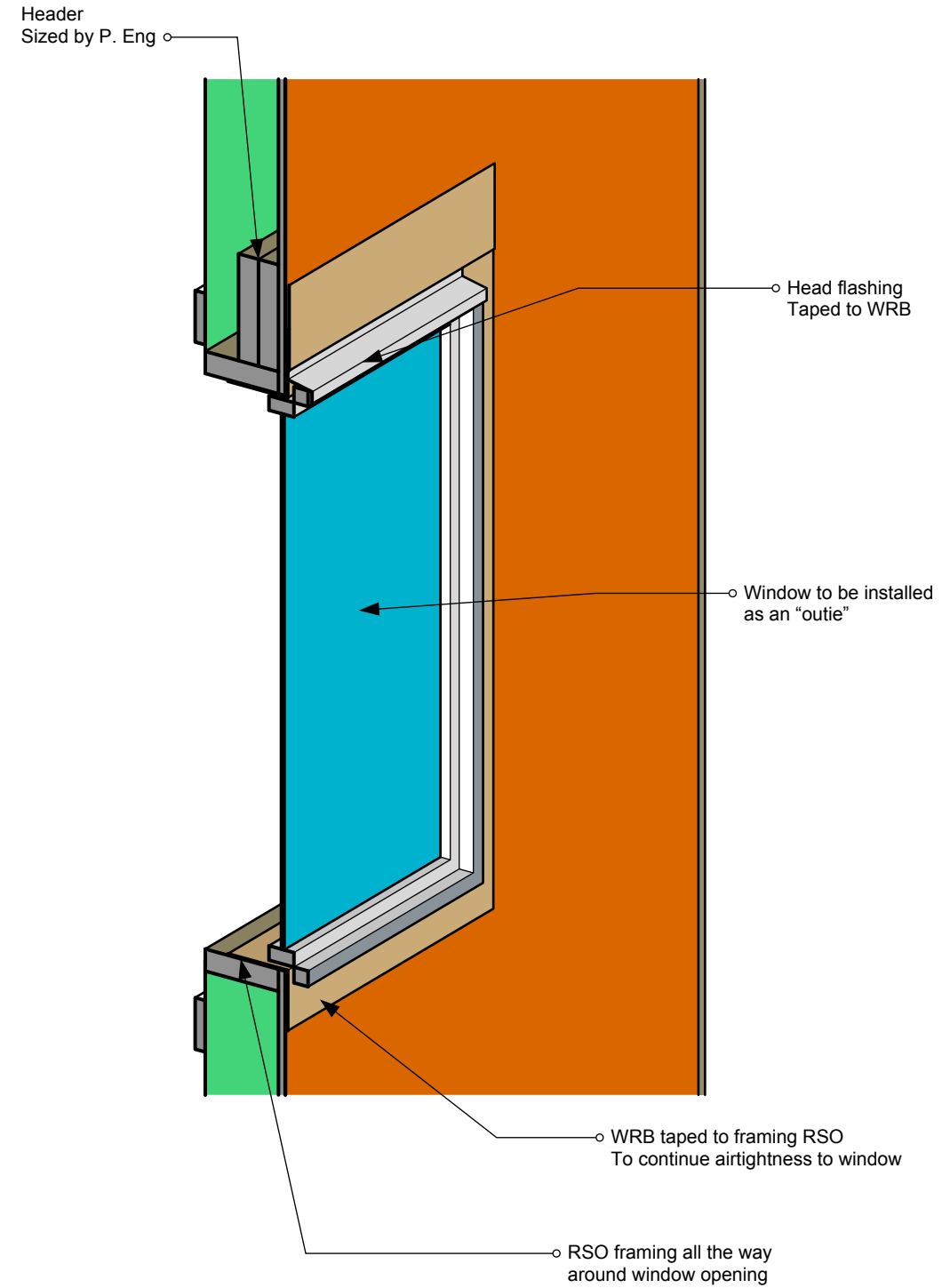


**PANEL  
EXTERIOR VIEW**

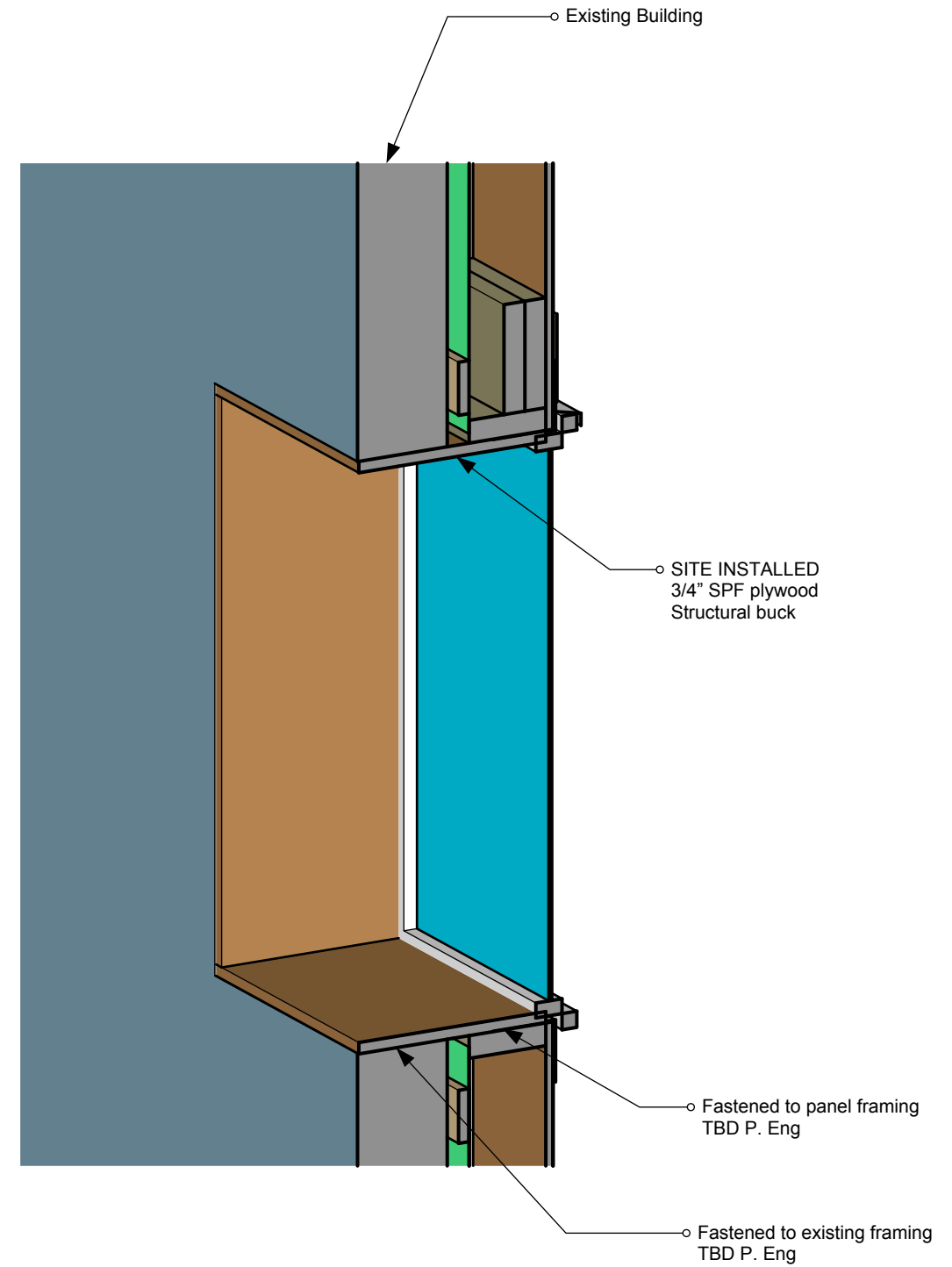
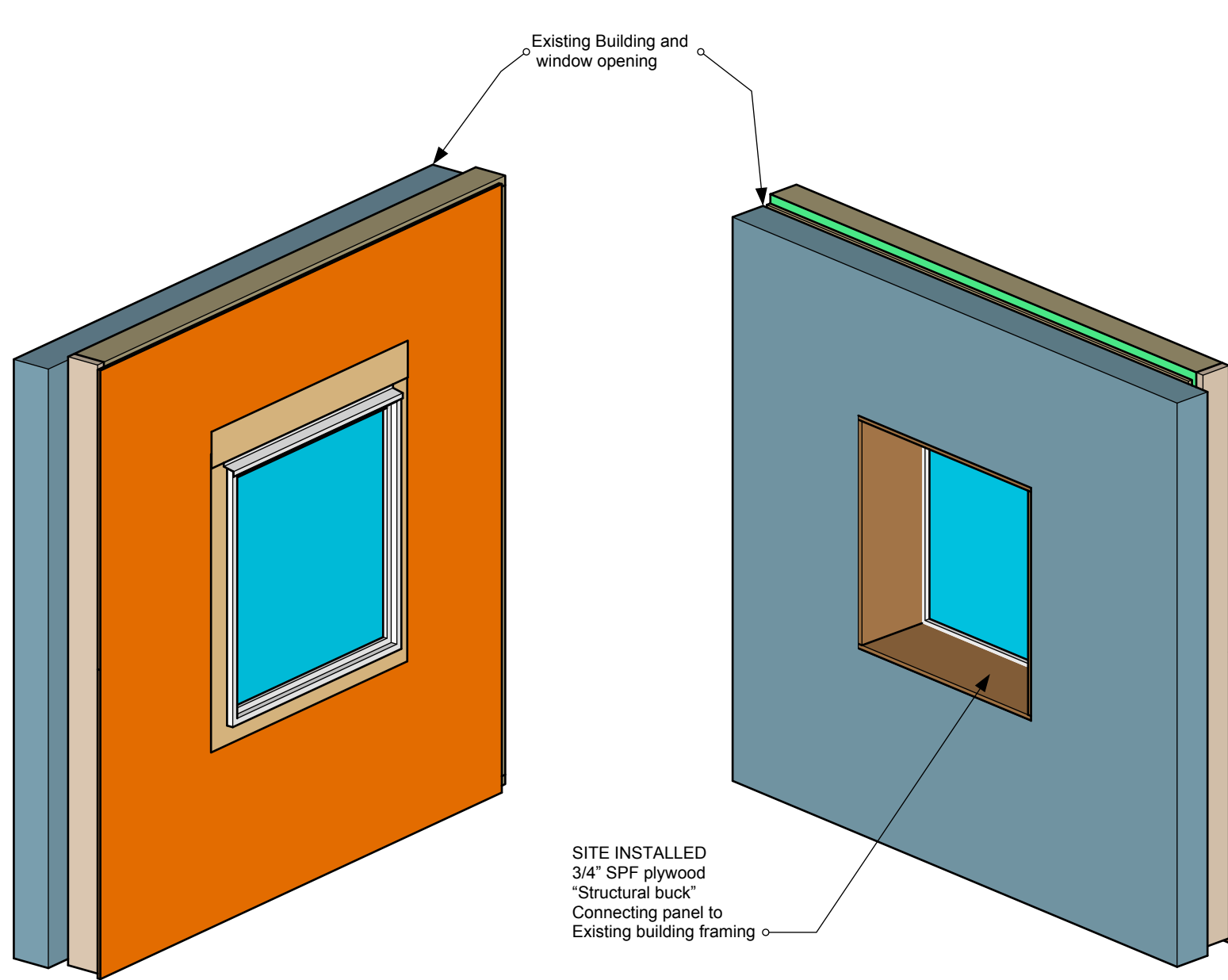
Window installed in factory  
Window installed as an  
"outie" to minimize how  
much window sill there is  
exposed to the rain



**PANEL  
EXTERIOR VIEW**

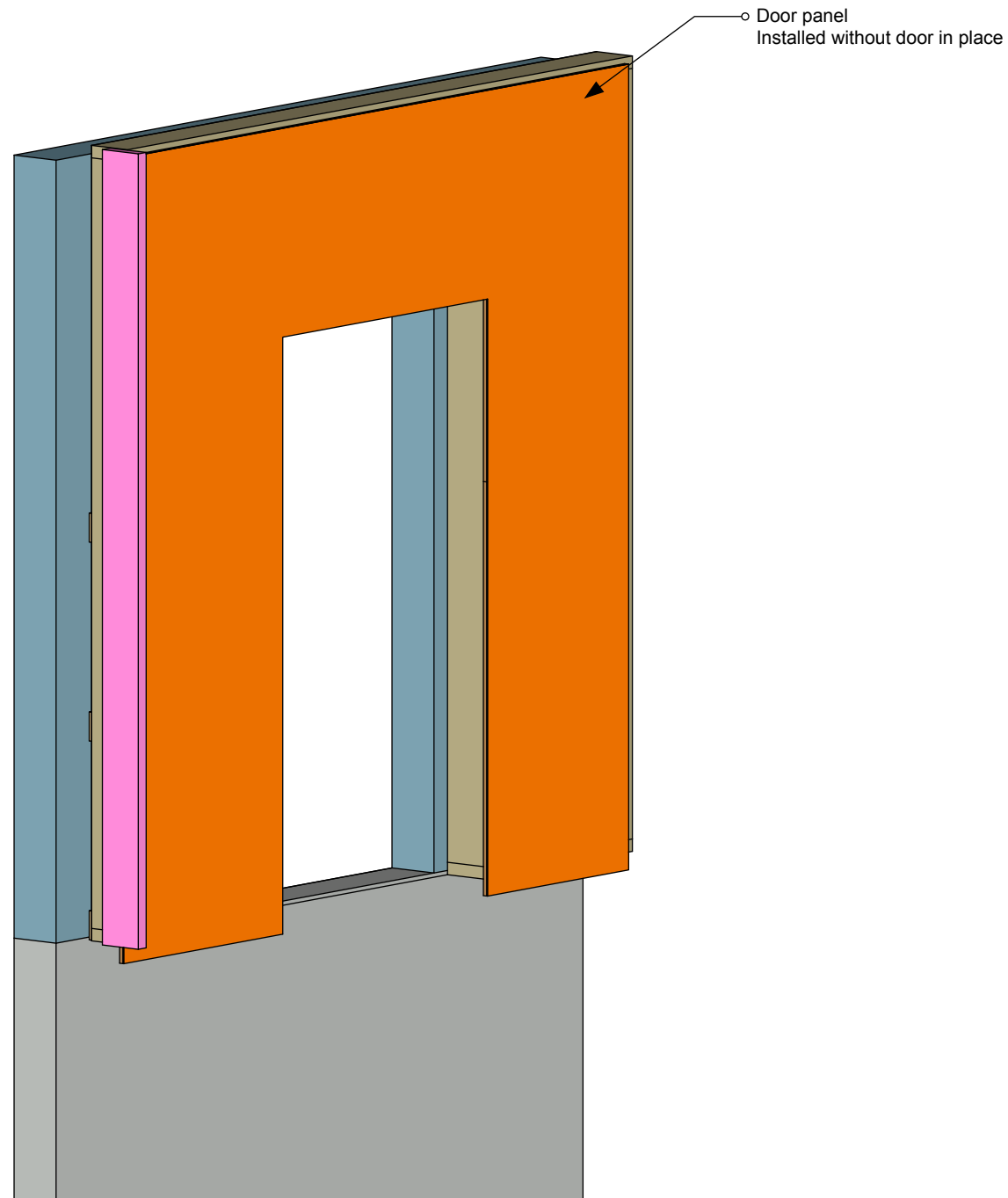


# Window Panel Install

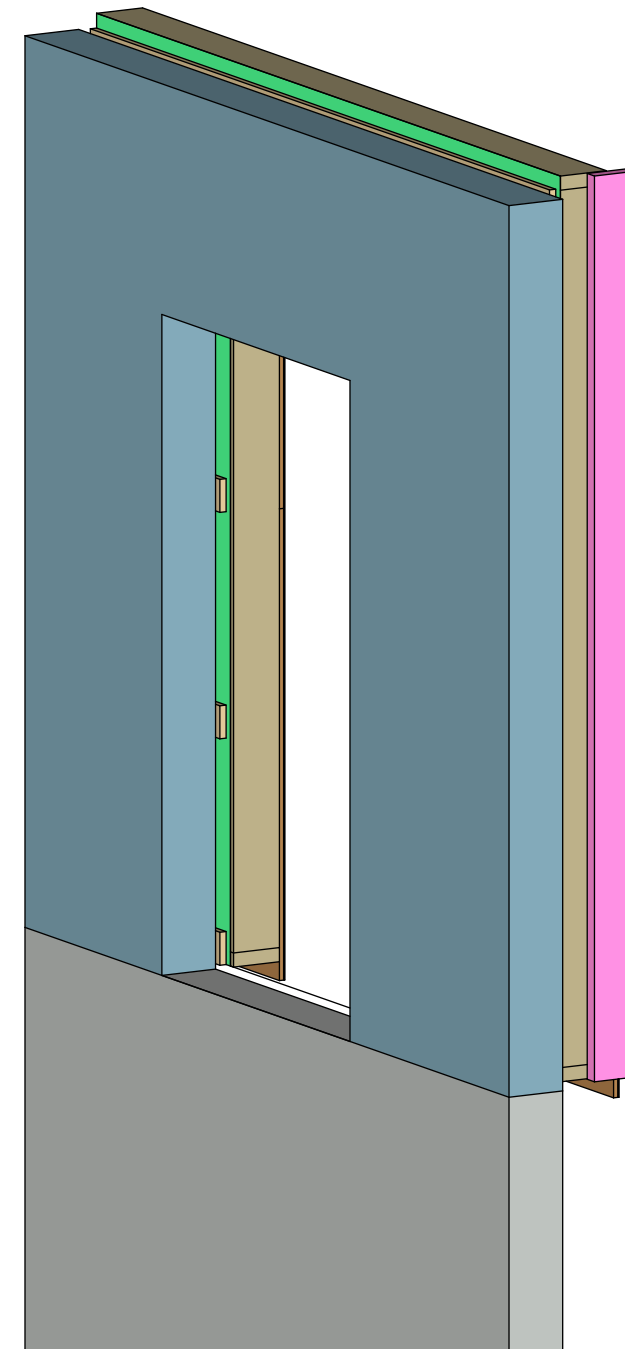




# Door Penetration Panel

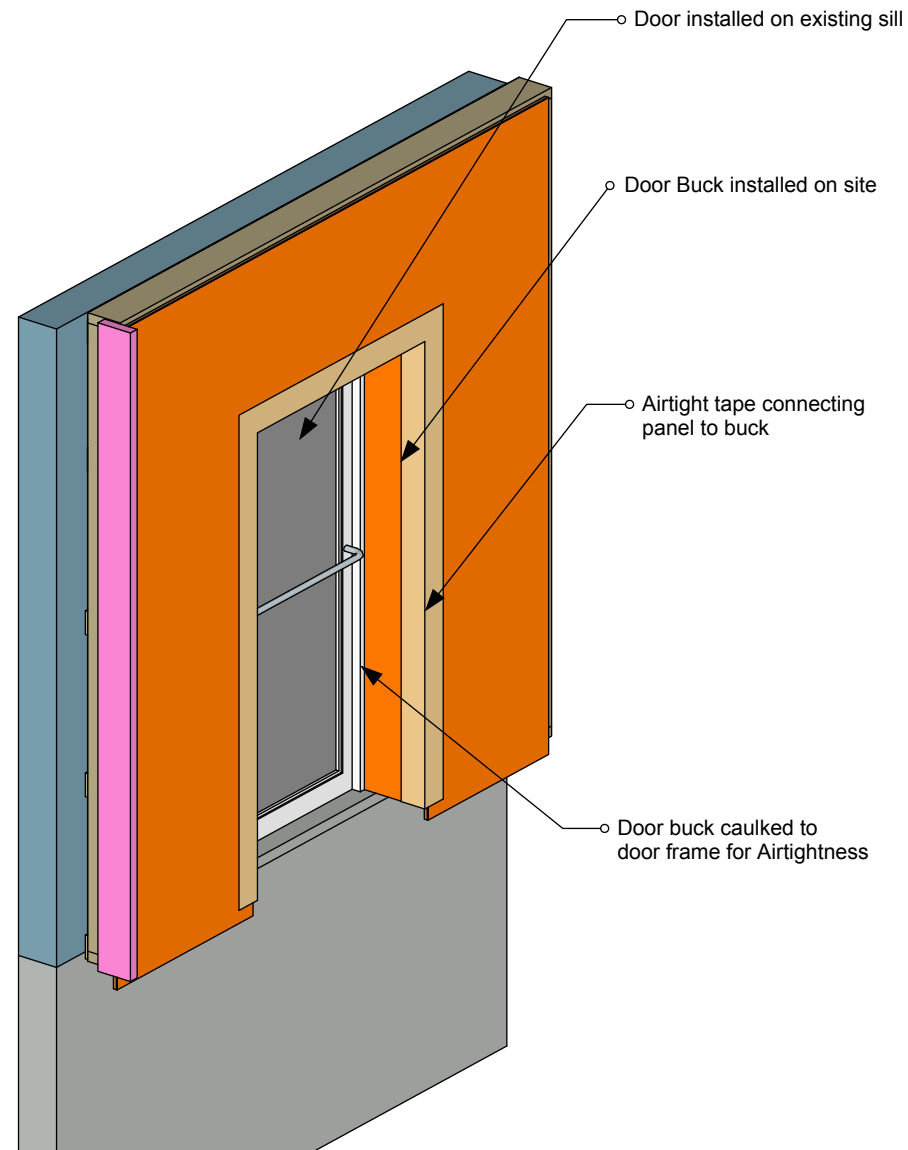


EXTERIOR VIEW

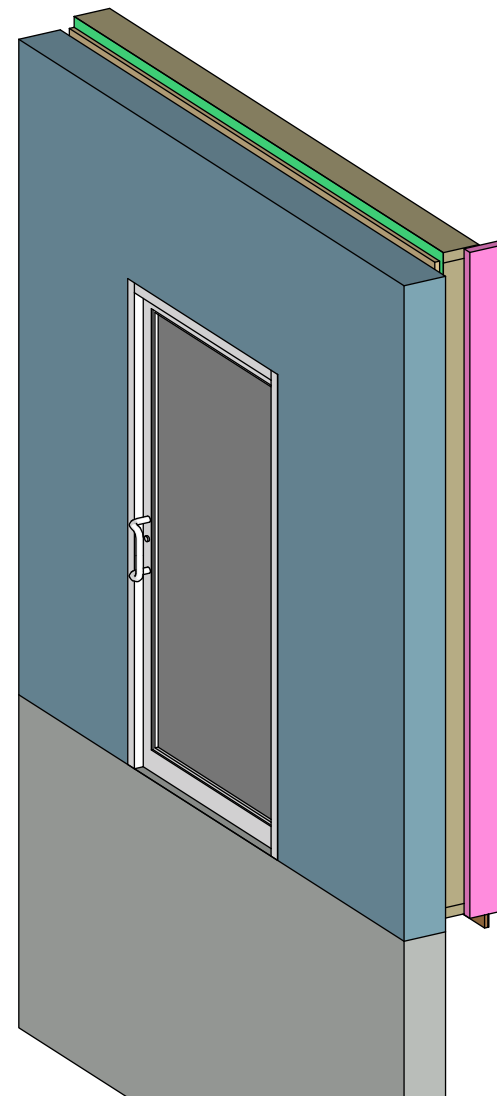


INTERIOR VIEW

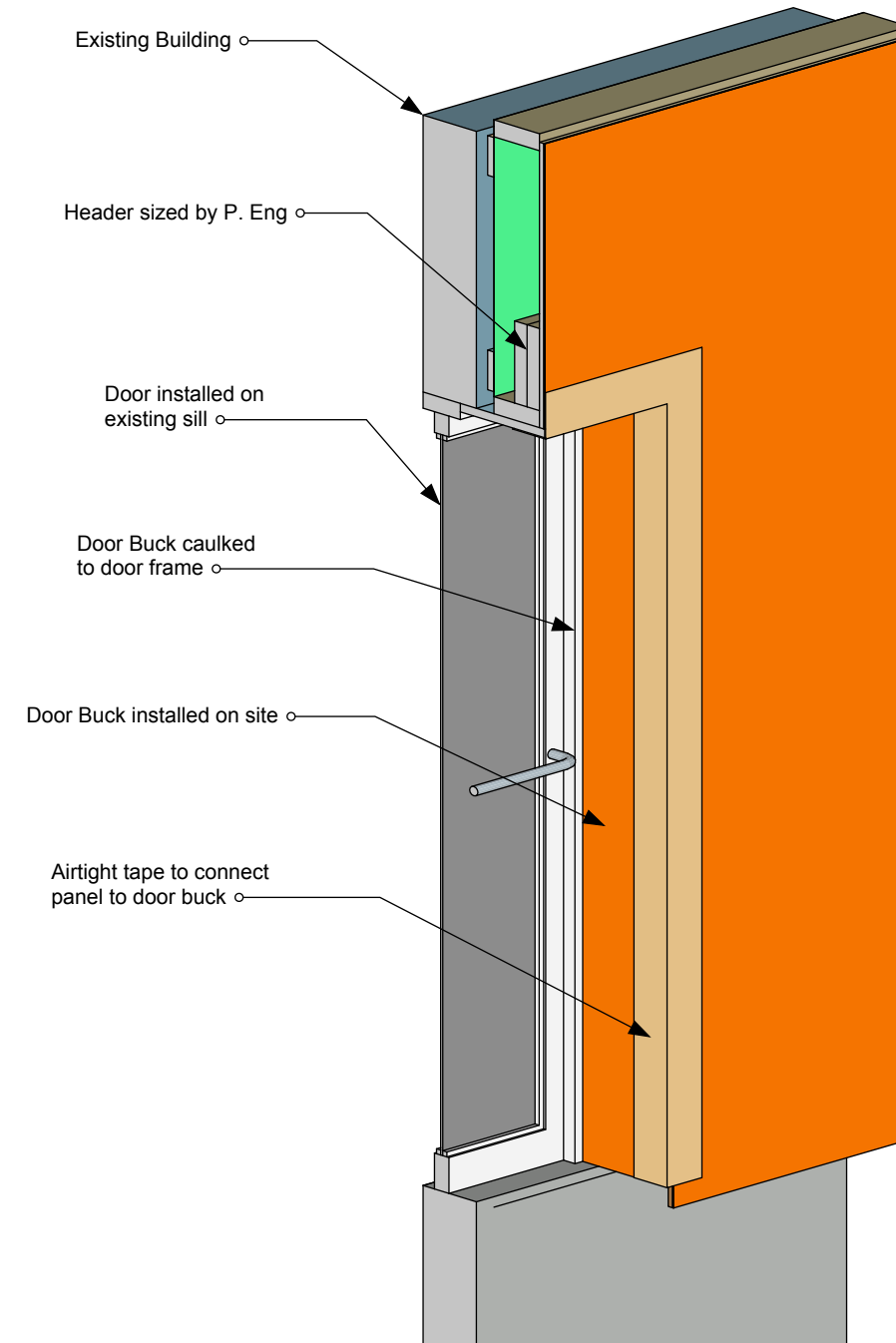
# Door Penetration Panel Installed



EXTERIOR VIEW



INTERIOR VIEW



SECTION VIEW