

Wall Panel Schematics

Cellulose - R21 - 2x8 - 1/2" Plywood

ReCover Initiative



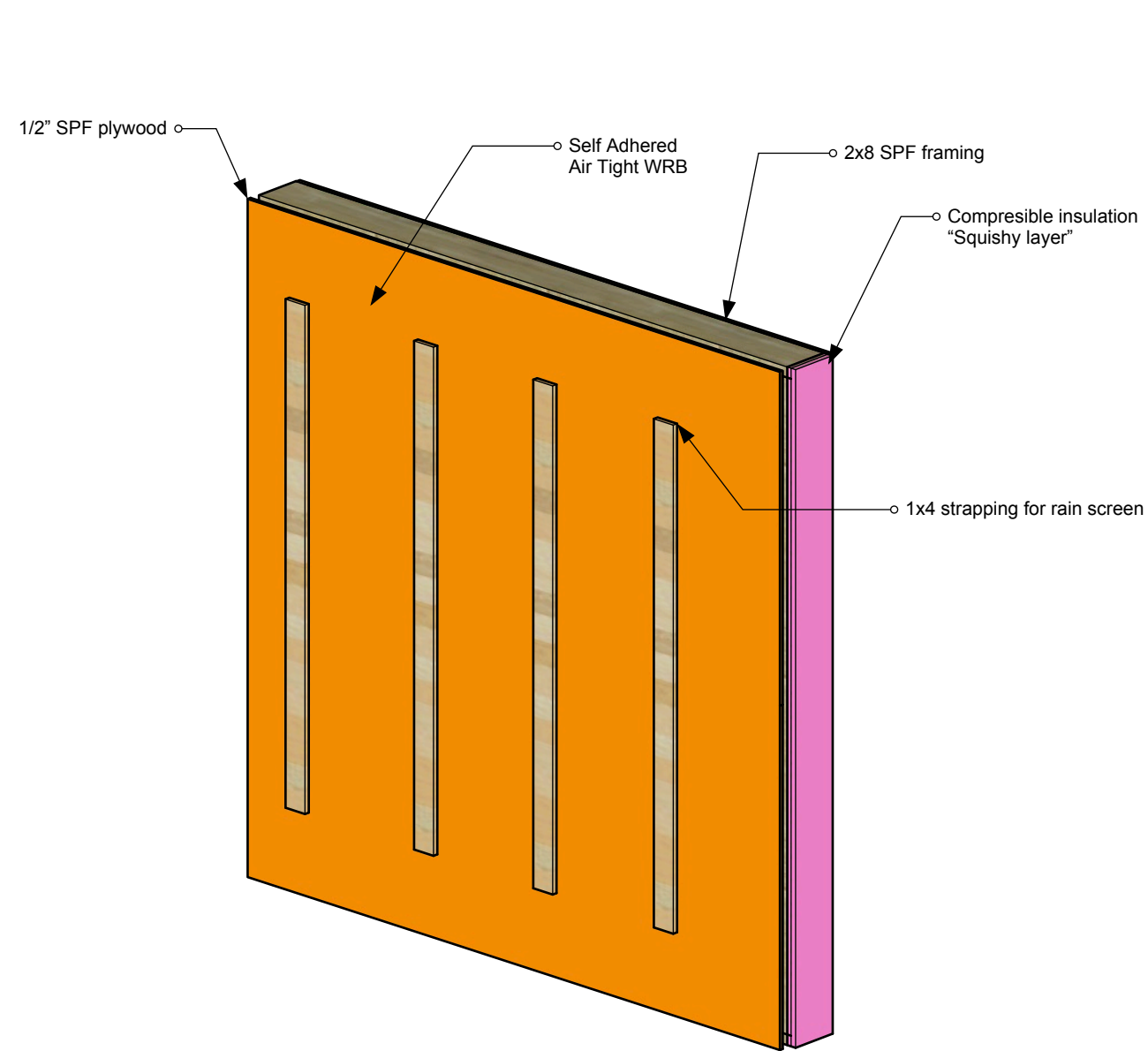
Version Date
February 27, 2023

PROJECT
2x6 R21 Cellulose
Panel Schematics

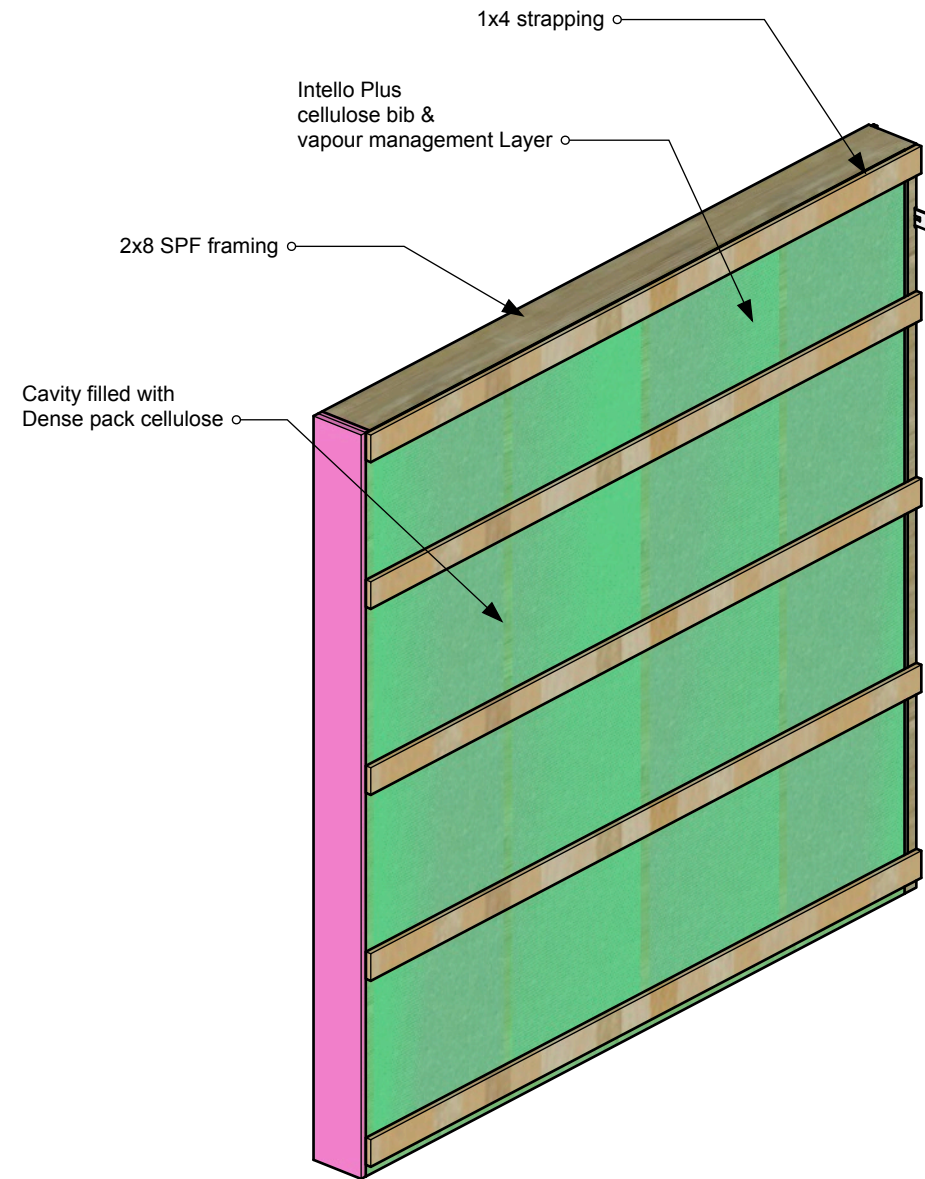
DRAWN BY
Nick Rudnicki

01

Basic Panel - Overview

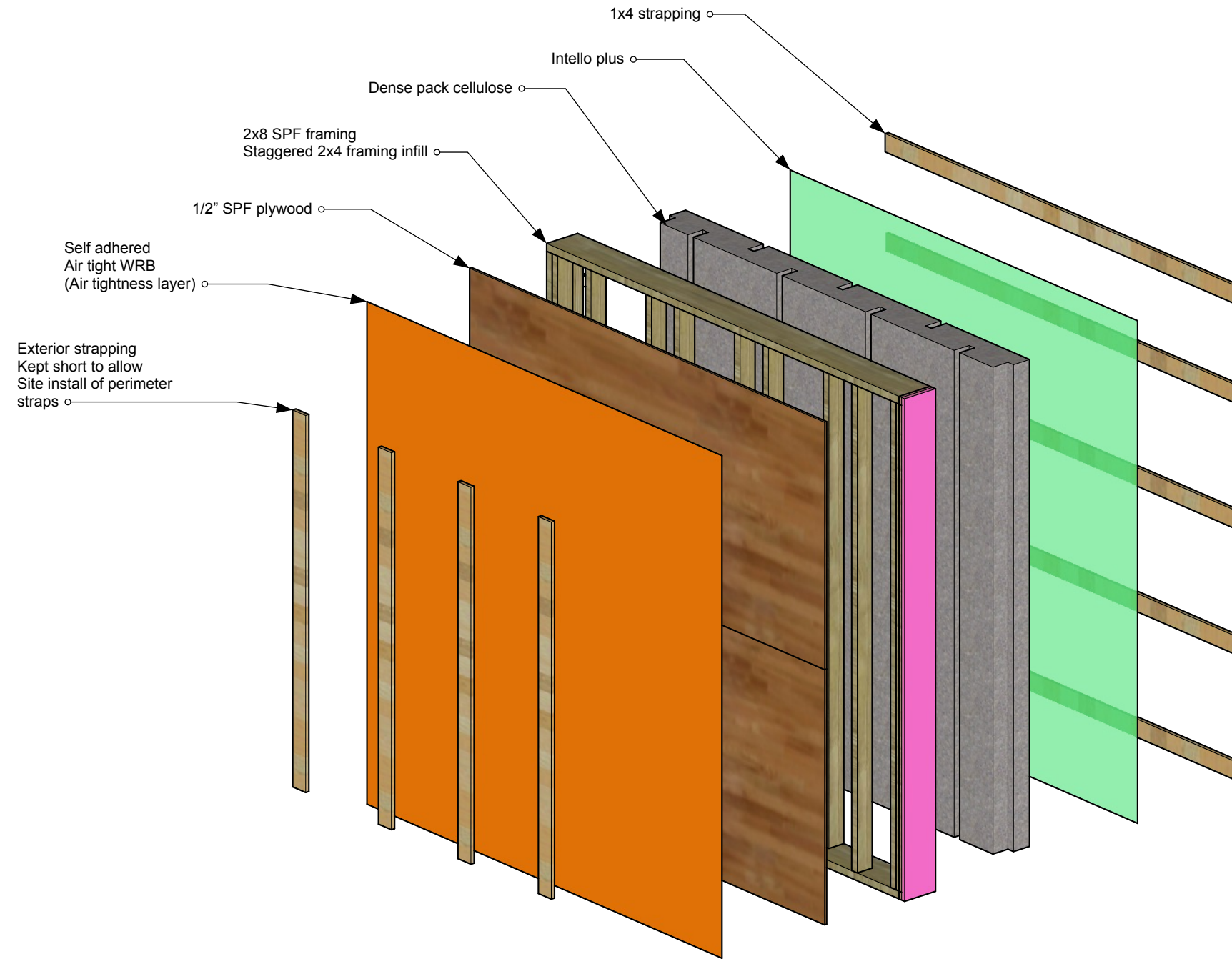


EXTERIOR VIEW

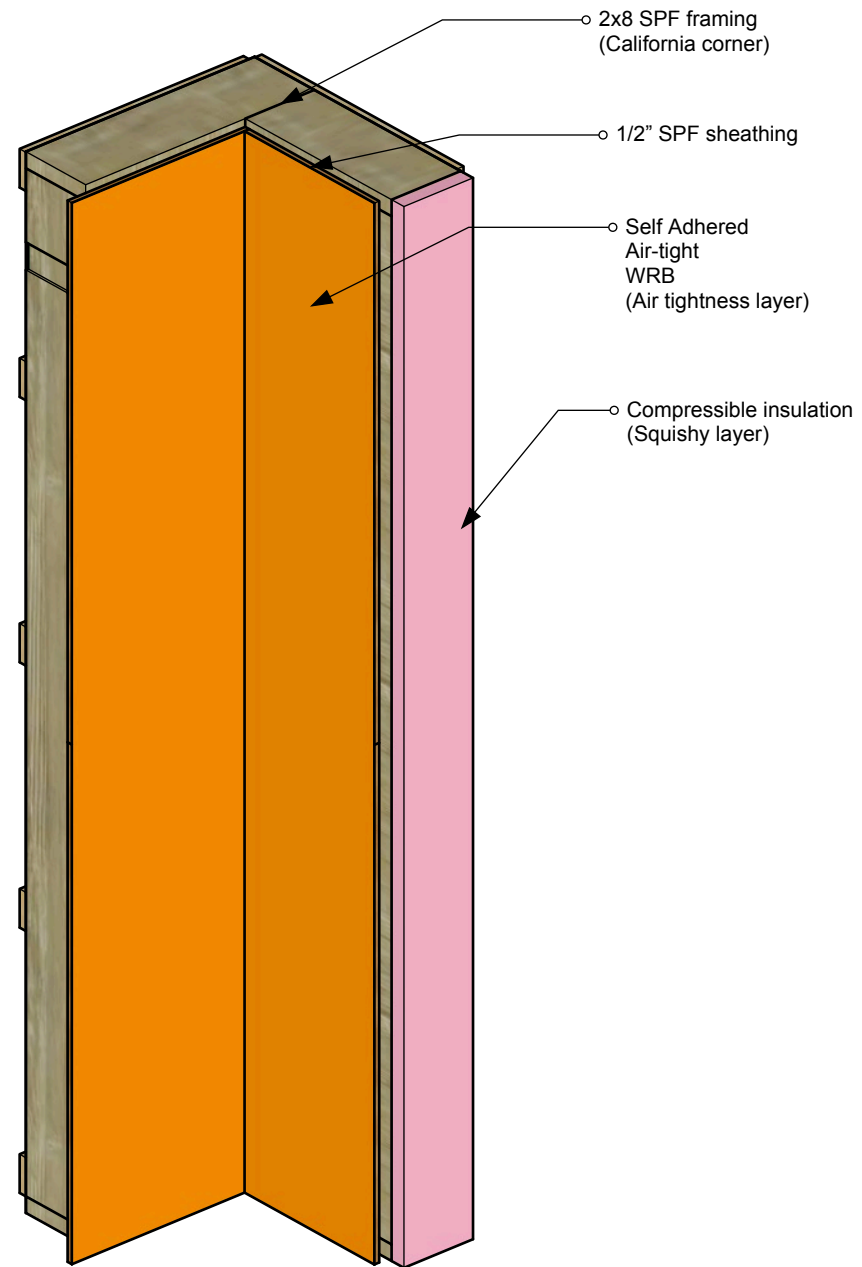


INTERIOR VIEW

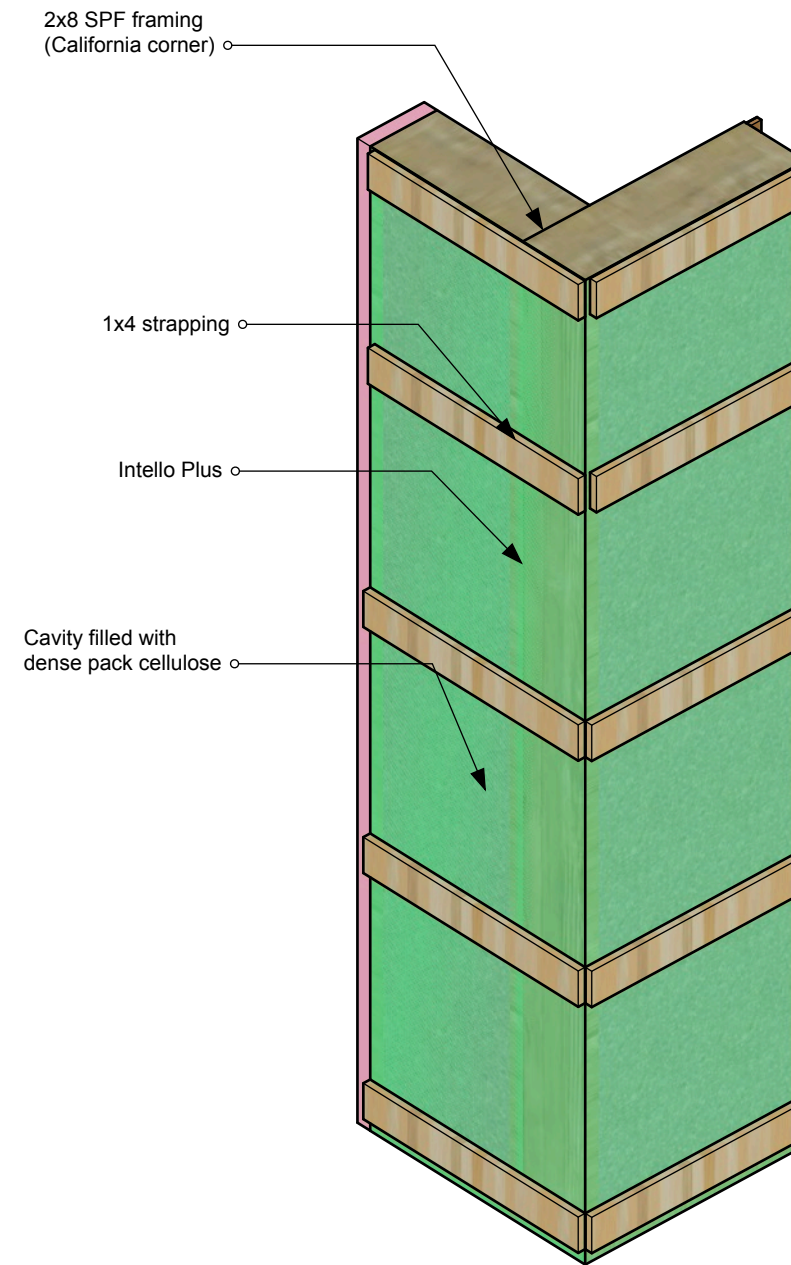
Basic Panel - Exploded View



Inside Corner Panel - Overview

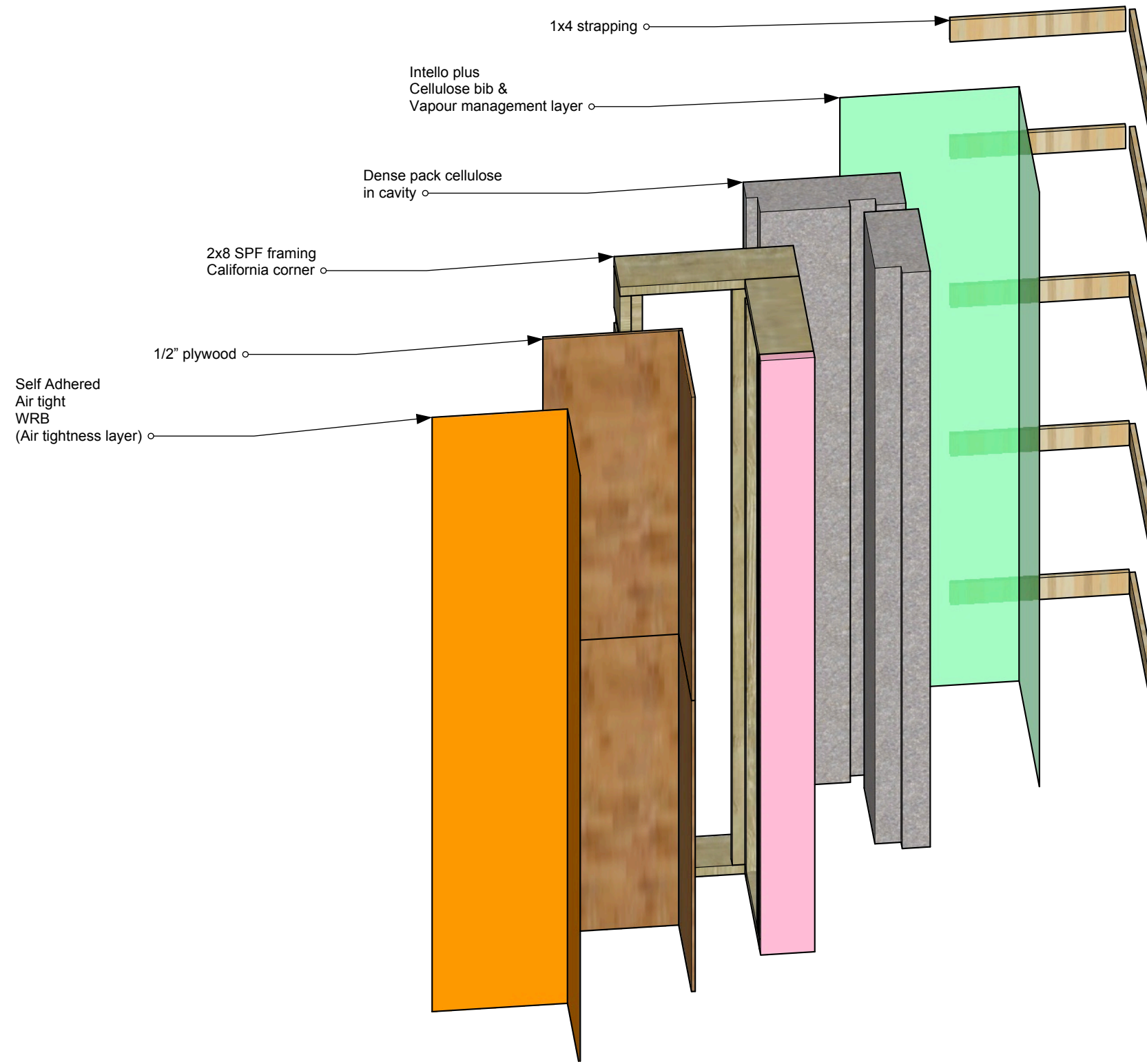


EXTERIOR VIEW

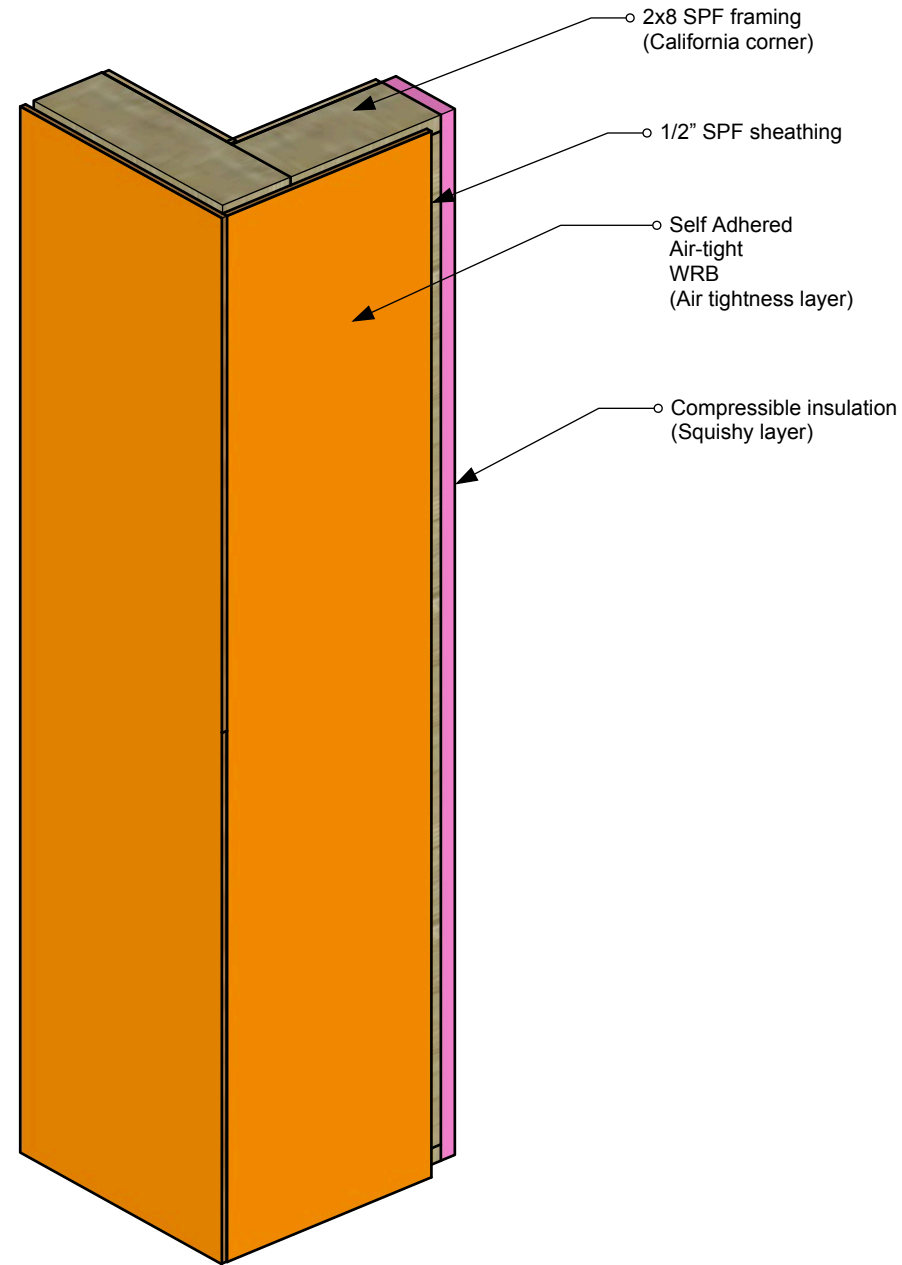


INTERIOR VIEW

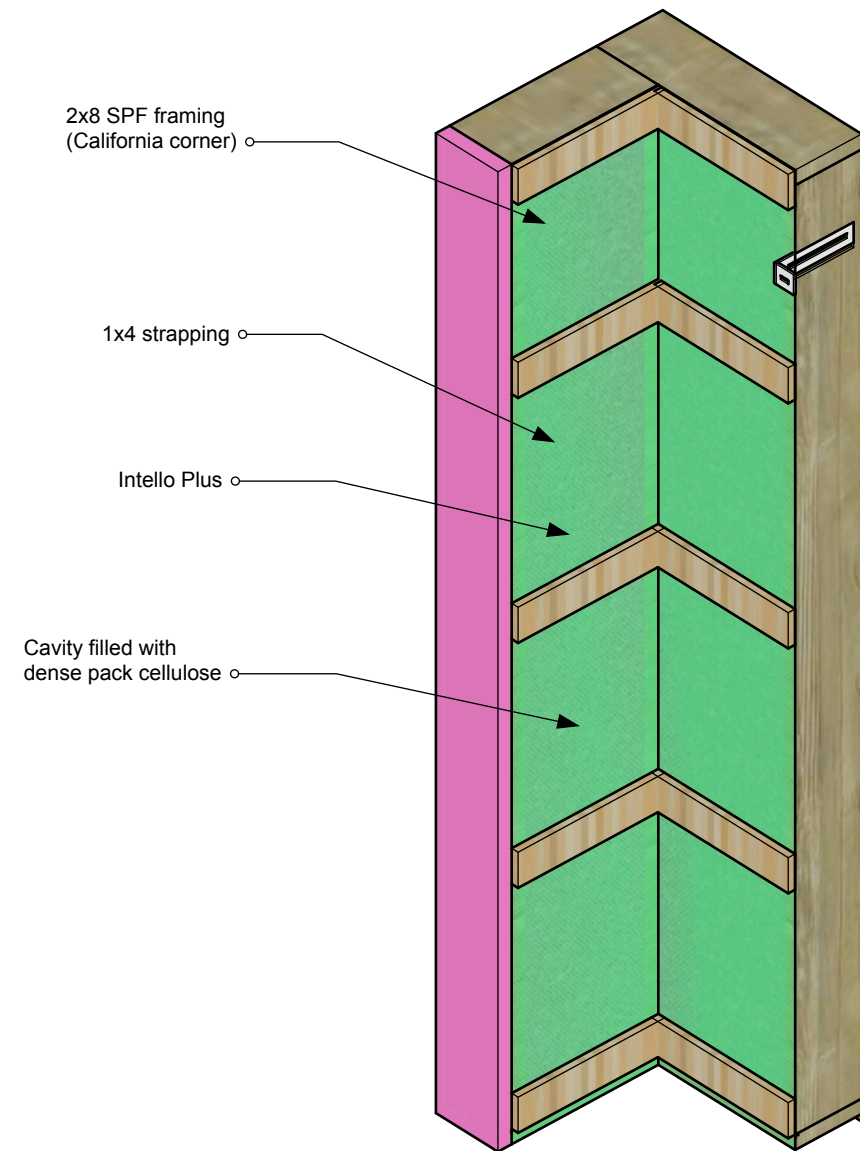
Inside Corner Panel - Exploded View



Outside Corner Panel - Overview

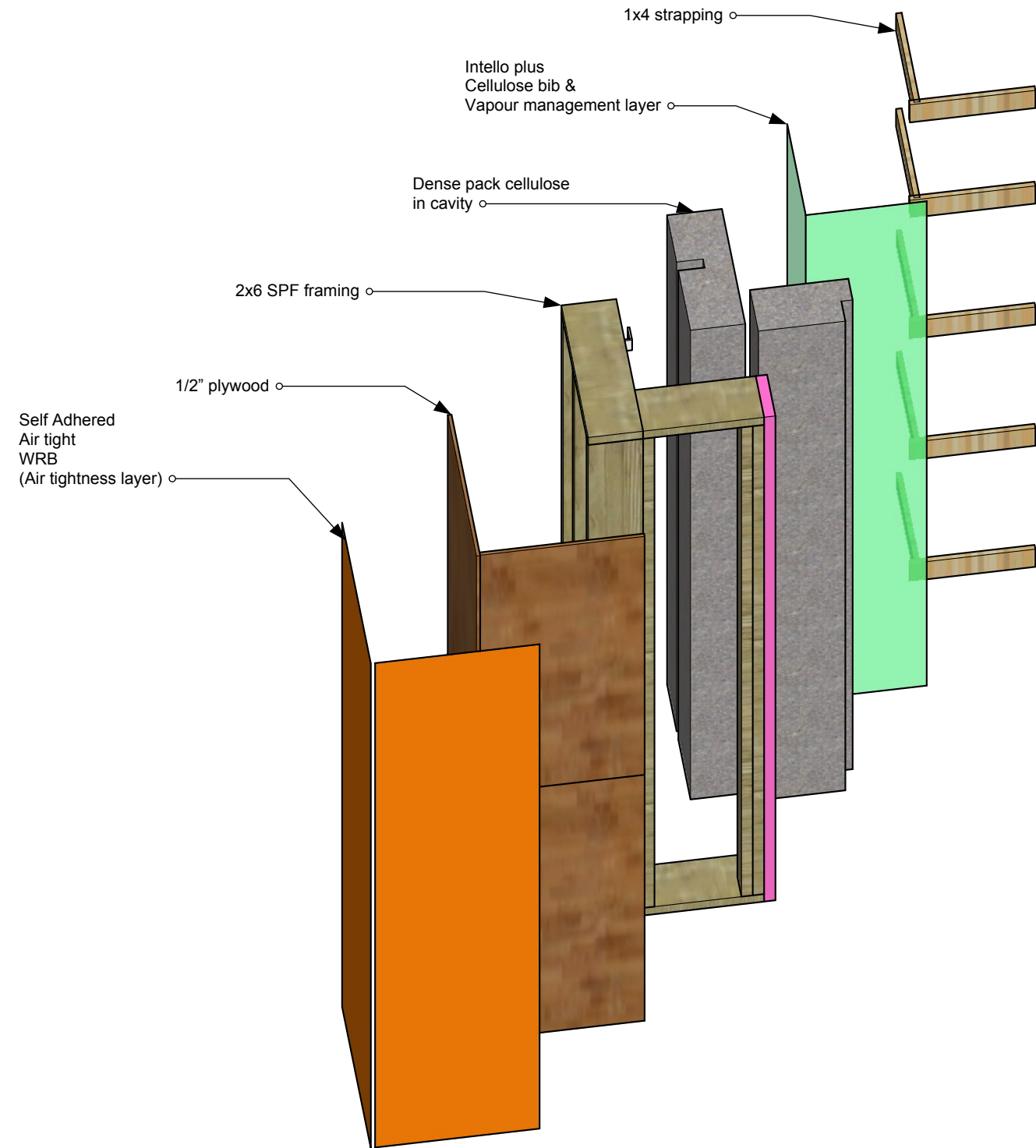


EXTERIOR VIEW

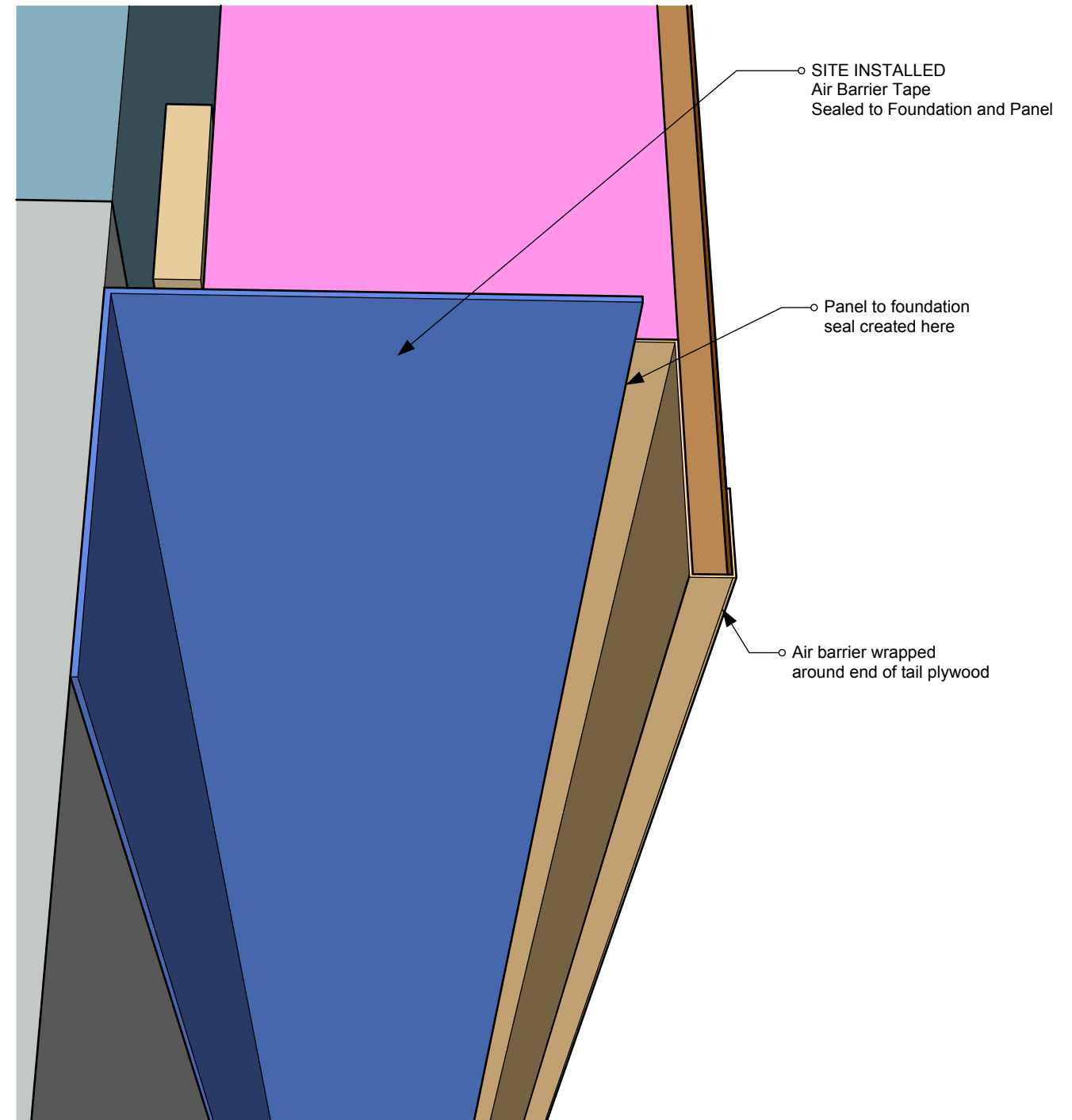
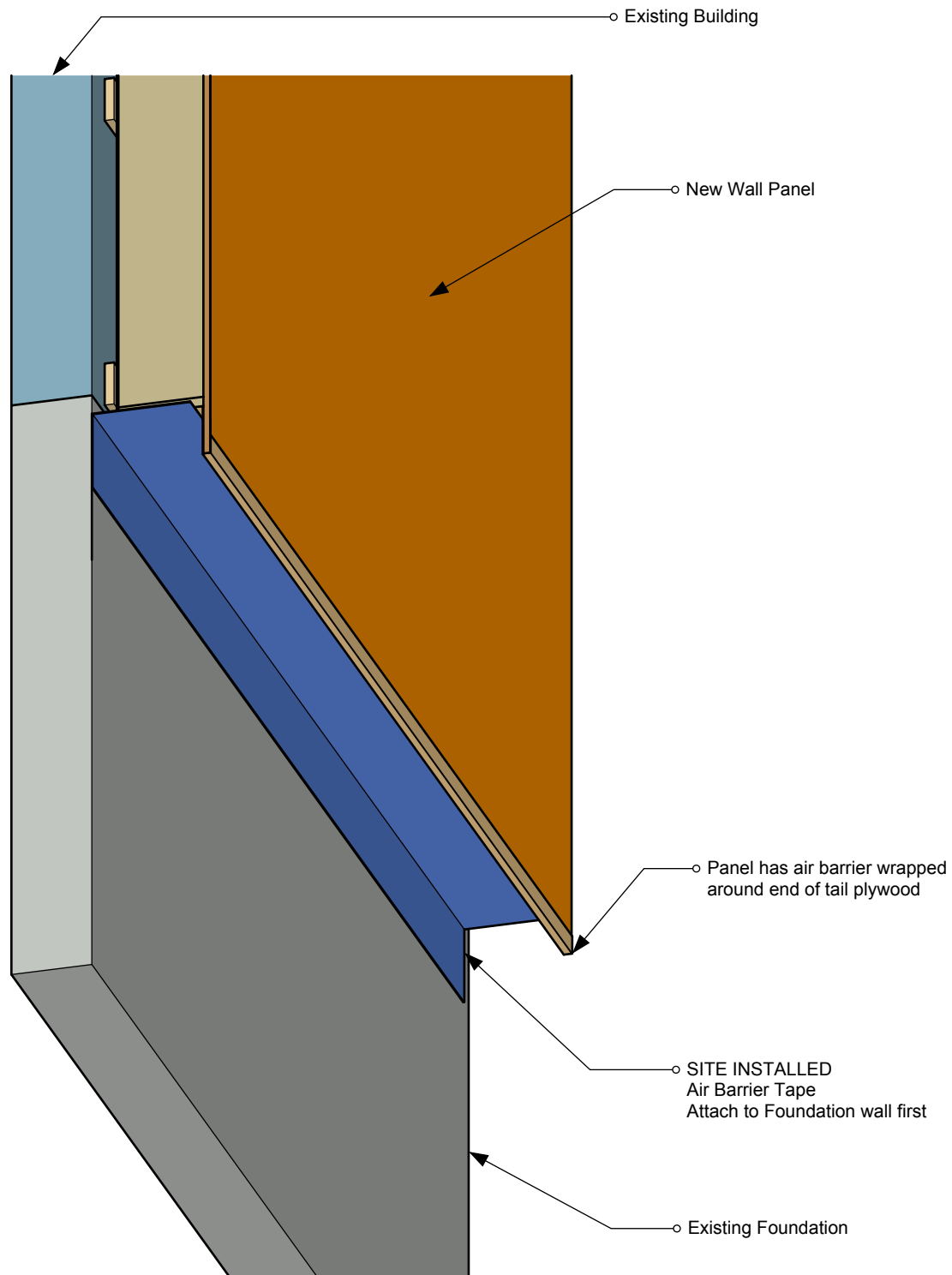


INTERIOR VIEW

Outside Corner Panel - Exploded View

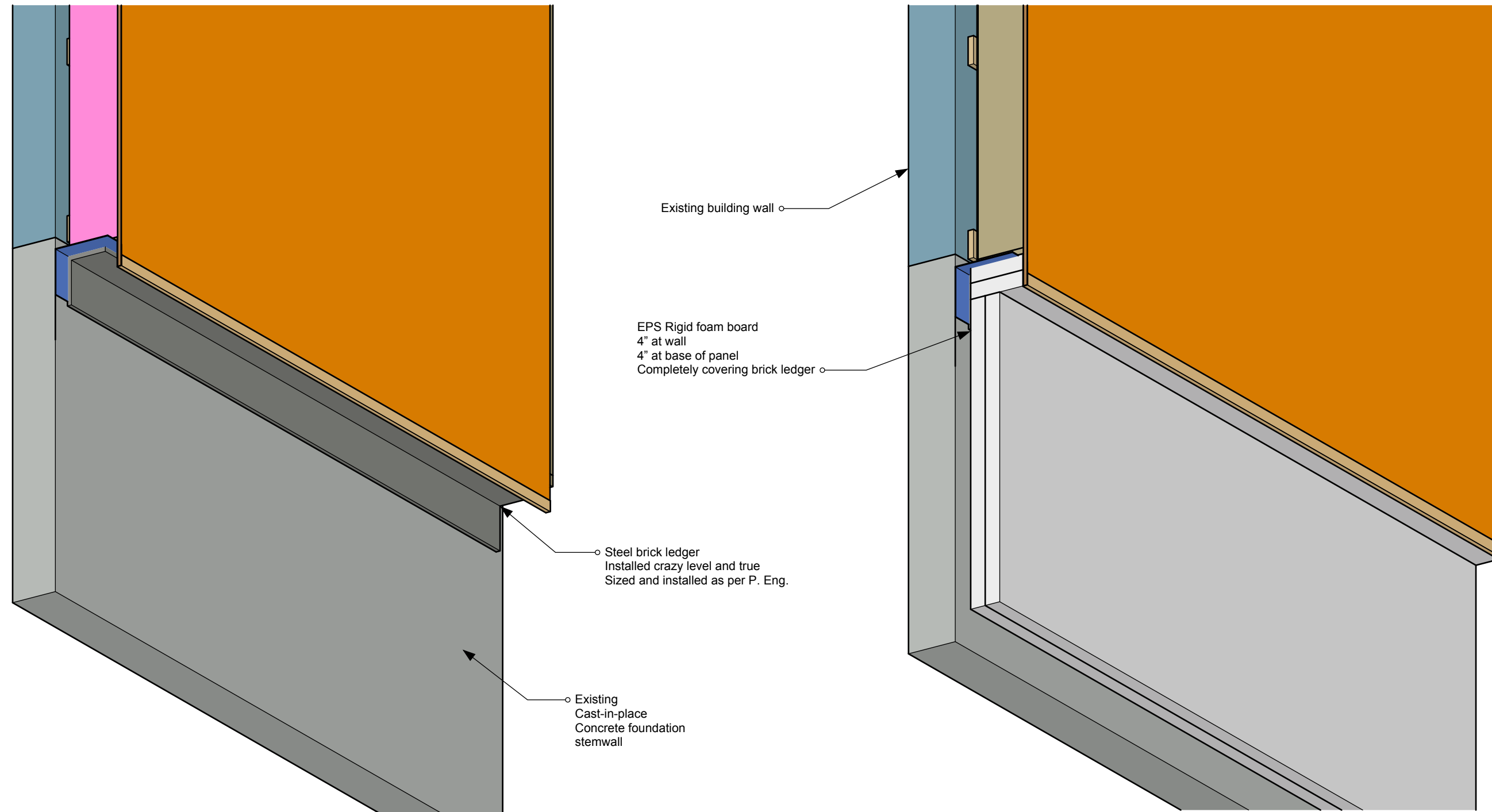


Foundation Attachment - Air Sealing



Foundation Attachment - Brick Ledger

"Brick Ledger" style continuous ledger for panel support

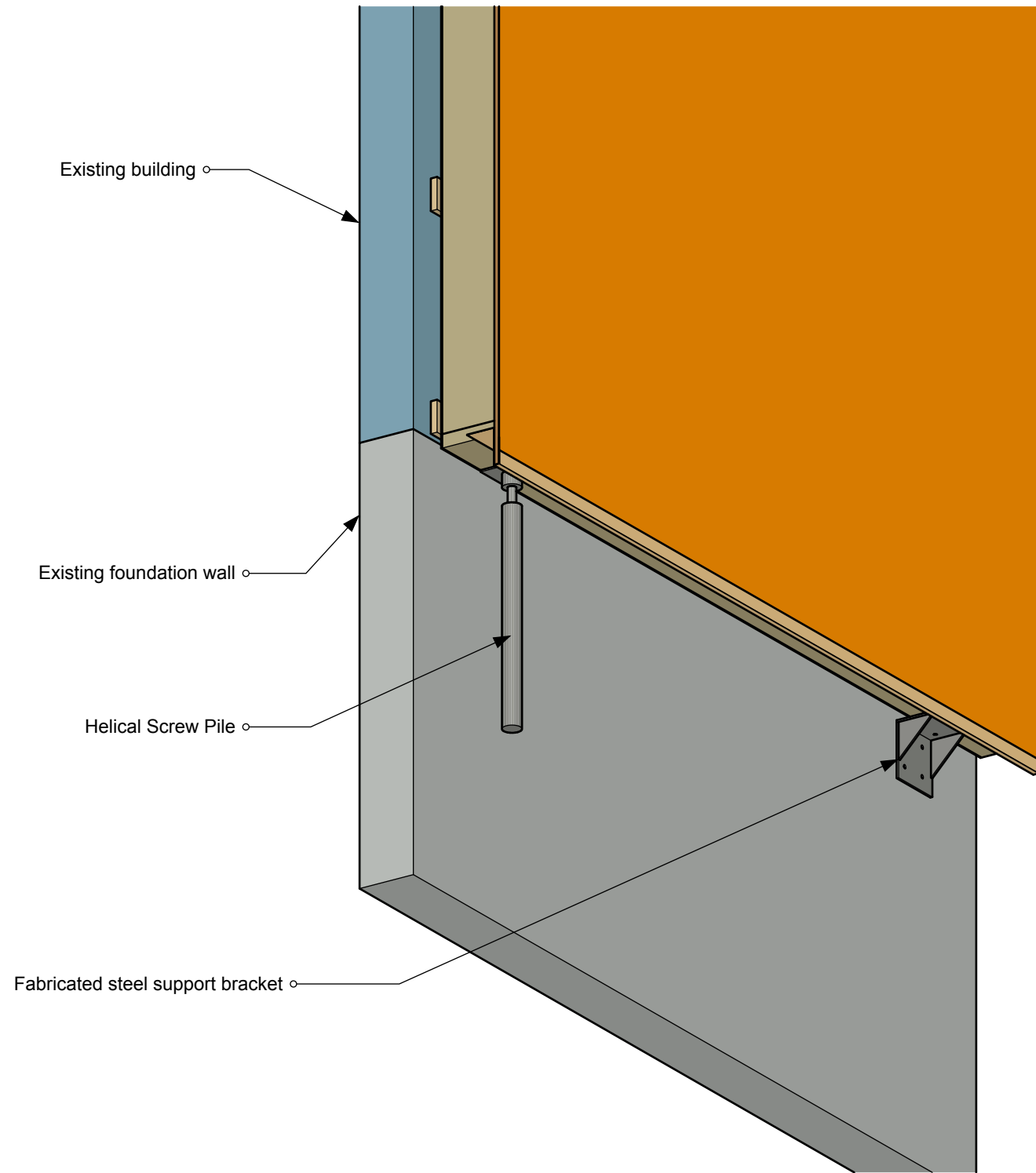


BEFORE SITE INSULATION

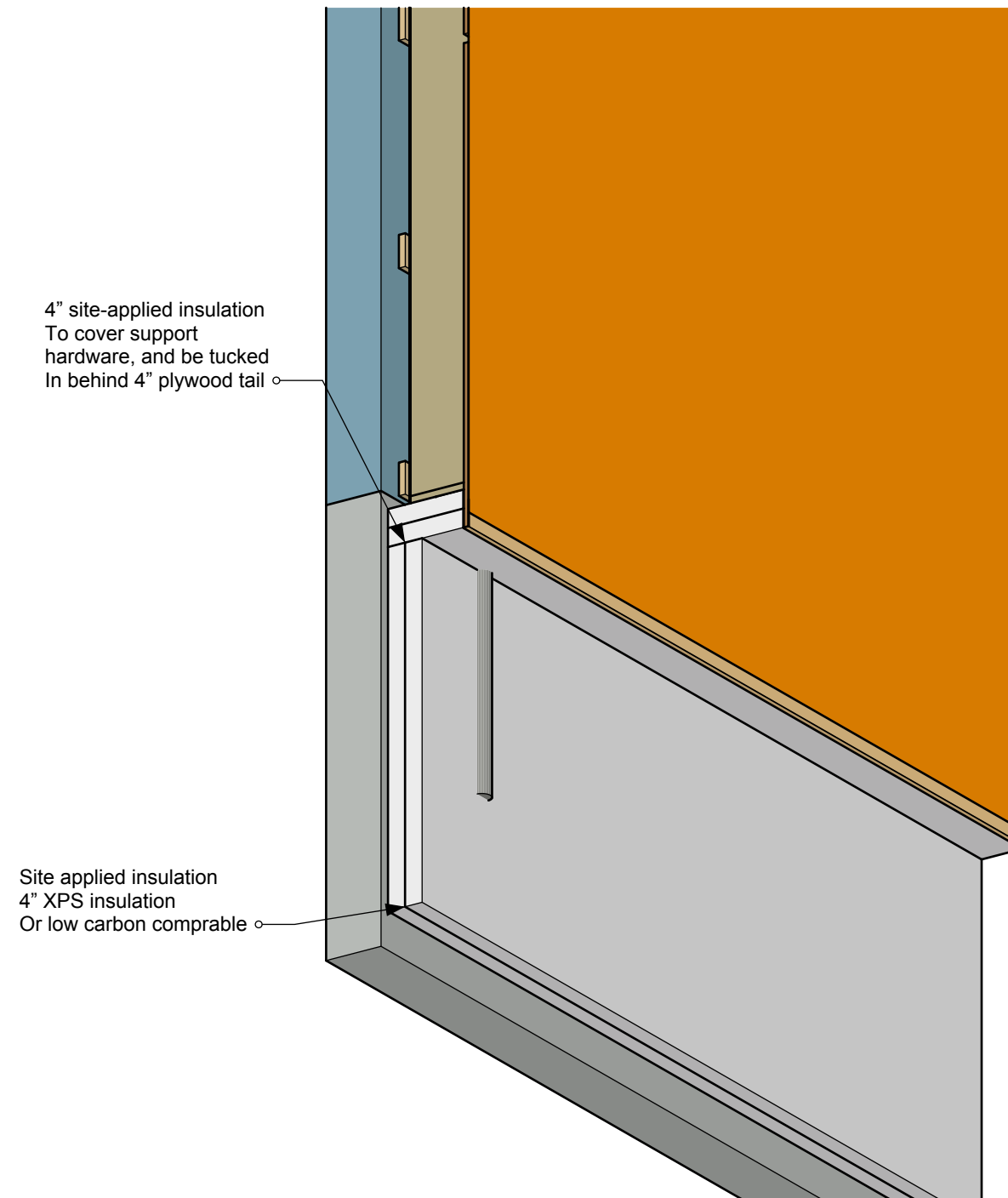
AFTER SITE INSULATION

Alternate Foundation Attachment - Pile or Bracket

In case "brick ledger" cannot work



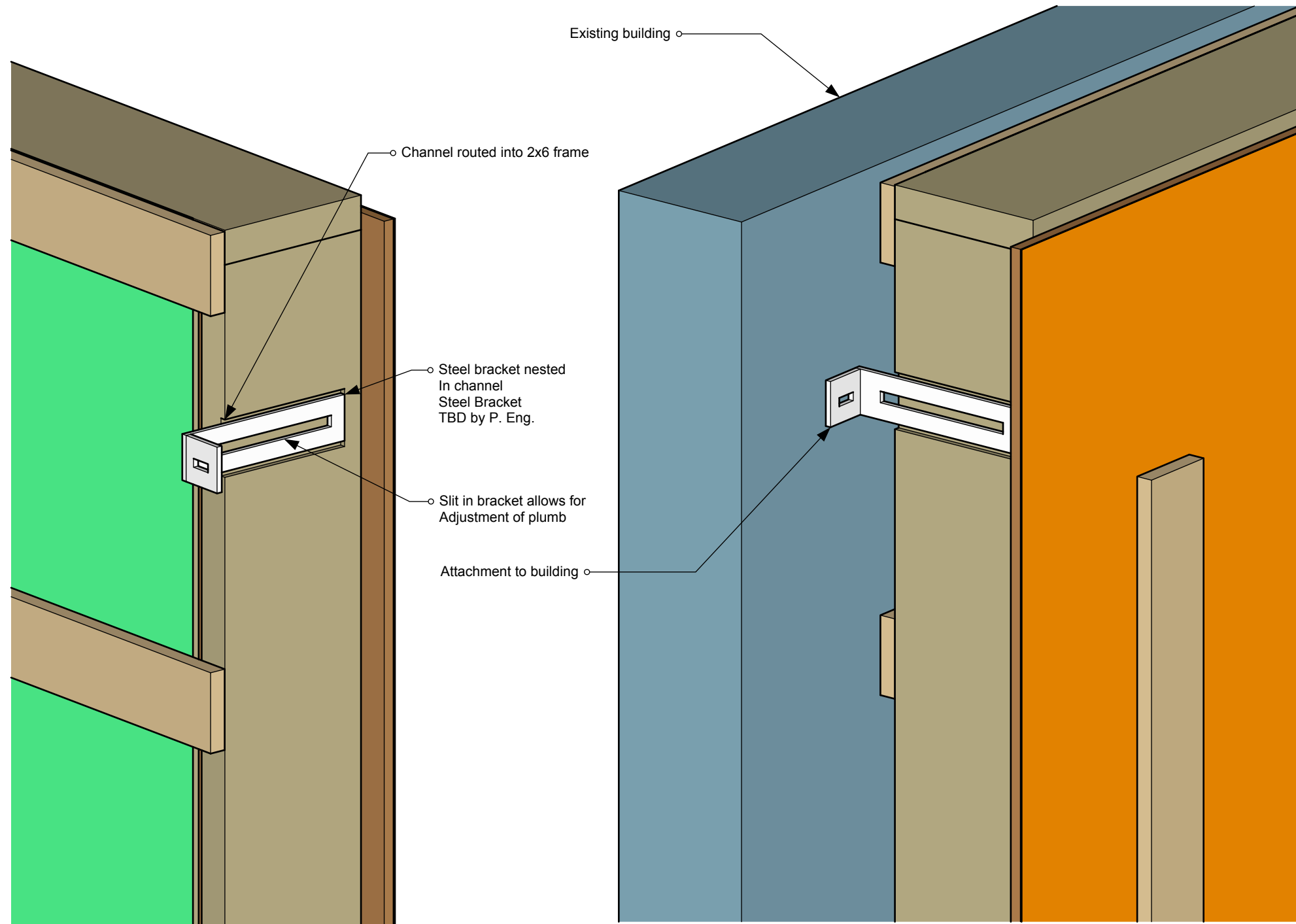
BEFORE SITE INSULATION



AFTER SITE INSULATION

Attach to Existing Building

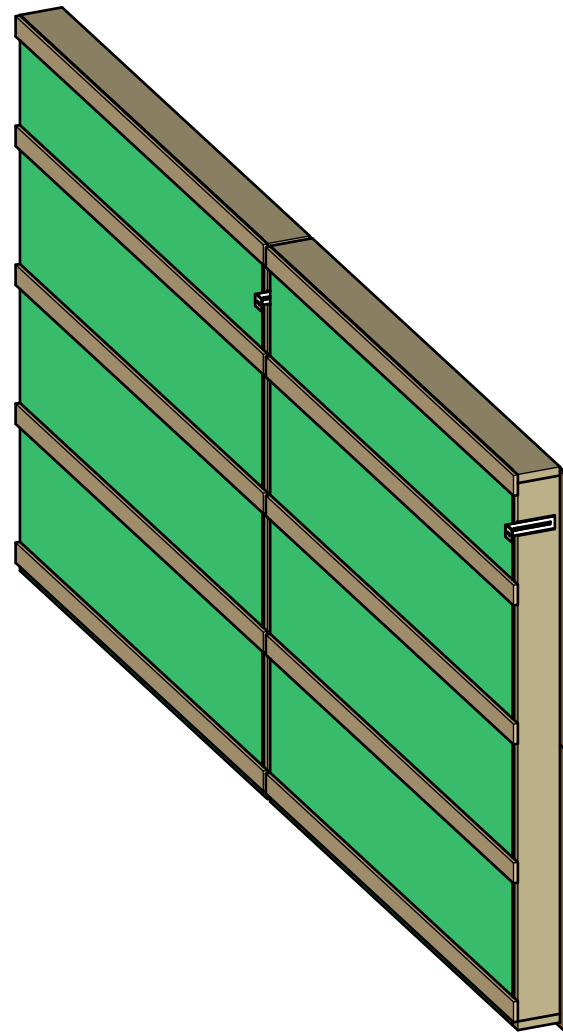
Bracket to attach individual panels to existing



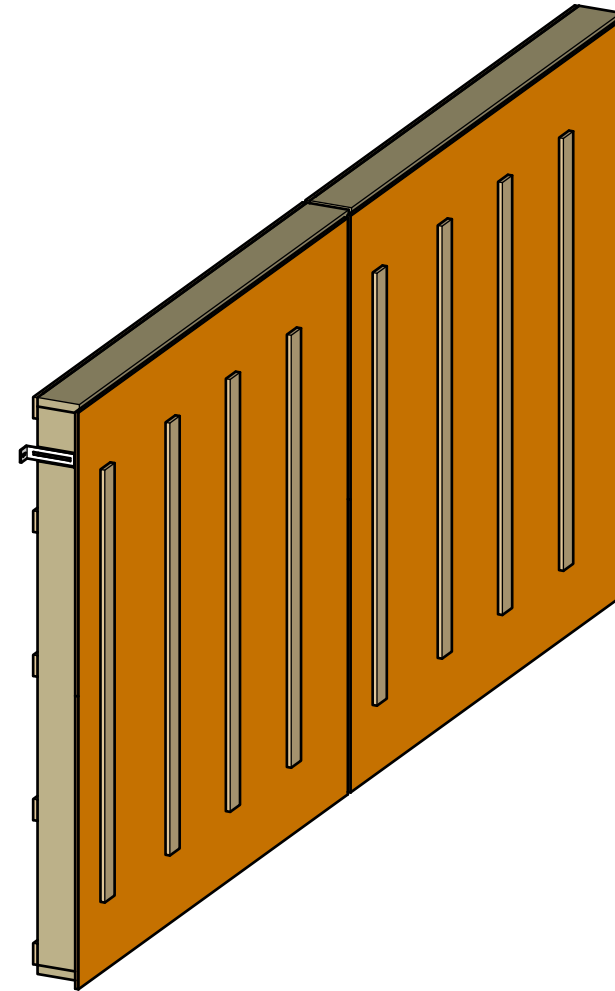
INTERIOR VIEW

EXTERIOR VIEW

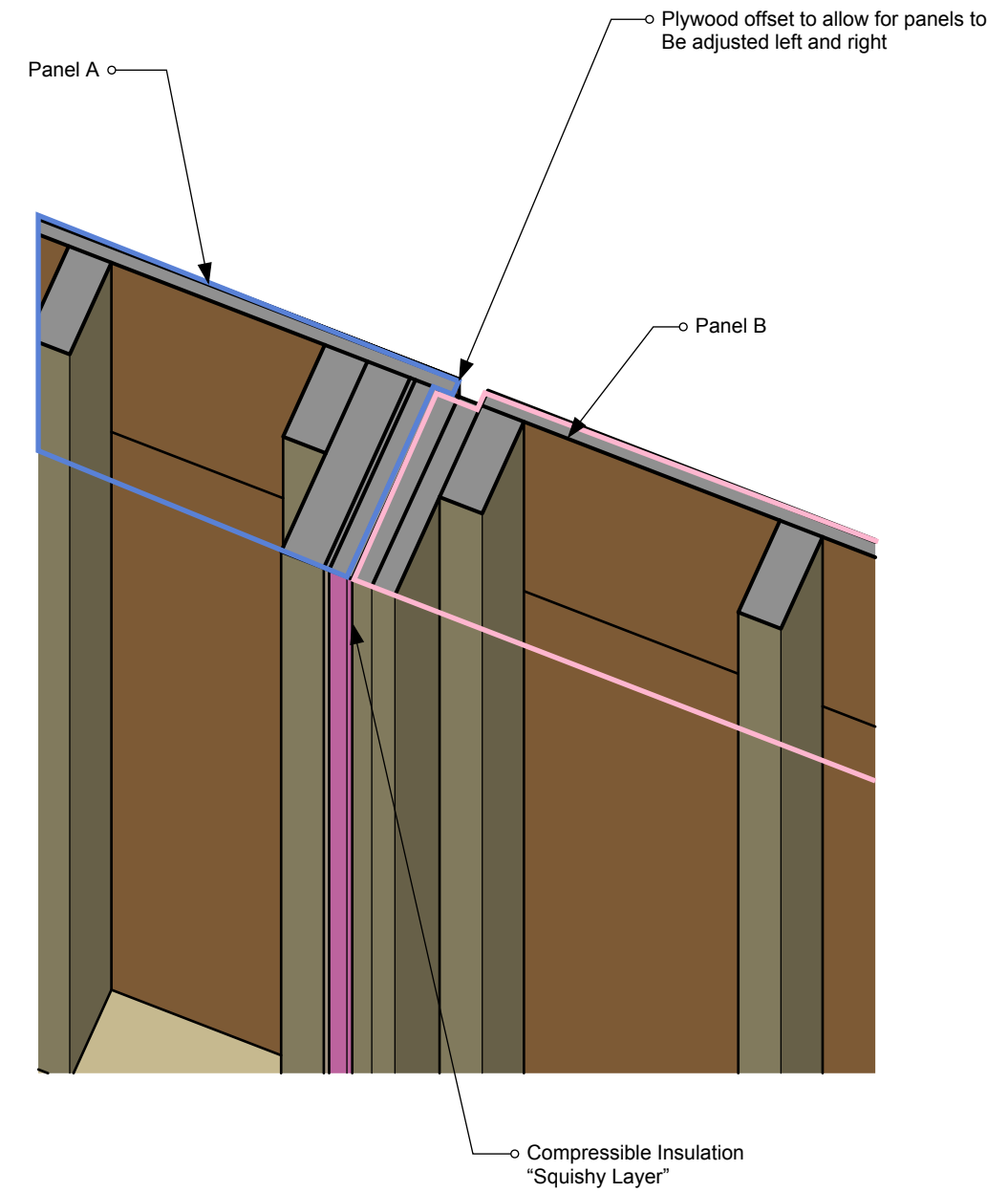
Vertical Wall Joints



INTERIOR VIEW

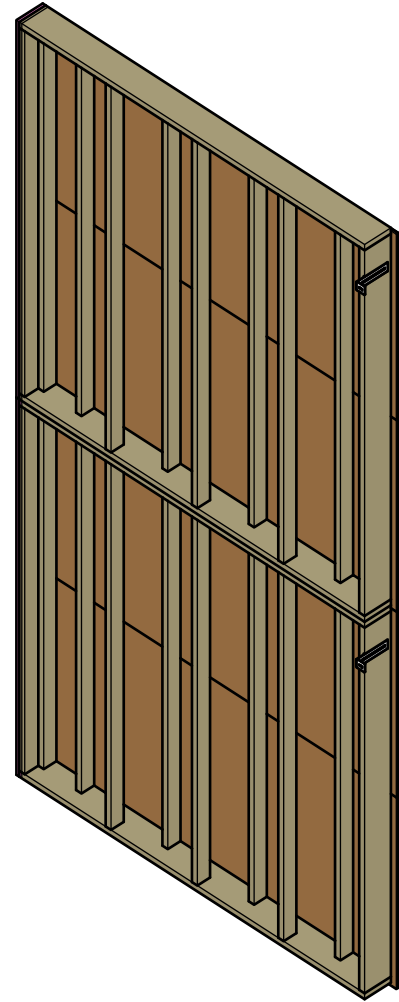


EXTERIOR VIEW

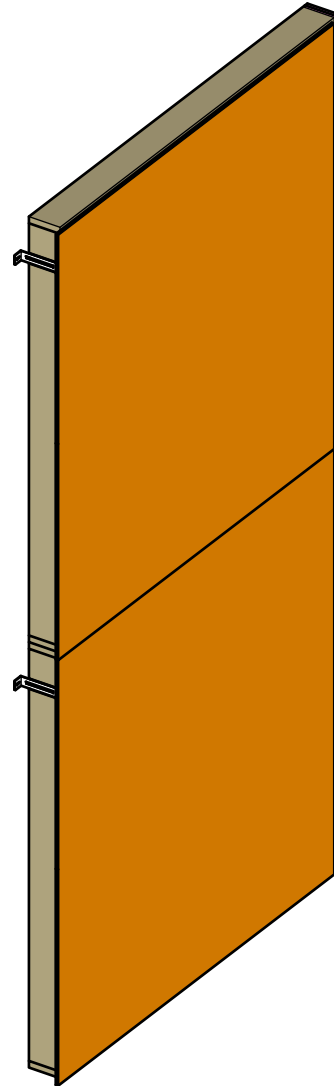


SECTION VIEW

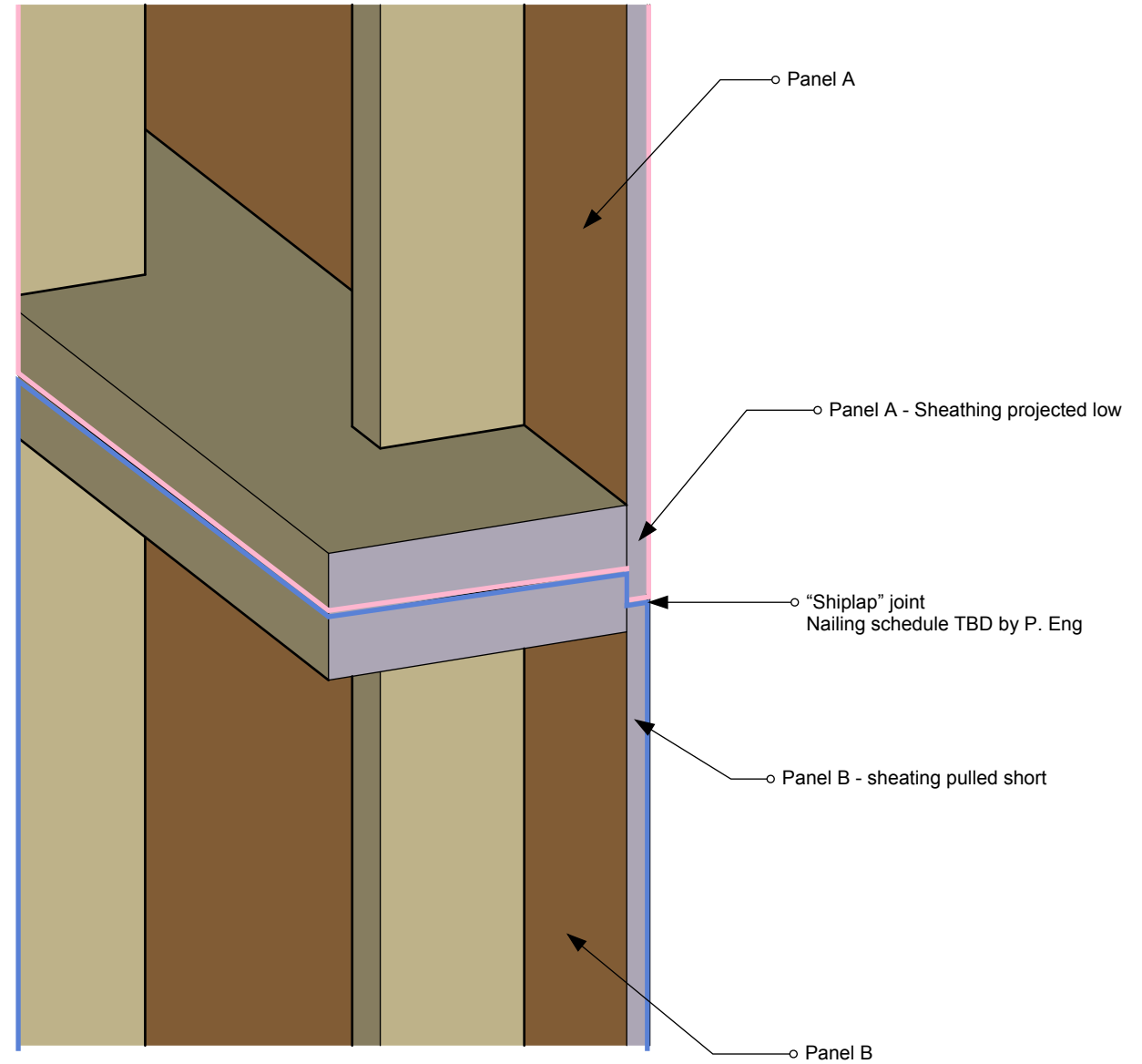
Horizontal Wall Joins



INTERIOR VIEW

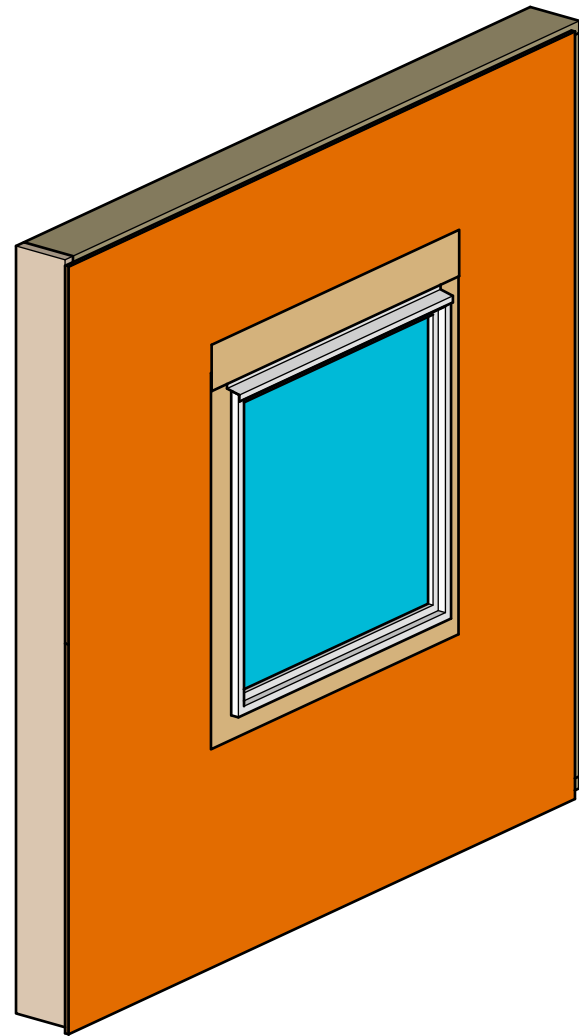


EXTERIOR VIEW



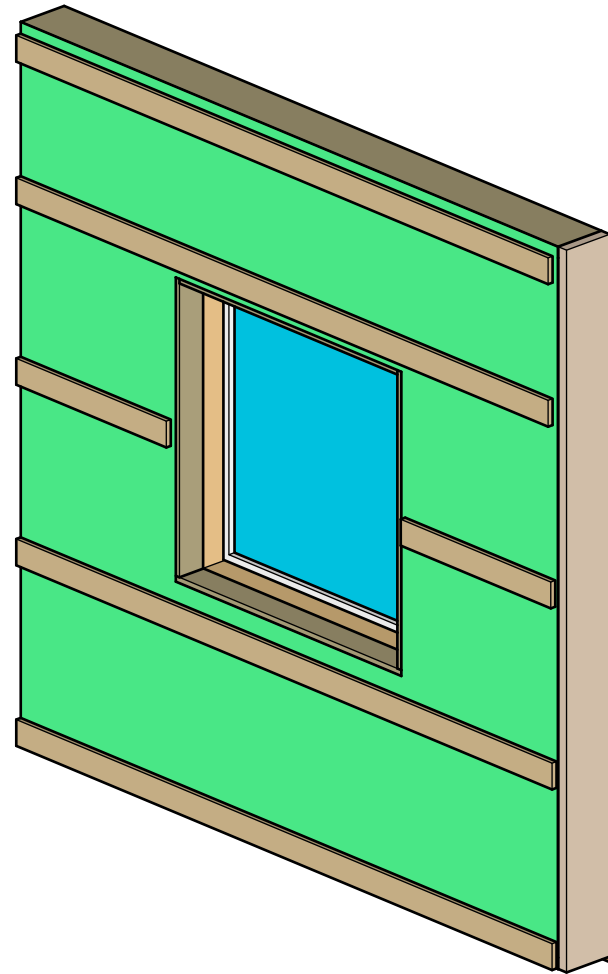
SECTION VIEW

Window Panel

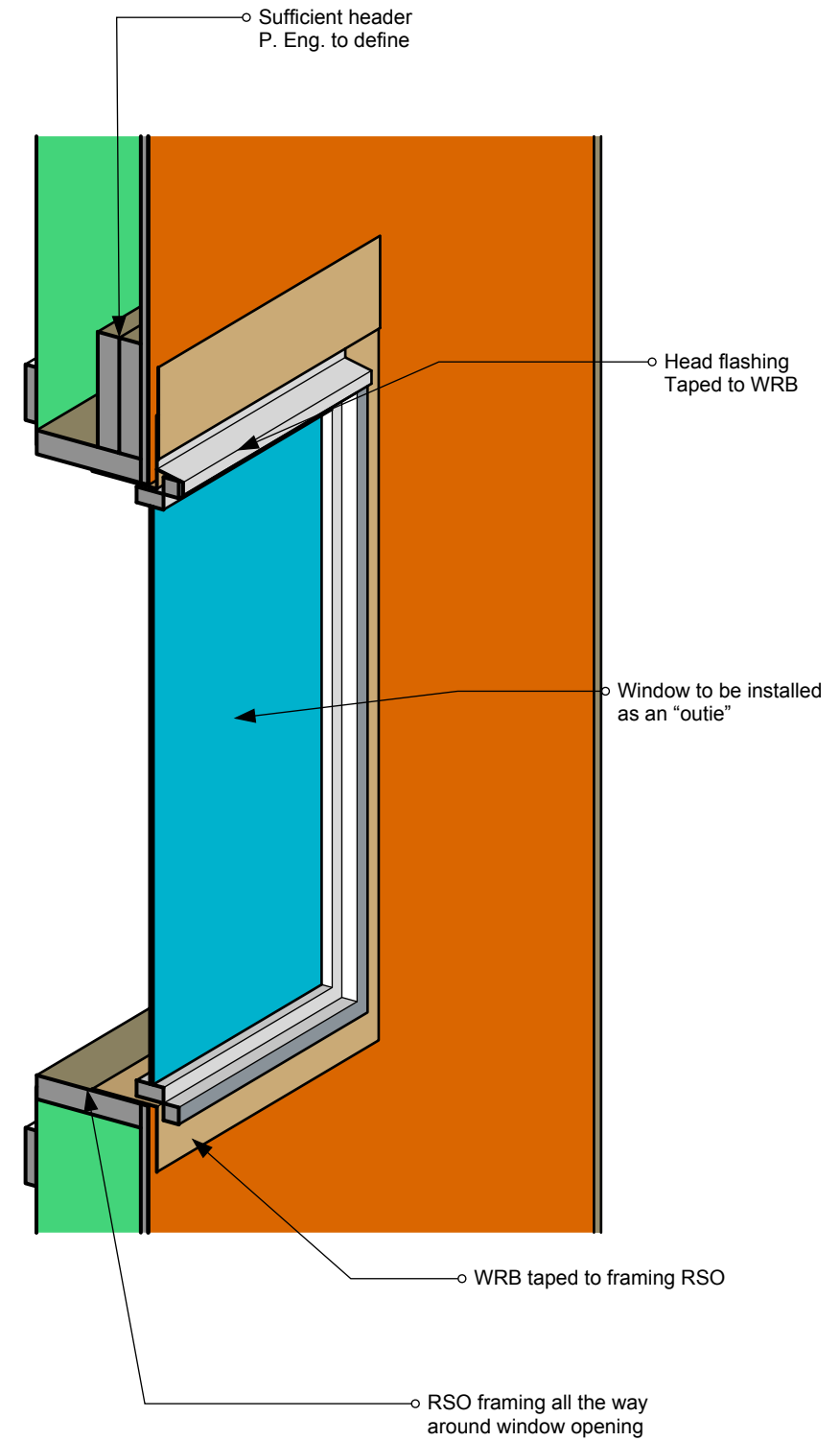


**PANEL
EXTERIOR VIEW**

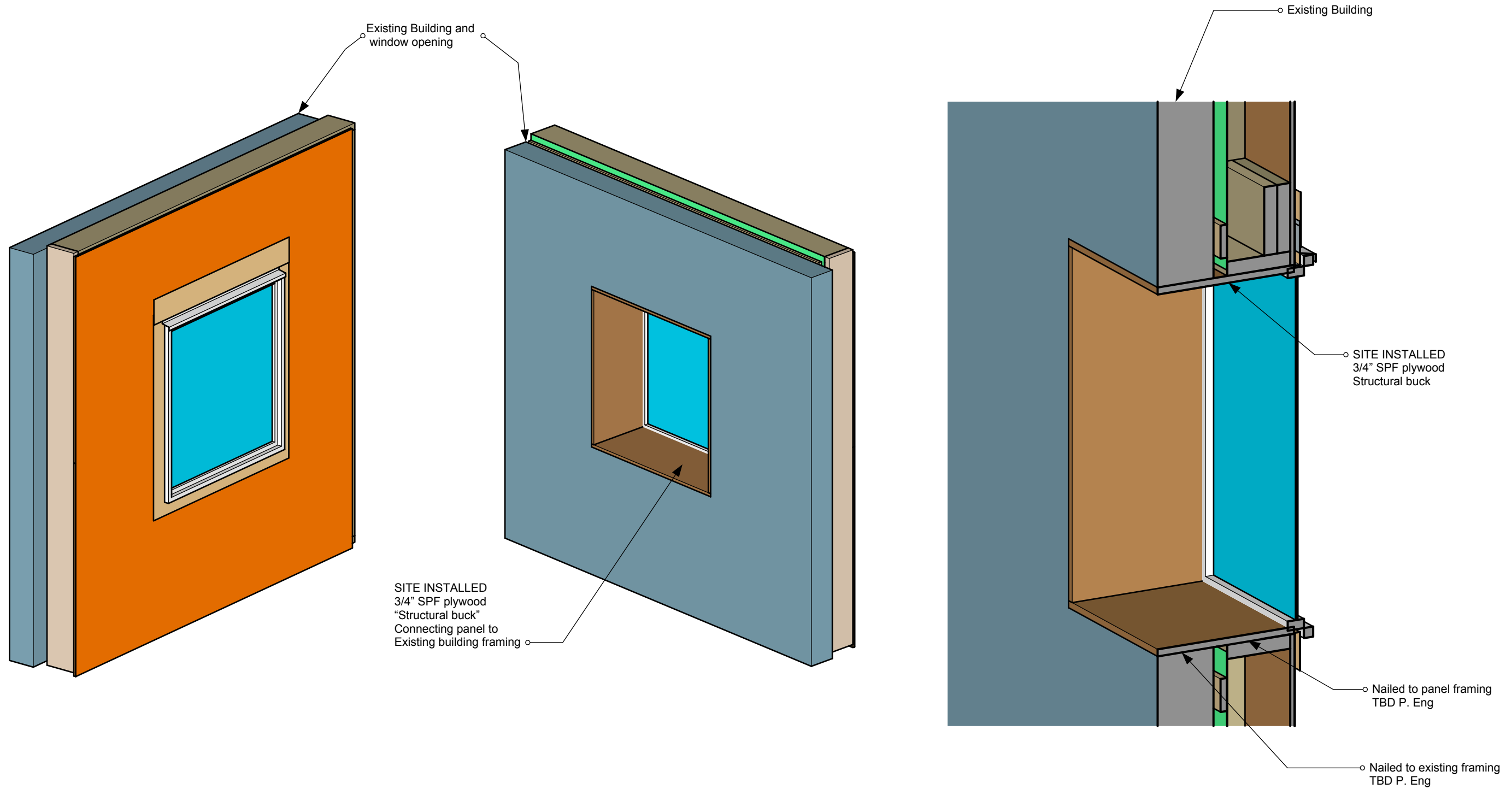
Window installed in factory
Window installed as an
"outie" to minimize how
much window sill there is
exposed to the rain



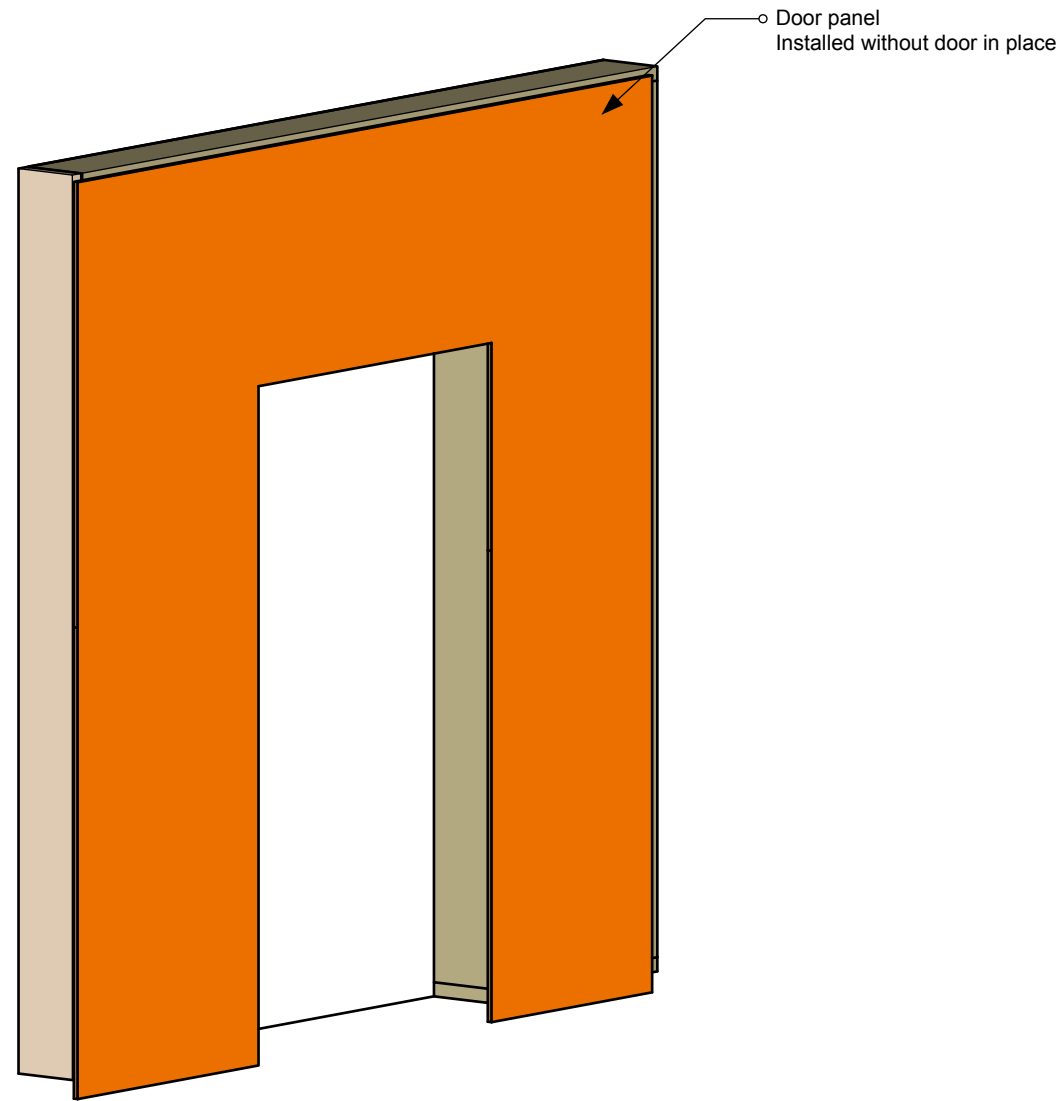
**PANEL
EXTERIOR VIEW**



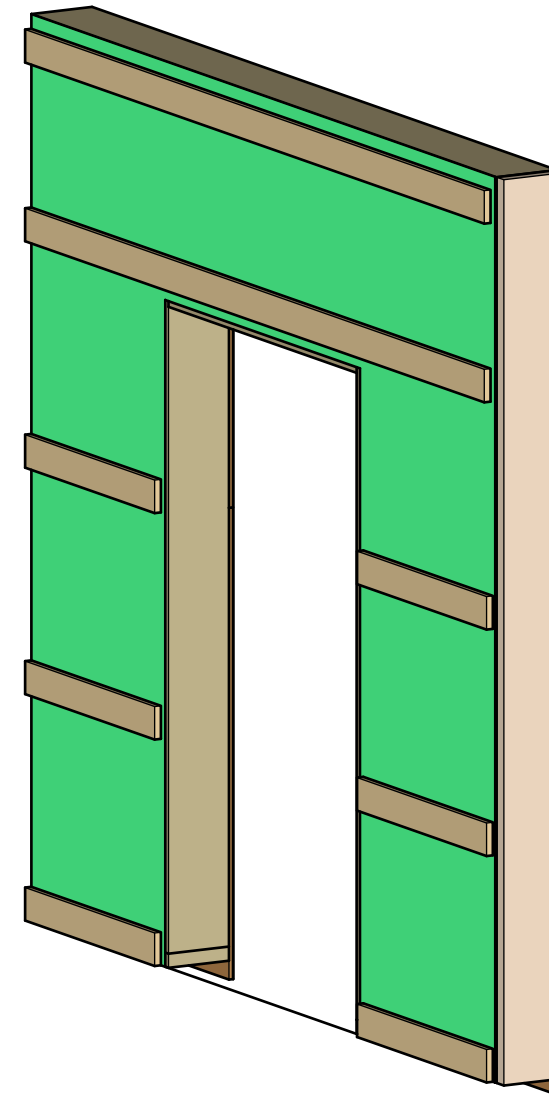
Window Panel Install



Door Penetration Panel

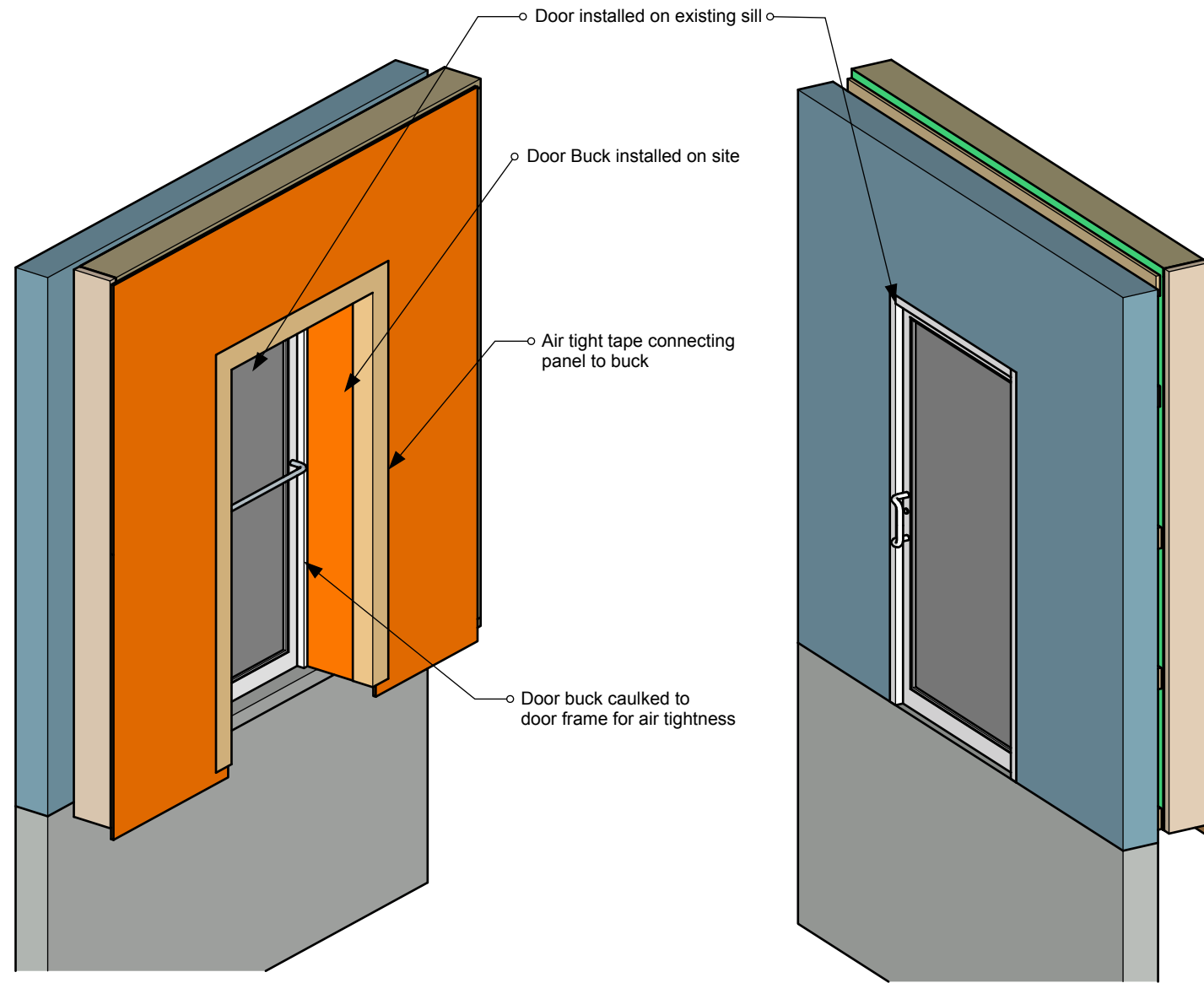


EXTERIOR VIEW



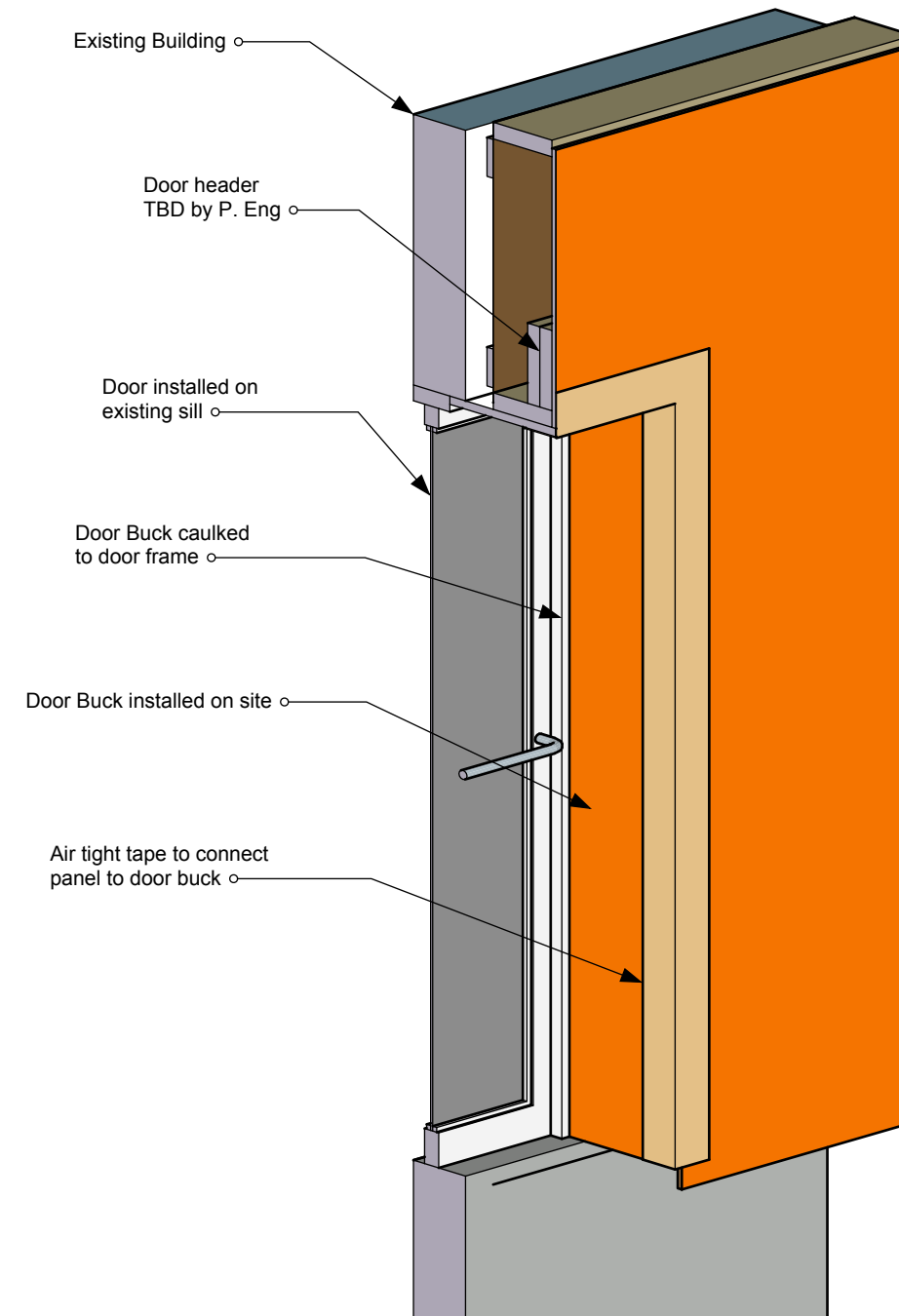
INTERIOR VIEW

Door Penetration Panel Installed



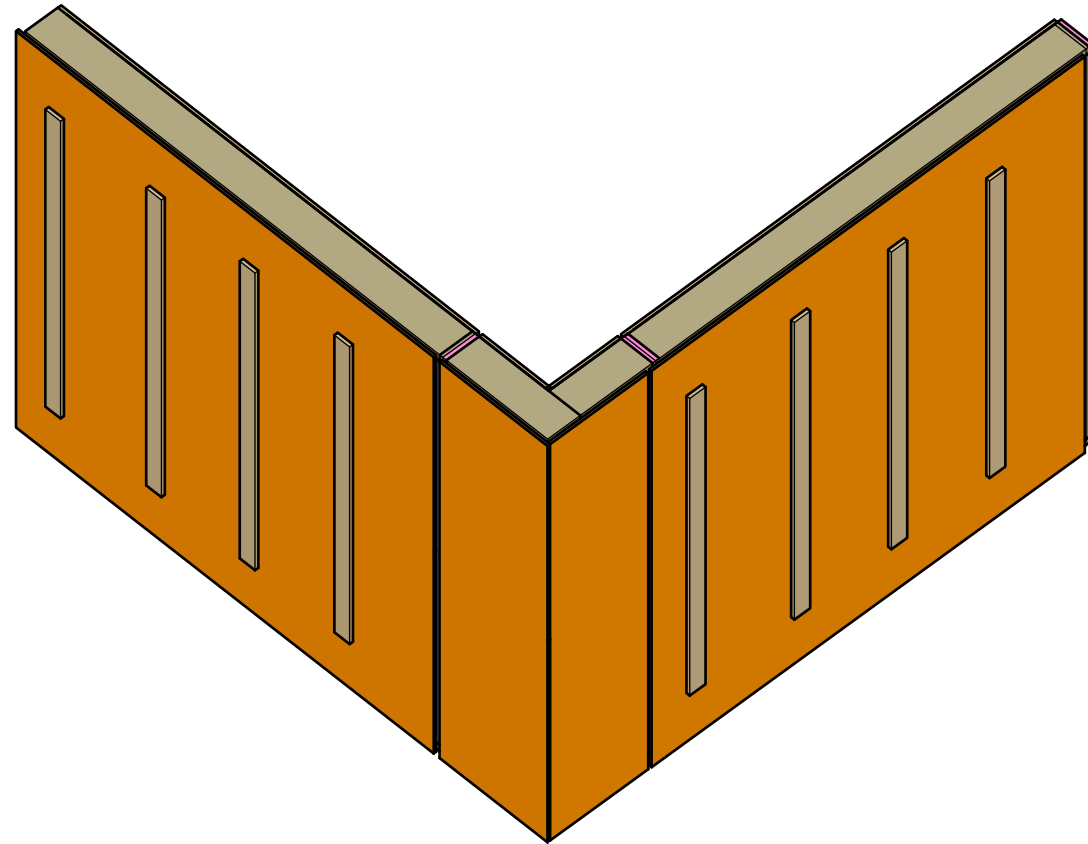
EXTERIOR VIEW

INTERIOR VIEW

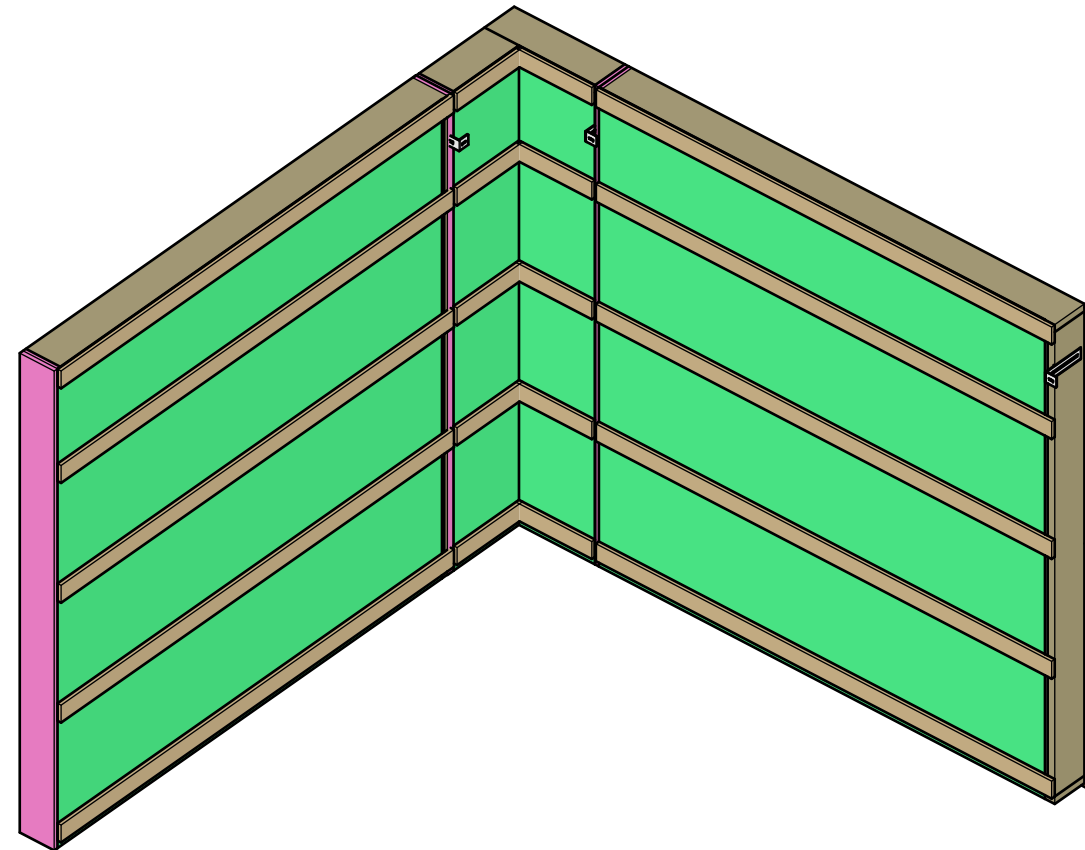


SECTION VIEW

Outside Corner Installed

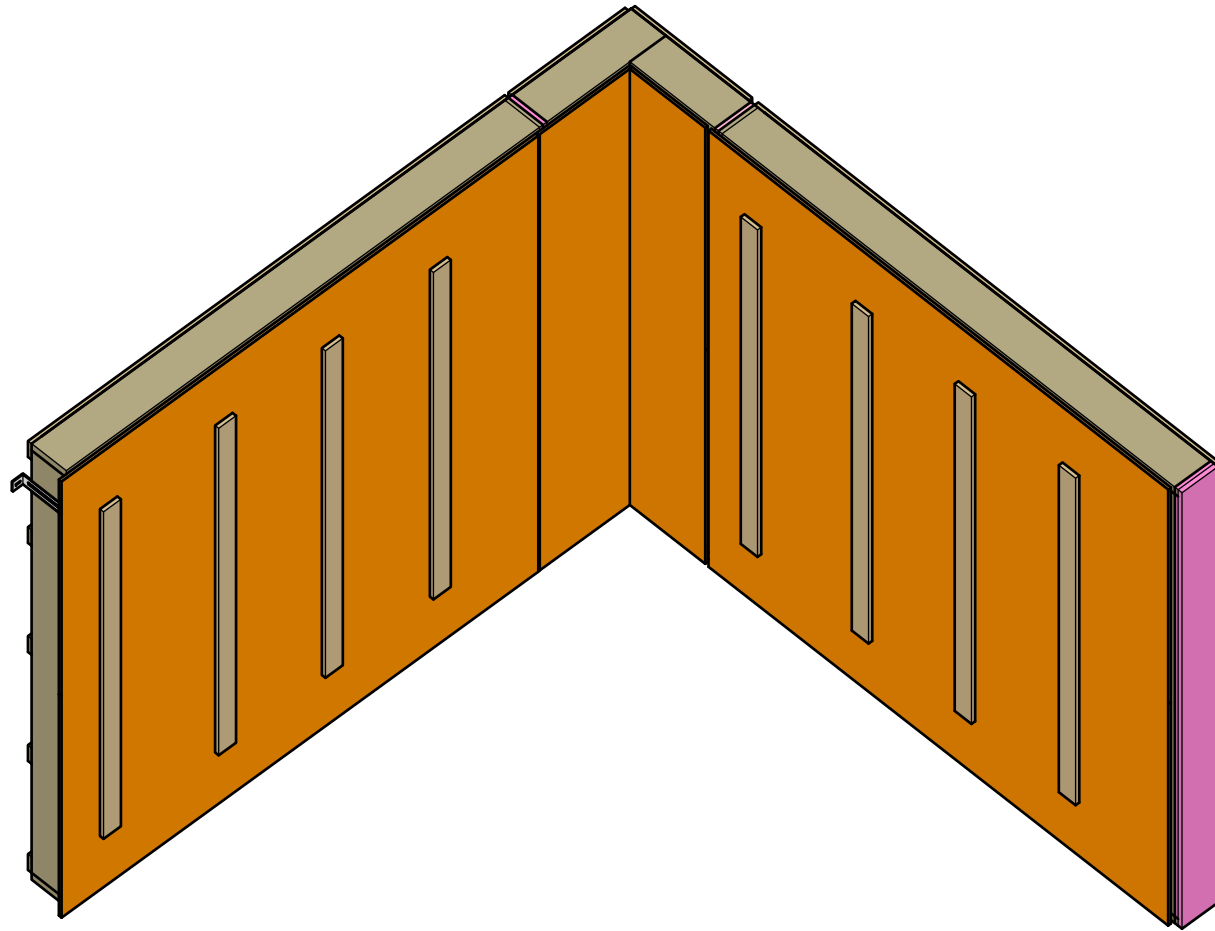


EXTERIOR VIEW

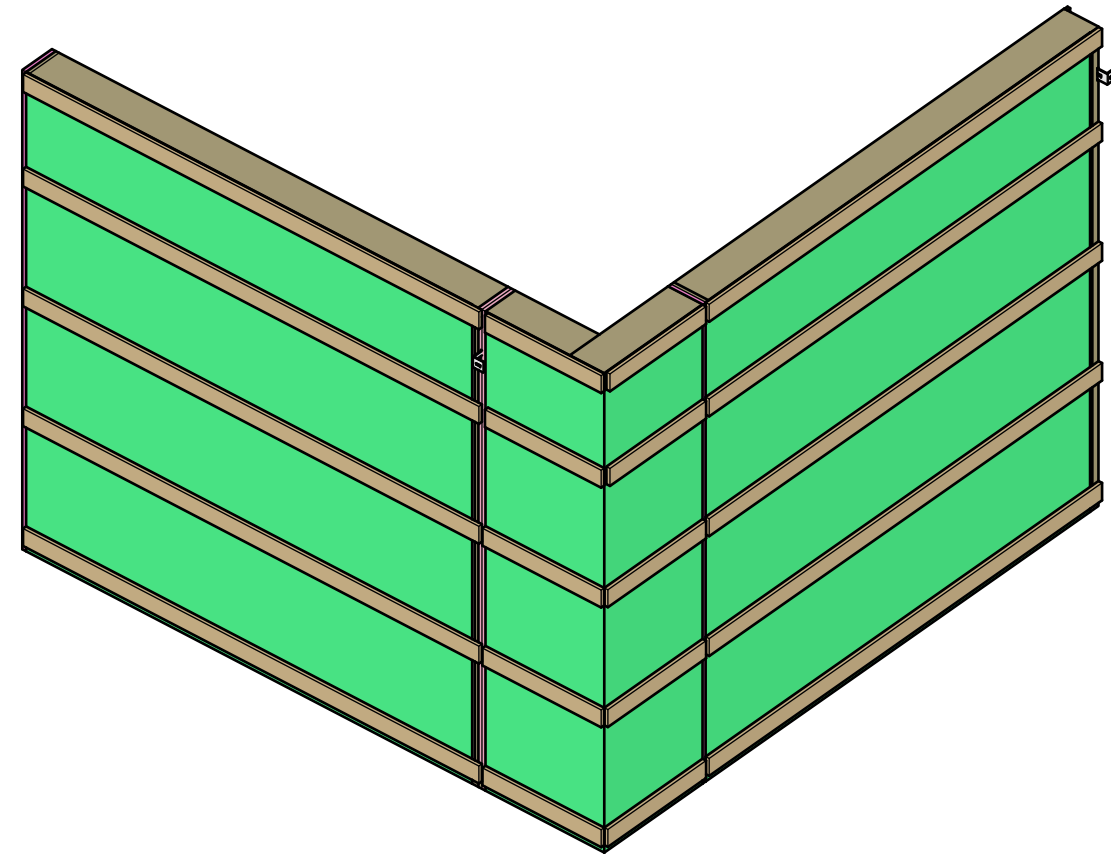


INTERIOR VIEW

Inside Corner Installed



EXTERIOR VIEW



INTERIOR VIEW