

W1

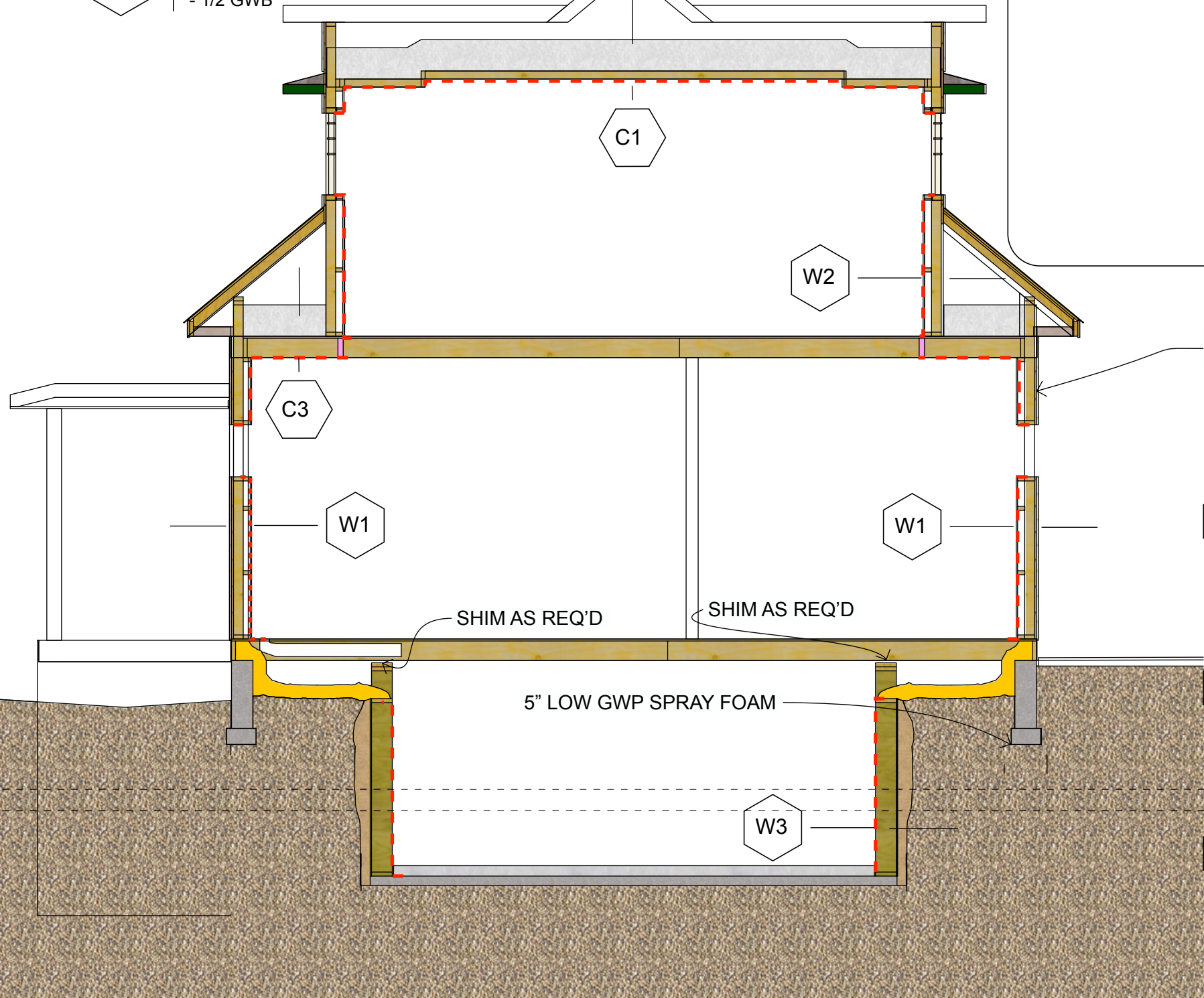
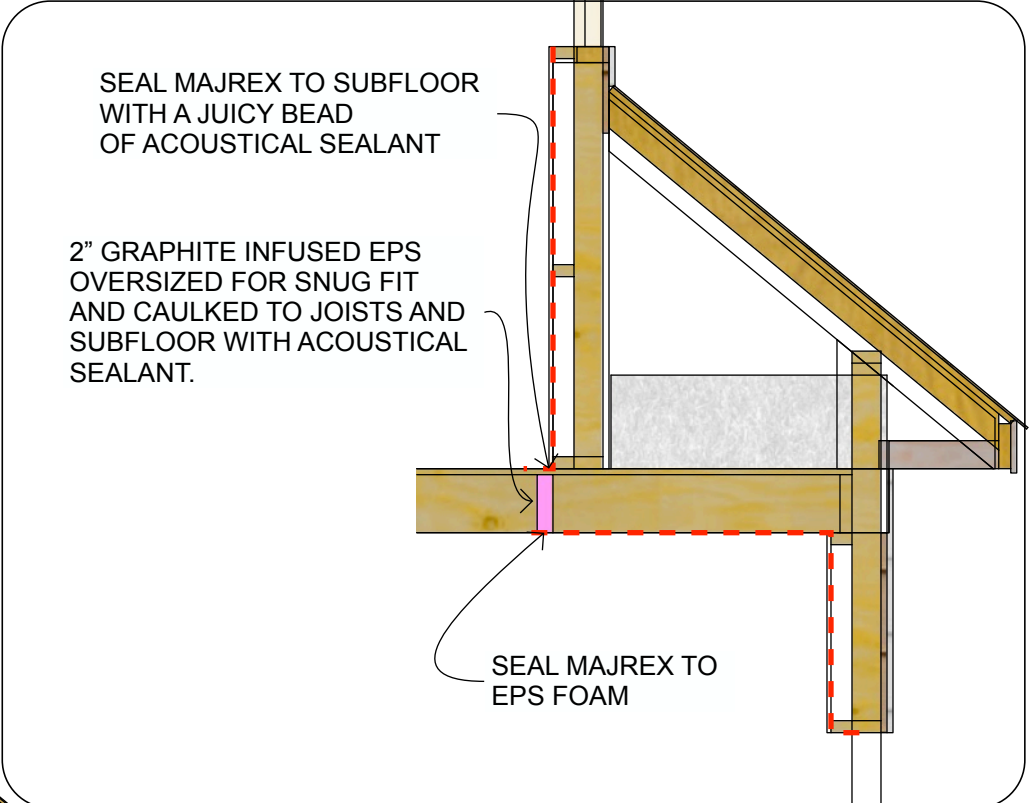
- ORIGINAL SIDING
- ORIGINAL 3/4" SPF SHEATHING
- 2X4 16" OC
- 2X3 HORIZONTAL ON EDGE 24" OC
- DENSE PACK CELLULOSE
- SIGA MAJREX OR EQUIVALENT TAPED FOR AIR TIGHTNESS
- 1/2" GWB

W2

- CELLULOSE BLOWING MESH ON BACKSIDE OF EXISTING 2X4 WALL
- 2X4 16" OC W CELLULOSE
- 2X3 HORIZONTAL ON EDGE 24" OC WITH CELLULOSE
- SIGA MAJREX OR EQUIVALENT TAPED FOR AIR TIGHTNESS
- 1/2" GWB

W3

- 2X8 PWF RETAINING WALL, 24" OC W R28 ROXUL BATTS
- SIGA MAJREX OR EQUIVALENT TAPED FOR AIR TIGHTNESS
- 1/2" GWB



NEW WALL AFTER
REMOVAL OF ADDITION

C1

- INSULATION STOPS MIN 1" FROM ORIGINAL SHEATHING
- R 50 CELLULOSE INSTALLED FROM ABOVE
- SIGA MAJREX OR EQUIVALENT
- 1/2" GWB

C2

- ORIGINAL SHEATHING ON 2X4 RAFTERS
- 2X2 SPACERS
- 2X4 RAFTERS 24"OC
- R 28 CELLULOSE BETWEEN JOISTS
- SIGA MAJREX OR EQUIVALENT
- 1/2" GWB

C3

- R 40 CELLULOSE
- R 28 CELLULOSE BETWEEN JOISTS
- SIGA MAJREX OR EQUIVALENT
- 1/2" GWB

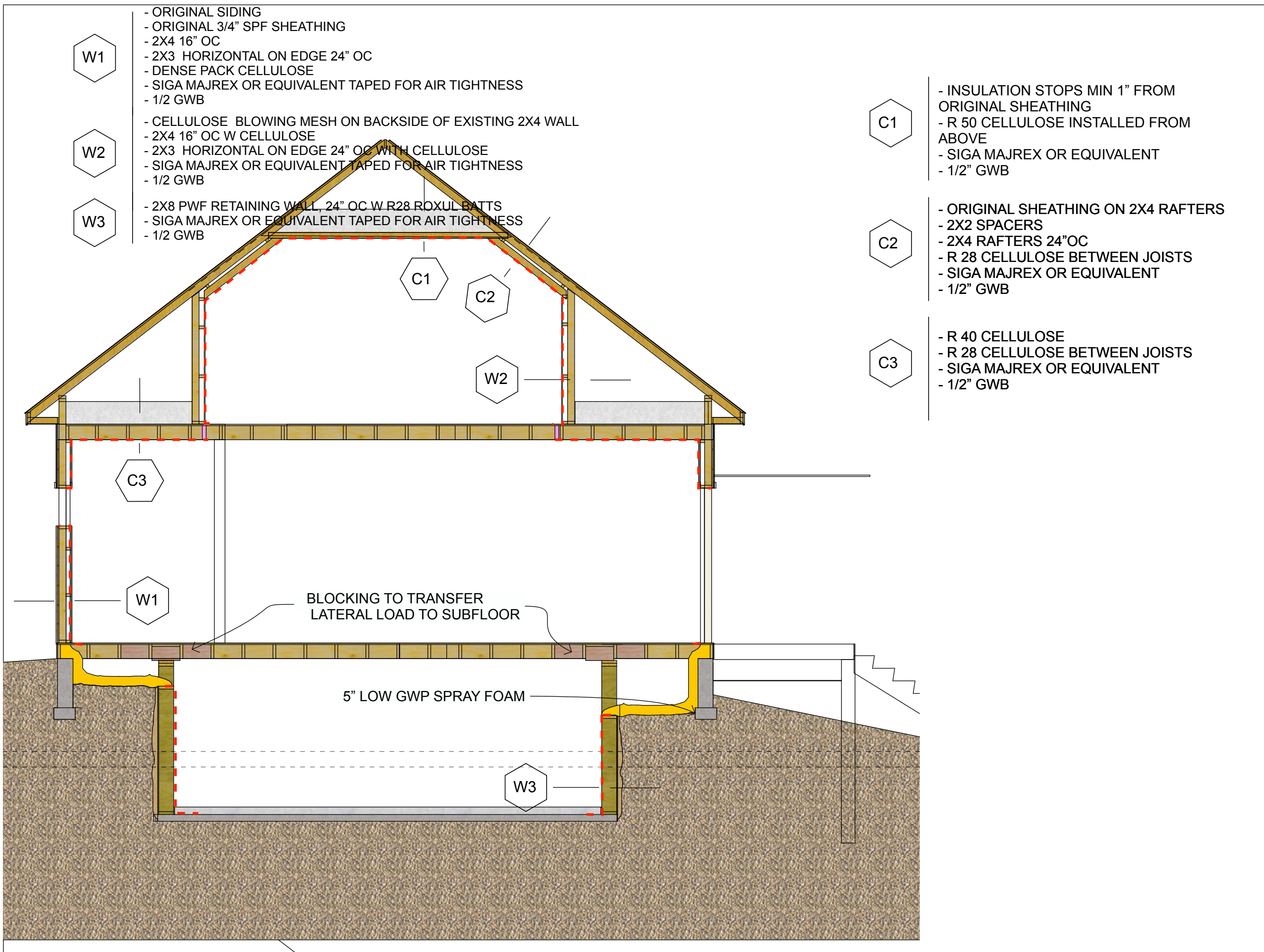
RUTHERFORD
COTTAGE
RESTORATION
AND ADDITION

DATE
February 18, 2023

COTTAGE SECTIONS

DRAWN BY
PA

EAST WEST
SECTION



W1

- ORIGINAL SIDING
- ORIGINAL 3/4" SPF SHEATHING
- 2X4 16" OC
- 2X3 HORIZONTAL ON EDGE 24" OC
- DENSE PACK CELLULOSE
- SIGA MAJREX OR EQUIVALENT TAPED FOR AIR TIGHTNESS
- 1/2" GWB

W2

- CELLULOSE BLOWING MESH ON BACKSIDE OF EXISTING 2X4 WALL
- 2X4 16" OC W CELLULOSE
- 2X3 HORIZONTAL ON EDGE 24" OC WITH CELLULOSE
- SIGA MAJREX OR EQUIVALENT TAPED FOR AIR TIGHTNESS
- 1/2" GWB

W3

- 2X8 PWF RETAINING WALL, 24" OC W R28 ROXUL BATT
- SIGA MAJREX OR EQUIVALENT TAPED FOR AIR TIGHTNESS
- 1/2" GWB

C1

- INSULATION STOPS MIN 1" FROM ORIGINAL SHEATHING
- R 50 CELLULOSE INSTALLED FROM ABOVE
- SIGA MAJREX OR EQUIVALENT
- 1/2" GWB

C2

- ORIGINAL SHEATHING ON 2X4 RAFTERS
- 2X2 SPACERS
- 2X4 RAFTERS 24"OC
- R 28 CELLULOSE BETWEEN JOISTS
- SIGA MAJREX OR EQUIVALENT
- 1/2" GWB

C3

- R 40 CELLULOSE
- R 28 CELLULOSE BETWEEN JOISTS
- SIGA MAJREX OR EQUIVALENT
- 1/2" GWB

BLOCKING TO TRANSFER LATERAL LOAD TO SUBFLOOR

5" LOW GWP SPRAY FOAM

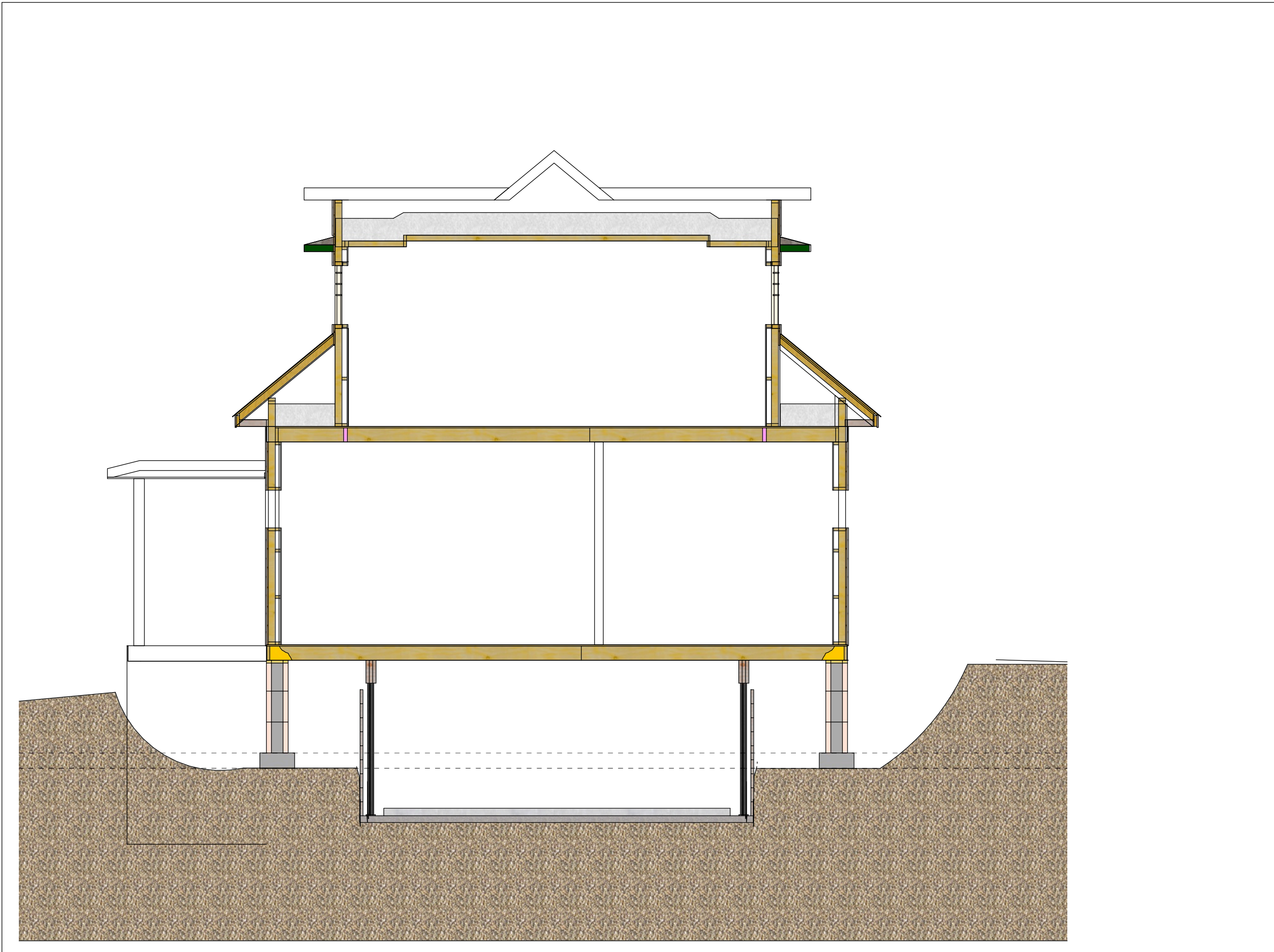
RUTHERFORD
COTTAGE
RESTORATION
AND ADDITION

DATE
February 18, 2023

COTTAGE SECTIONS

DRAWN BY
PA

NORTH SOUTH
SECTION



RUTHERFORD
COTTAGE
RESTORATION
AND ADDITION

DATE
February 18, 2023

COTTAGE SECTIONS

DRAWN BY
PA

ALTERNATE
FOUNDATION N/
SECTION



RUTHERFORD
COTTAGE
RESTORATION
AND ADDITION

DATE
February 18, 2023

COTTAGE SECTIONS

DRAWN BY
PA

PHOTOS OF
EXISTING
